

LASER PEGS®

The Ultimate Construction Toy For Kids®

CI400

FORKLIFT

Ages 5+

30 IN 1

Requires 3 AAA Batteries

Batteries NOT Included



EN71, RoHS COMPLIANT



This product complies to all safety requirements of ASTM F 963

MODEL INSTRUCTIONS

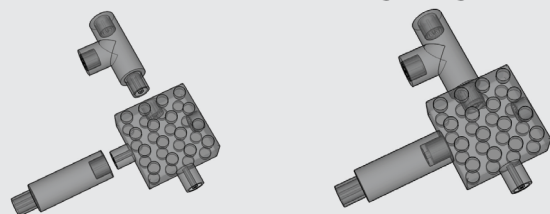
All additional model instructions can be downloaded at www.LaserPegs.com

Please read this manual before you begin! Failure to follow this manual's instructions may result in damage to the Power Base and/or Laser Pegs®. Not adhering to these instructions will void the manufacturer's warranty. The packaging must be kept because it contains important information.

WARNING: CHOKING HAZARD-Small parts. Not for children under 3 yrs. Do not submerge in water.

DO NOT SUBMERGE IN WATER

Connecting Pegs



To construct with Laser Pegs®, slide two pieces together to form a connection. Slide each piece on and off smoothly.

POWER BLOCK

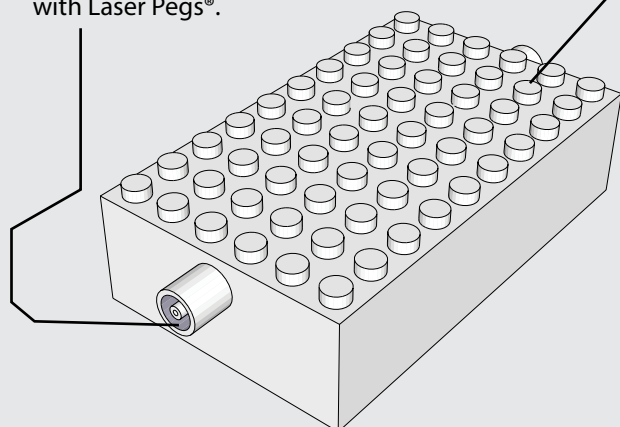
The Power Block is a Power Base that allows you to build with Laser Pegs® and construction parts to build models that light up. It is battery operated. (BATTERIES NOT INCLUDED.)

Laser Pegs® Connections

Allows you to construct with Laser Pegs®.

Construction Part Connections

Allows you to connect to other construction kits.

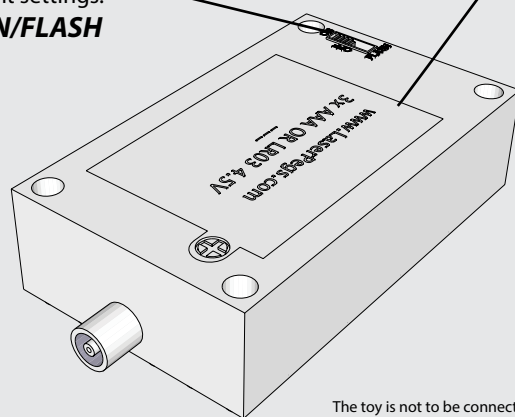


Power Switch

Move the Power Switch to cycle through the Power Block light settings.
OFF/ON/FLASH

Battery Compartment

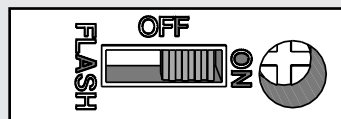
Requires 3-AAA Batteries (Batteries Not Included)



The toy is not to be connected to more than the recommended number of power supplies

LIGHT SETTINGS

OFF - Turns lights OFF
ON - Turns lights ON
FLASH - Makes lights FLASH



WARNING: STROBE LIGHTS MAY CAUSE SEIZURES

WARNING! Each Laser Peg® draws current from the batteries. Therefore, the more pegs you use, the quicker you will deplete your battery power! As the power weakens, the current will slowly fail and some Laser Pegs® will illuminate (typically the reds and yellows) and some won't. When the Laser Pegs® dim, the Laser Pegs® are not broken, they just need stronger batteries. You have 2 simple options...

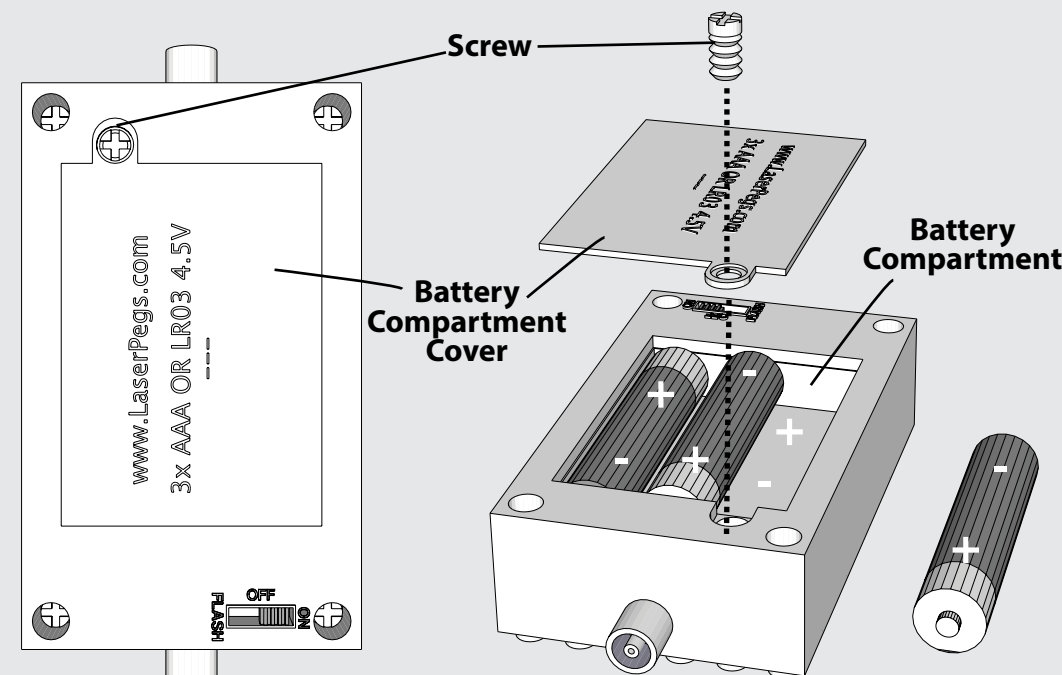
1. Change the batteries.
2. Use high quality batteries. They will last a little longer, but they will still deplete rapidly the more Laser Pegs® you connect!

Replacing Batteries

1. Remove Screw.
2. Lift off Battery Compartment Cover.
3. Place three (3) AAA batteries in the correct position - as displayed inside of the Power Block.
4. Replace Battery Compartment Cover and Screw.
5. Slide Power Switch setting to OFF/ON/FLASH.
6. Do not mix old and new batteries.
7. Do not mix alkaline, standard (carbon-zinc), or rechargeable (nickel-cadmium, NiMH) batteries!
8. Exhausted batteries are to be removed from the power base.
9. Never connect more than 30 Laser Pegs® at one time!
10. Non-rechargeable batteries are not to be recharged.
11. Rechargeable batteries are only to be recharged under adult supervision.
12. Rechargeable batteries are to be removed from the toy before being recharged.
13. Batteries are to be inserted with the correct polarity.
14. The supply terminals are not to be short-circuited.
15. DO NOT THROW BATTERIES INTO FIRE!

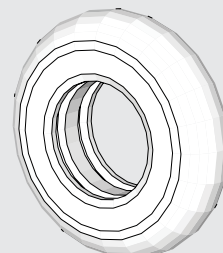
Remove the Phillips head screw with a 4mm screw driver.

Requires 3-AAA Batteries
Batteries NOT Included

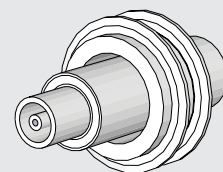


Requires 3-AAA Batteries

Connecting the Laser Pegs® Tire to the Axle Peg

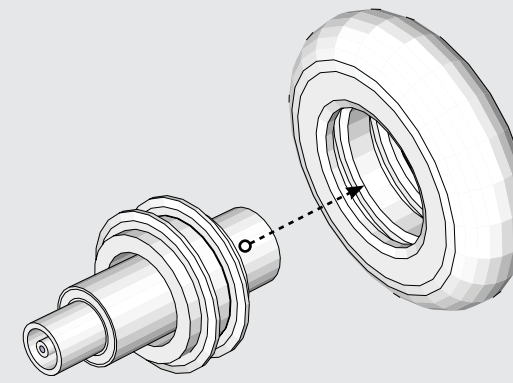


Tire

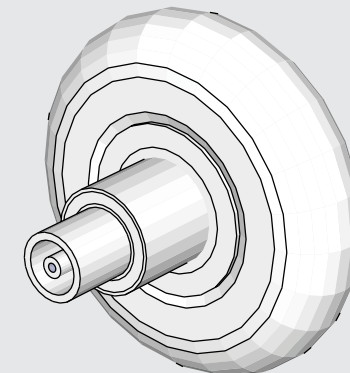


Axle Peg

Place Axle Peg through the Tire



Tire Peg

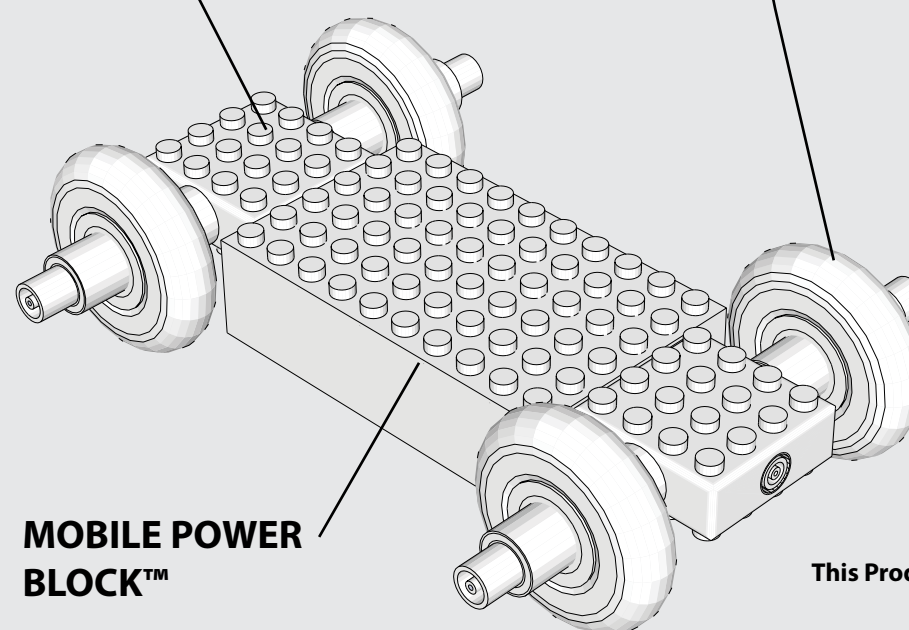


POWER BLOCK™

Use the Laser Pegs® Square M-M Peg to attach the Tire Pegs to the Power Block™.

Laser Pegs® Square M-M Peg

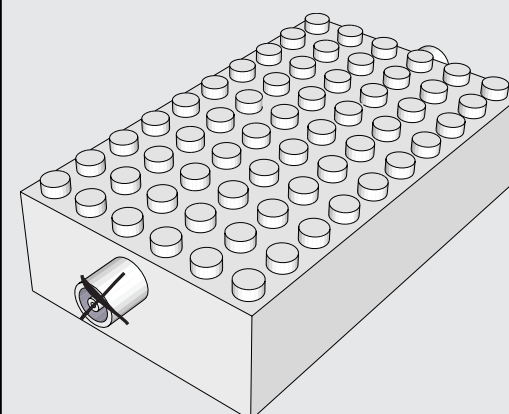
Tire Peg



MOBILE POWER BLOCK™

AVOID DAMAGE TO PEG HOLES

*To avoid short-circuits, keep metal objects and other unauthorized materials from obstructing the peg holes.



Never connect more than 30 Laser Pegs® to the Power Block at one time.

This Product contains a button battery. If swallowed, it could cause severe injury or death in just 2 hours. Seek medical attention immediately.

www.LaserPegs.com

This manual is copyright and cannot be reproduced or used online without Laser Pegs® Ventures LLC permission. Copyright 2015 © All Rights Reserved US Patent #8,864,546 Additional Global & Multiple Patents Pending. Laser Pegs® Ventures LLC. 8304 Consumer Ct., Sarasota FL 34240. Contact: Support@LaserPegs.com

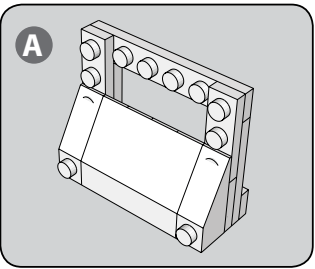
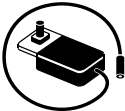
FORKLIFT: Also called a lift truck, or a fork truck, a forklift is a powered industrial truck used to lift and move materials short distances.



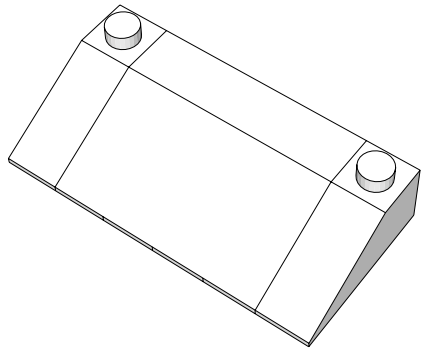
FORKLIFT

Model Difficulty Level
3

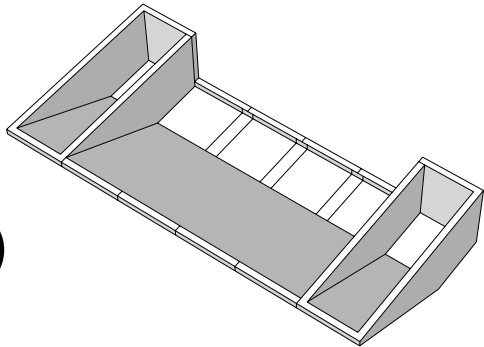
The TRY-ME mechanism is for display purposes ONLY and should be discarded as per state and local regulations. It is NOT intended to be used for the building of this model.



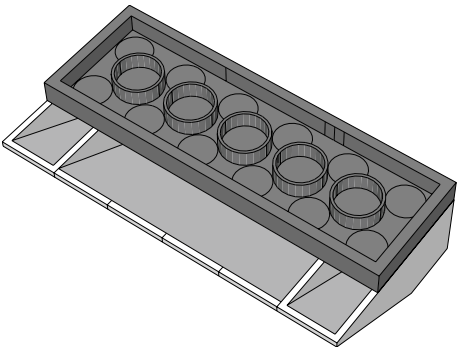
STEP 1



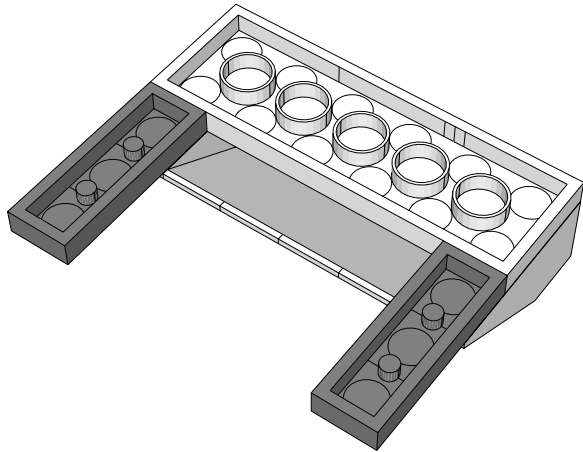
STEP 2



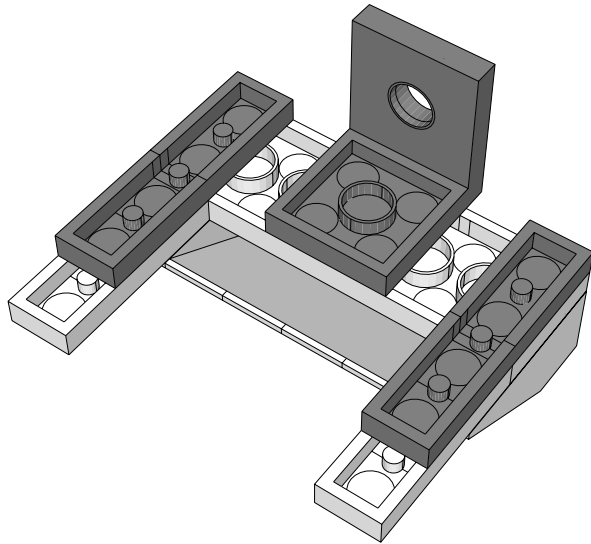
STEP 3



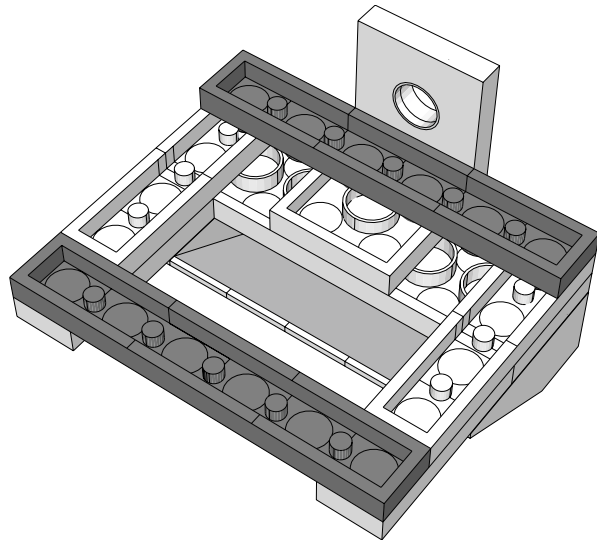
STEP 4



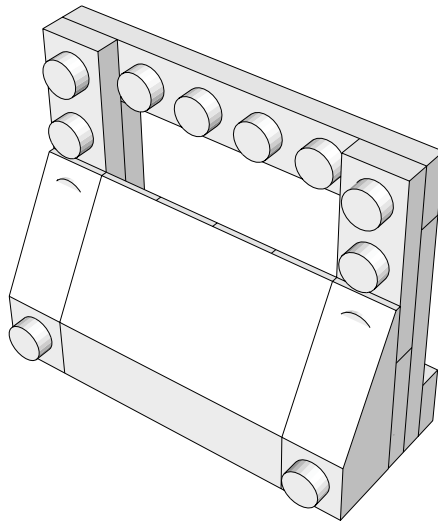
STEP 5



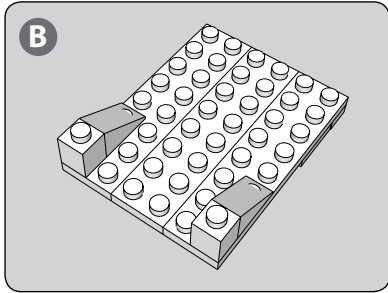
STEP 6



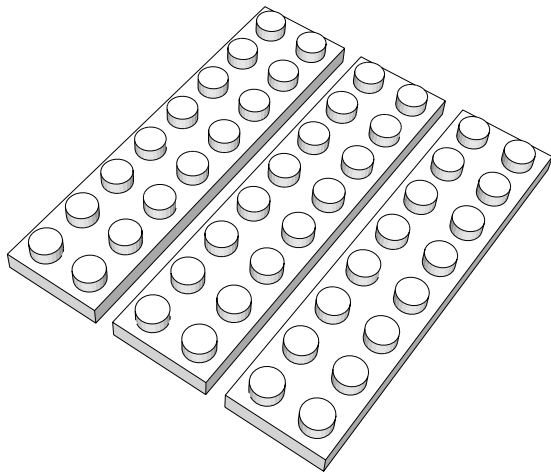
STEP 7



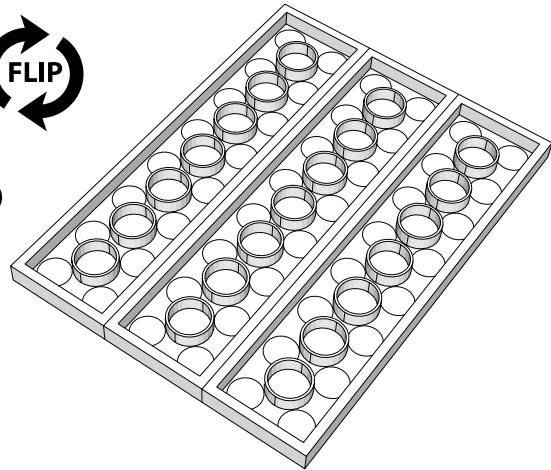
B



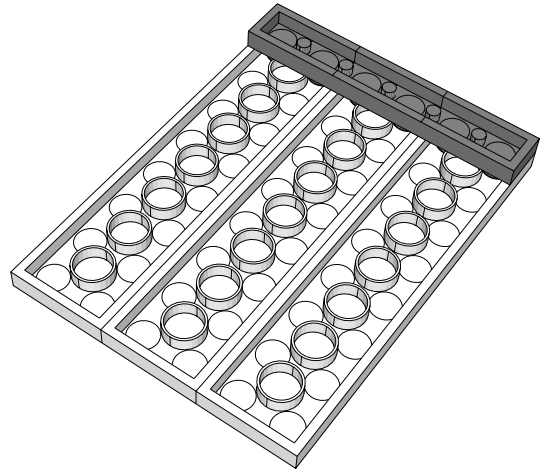
STEP 8



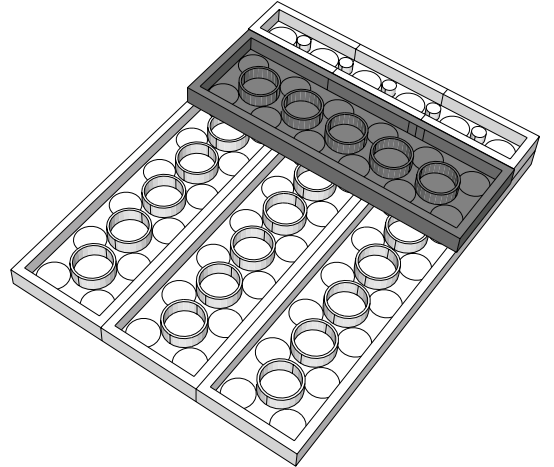
STEP 9



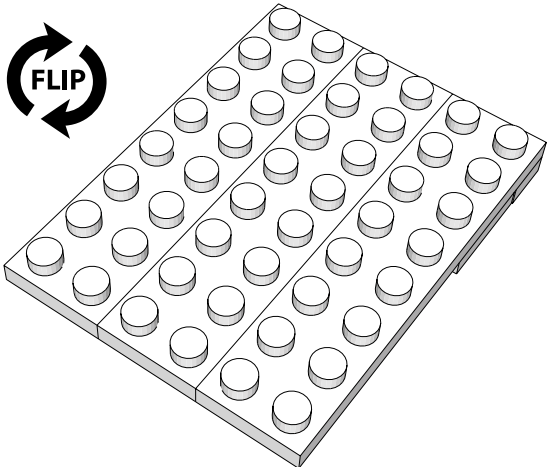
STEP 10



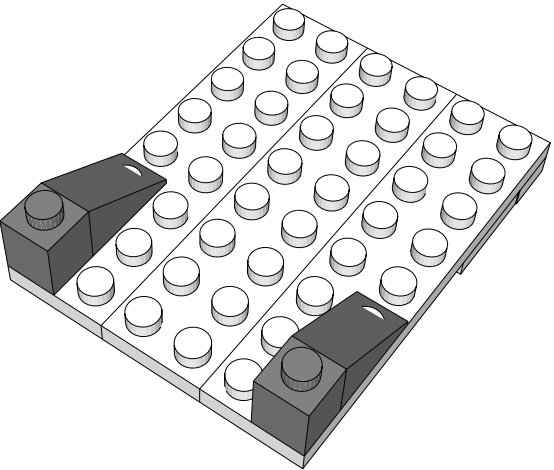
STEP 11

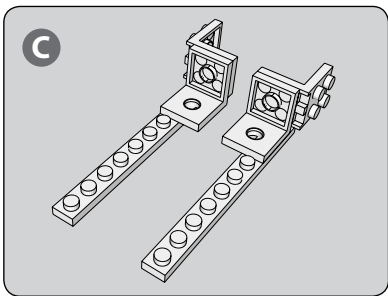


STEP 12

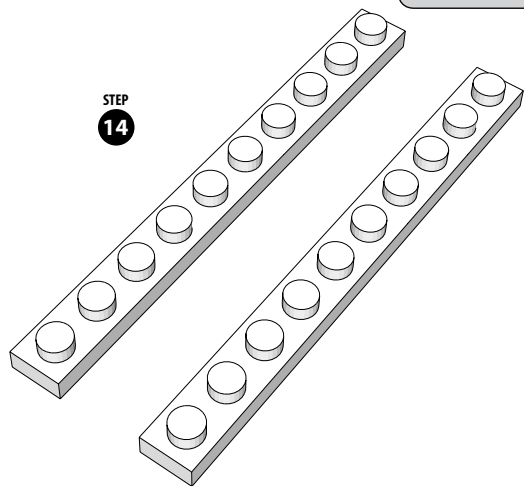


STEP 13

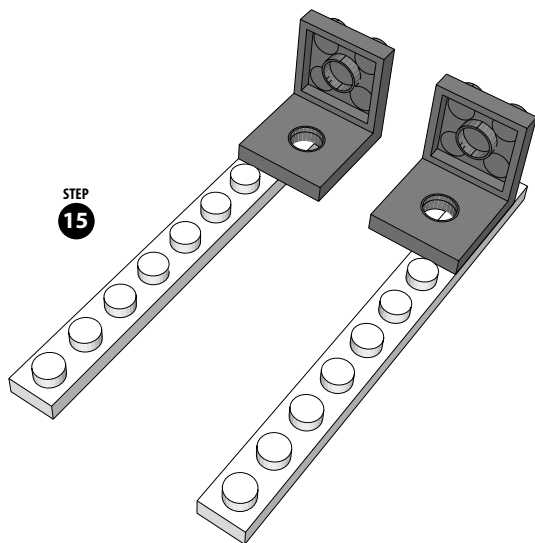




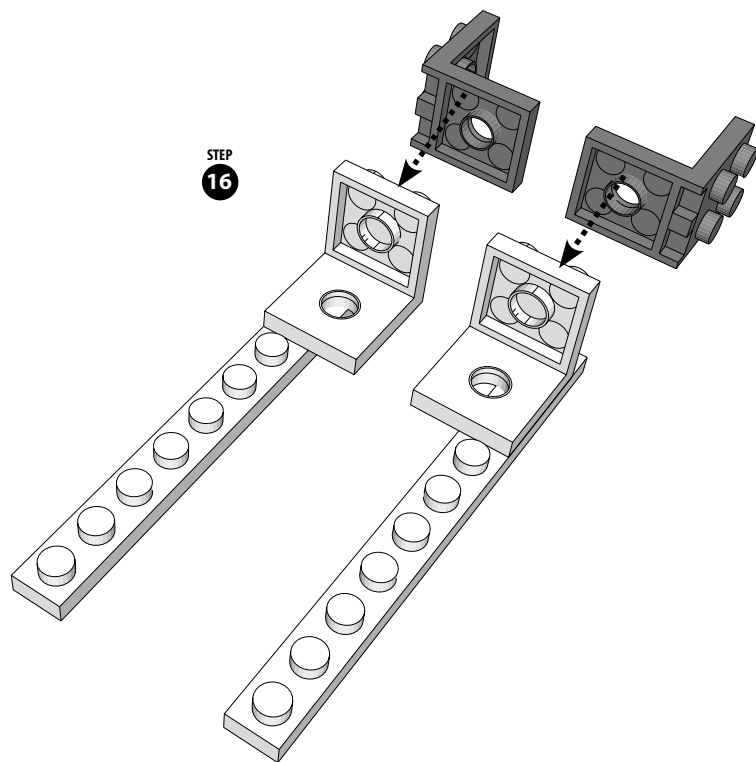
STEP
14



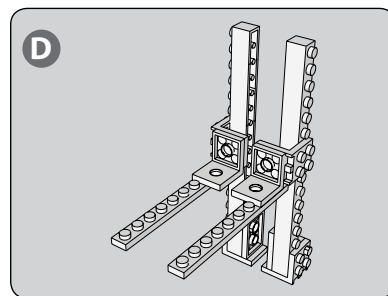
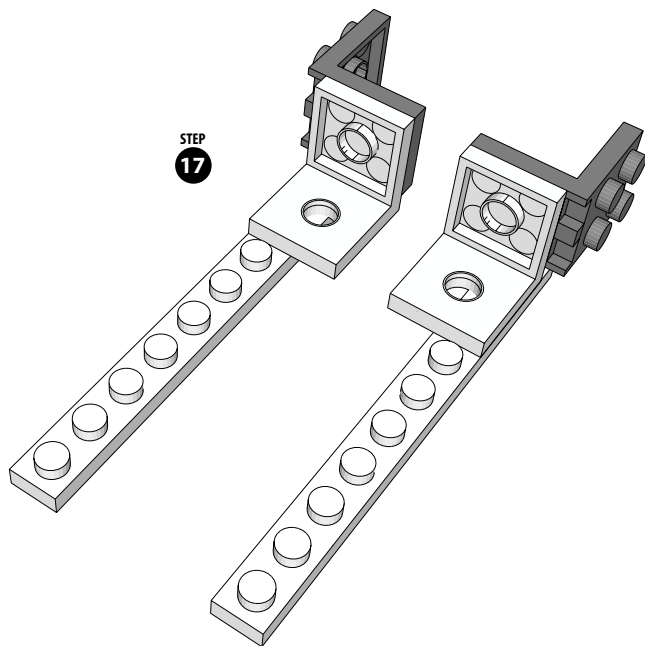
STEP
15



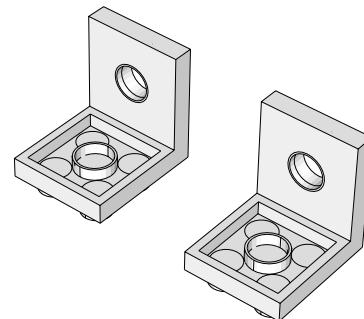
STEP
16



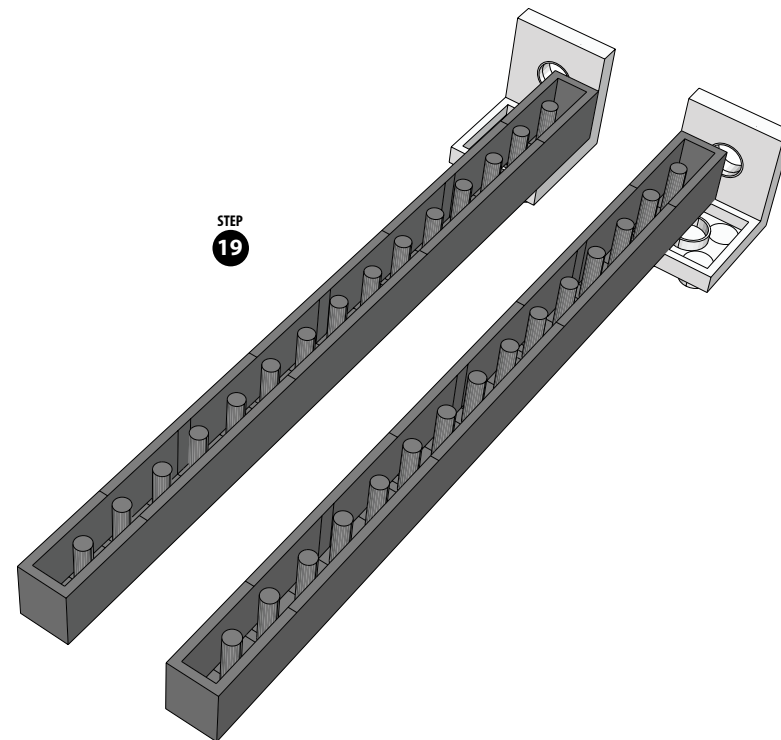
STEP
17



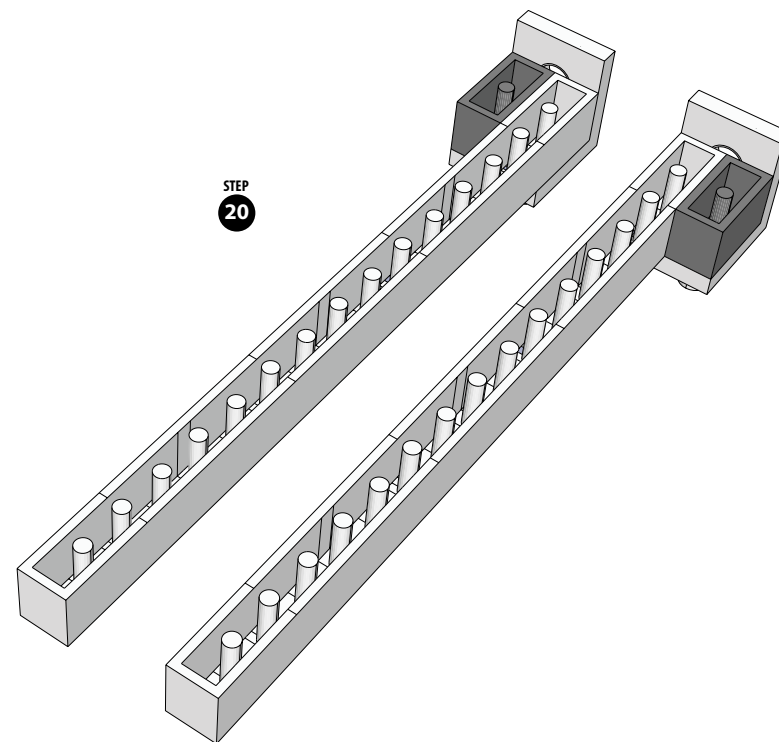
STEP
18



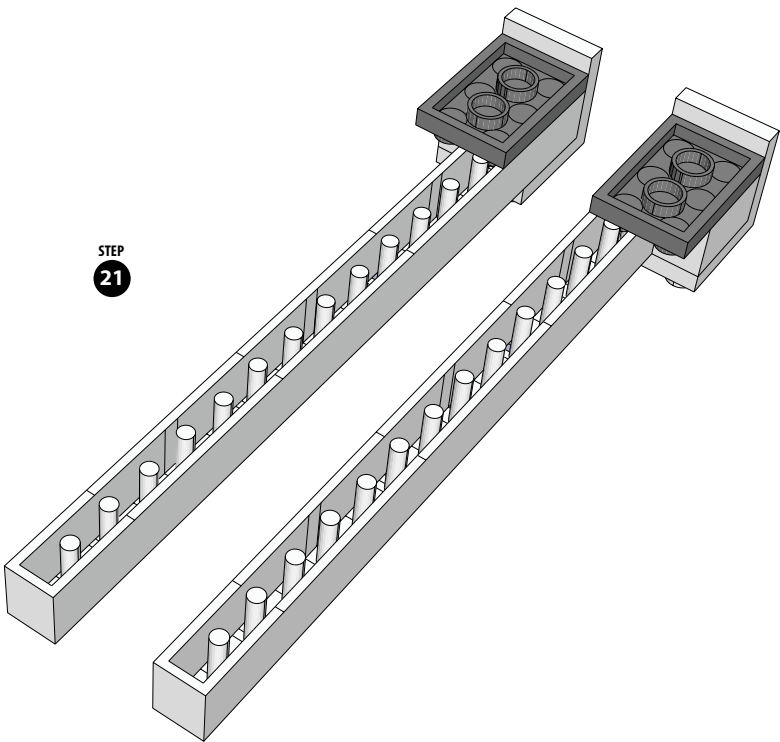
STEP
19



STEP
20

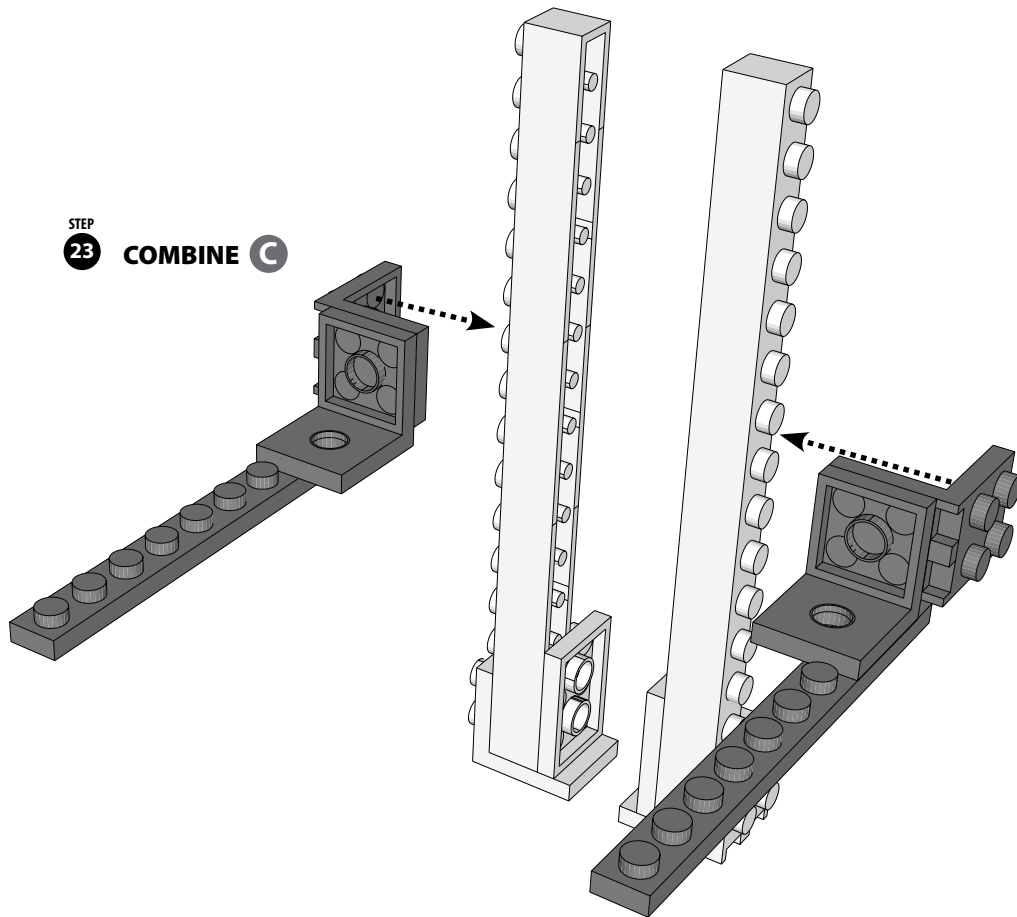


STEP
21

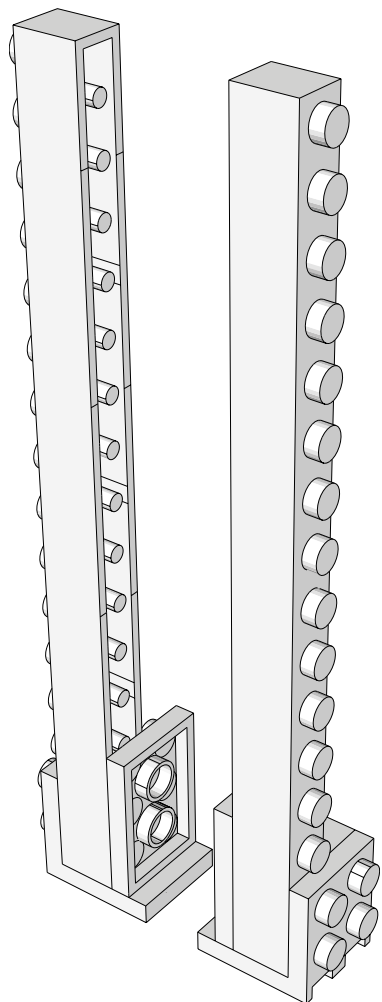


STEP
23

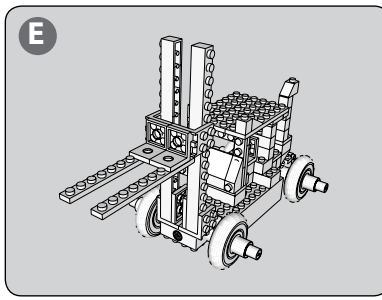
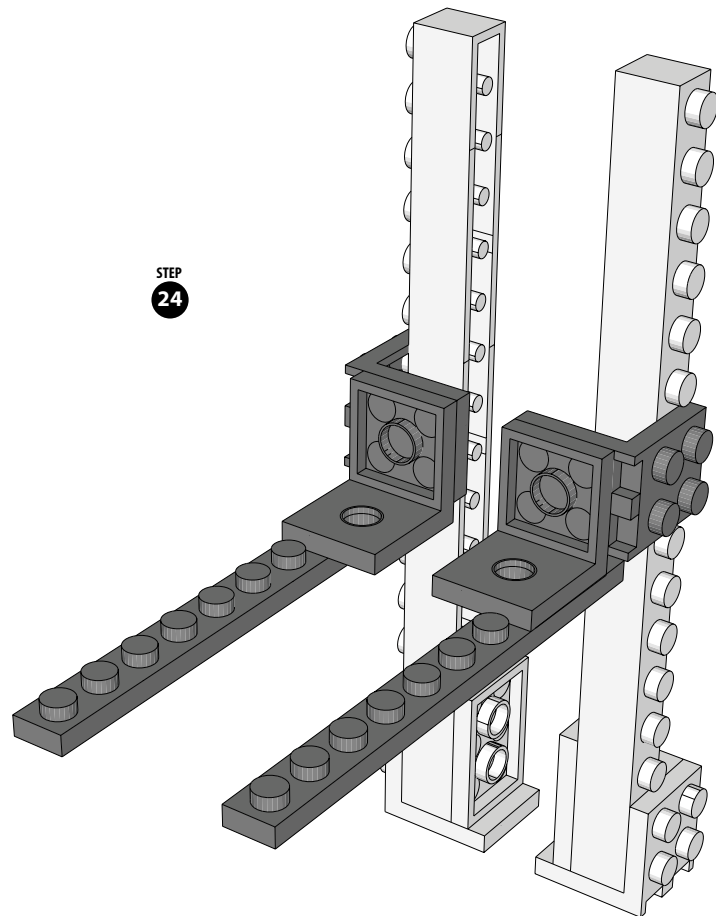
COMBINE C



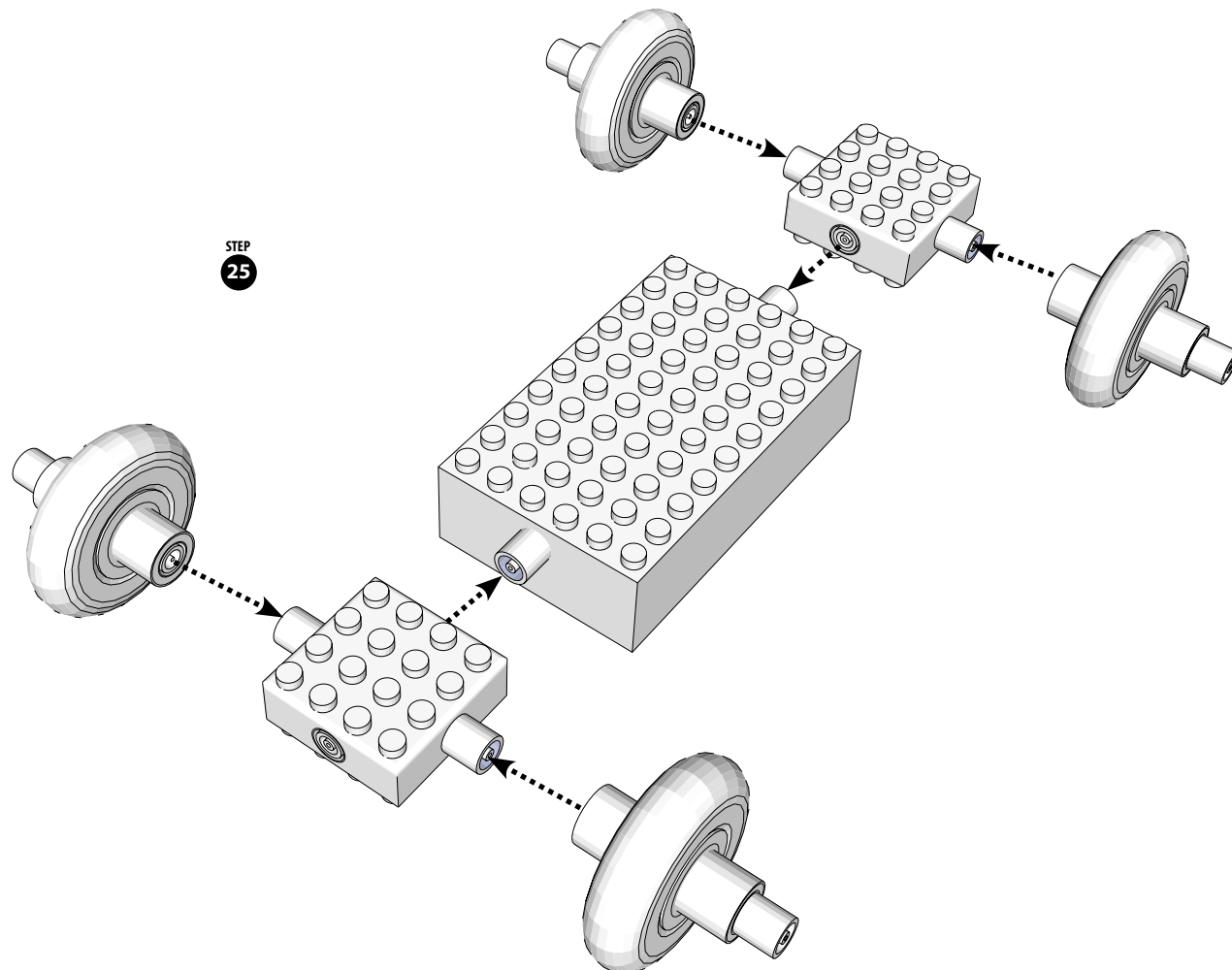
STEP
22



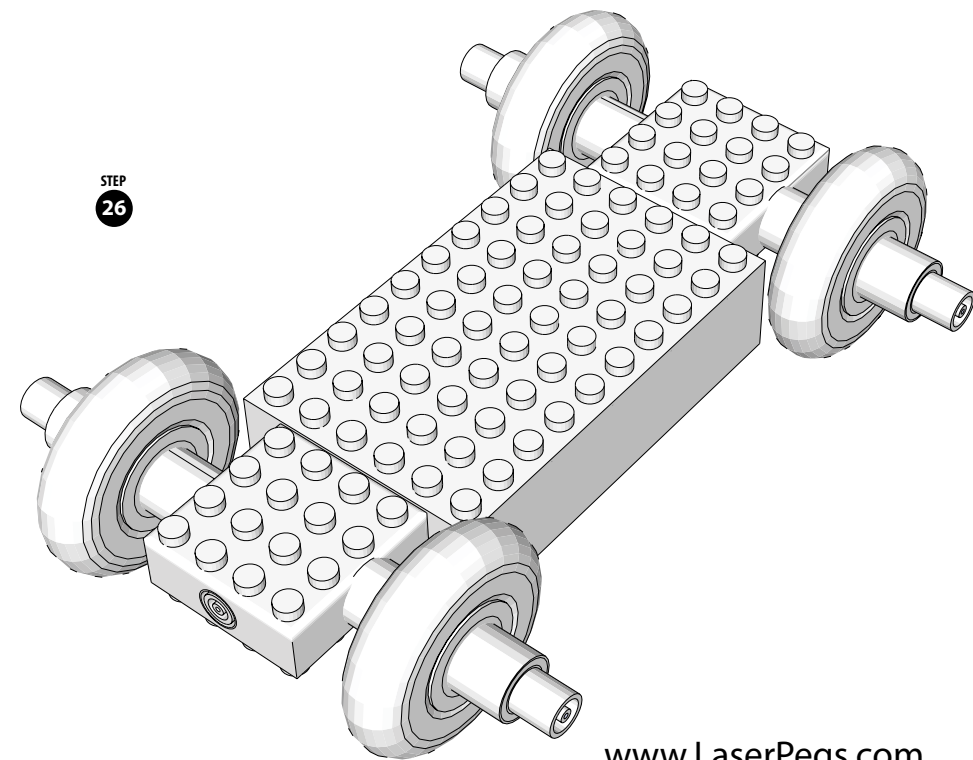
STEP
24



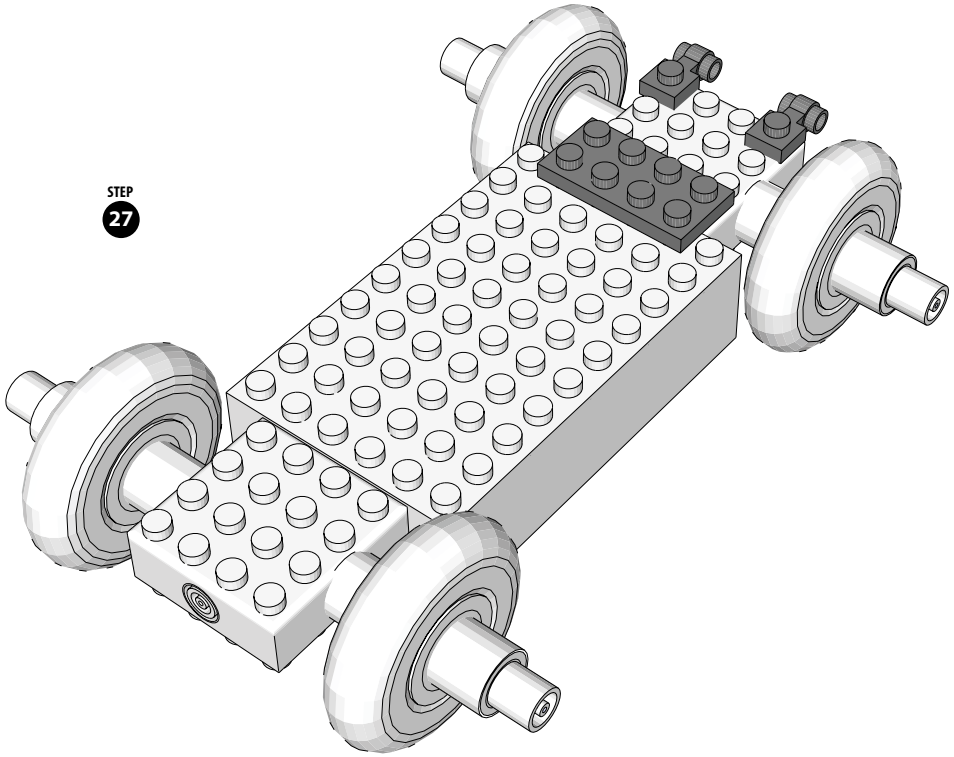
STEP
25



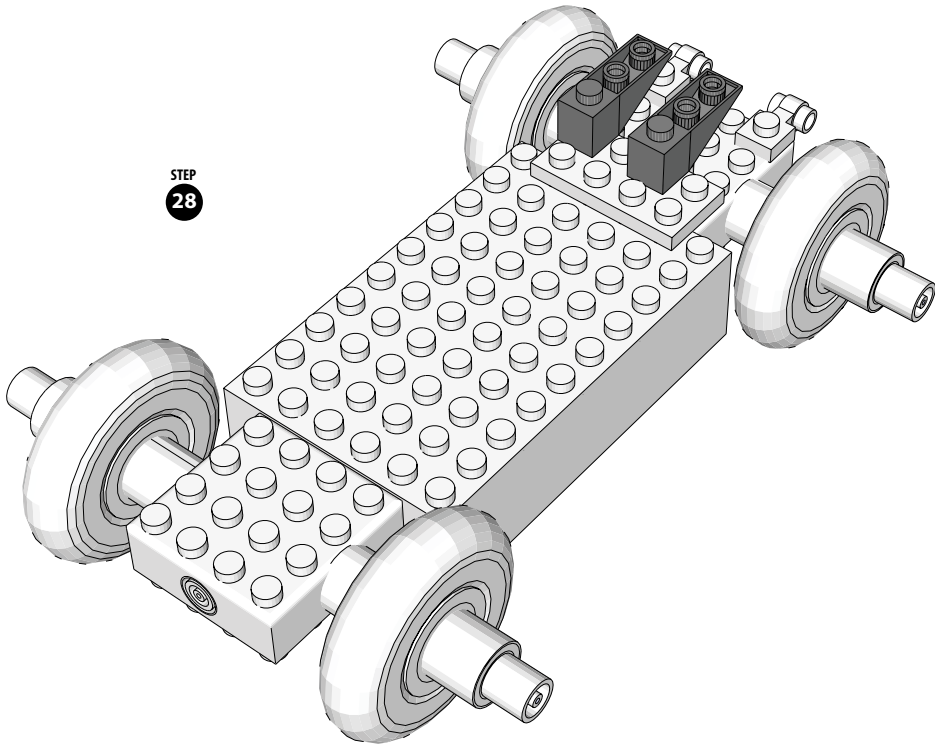
STEP
26



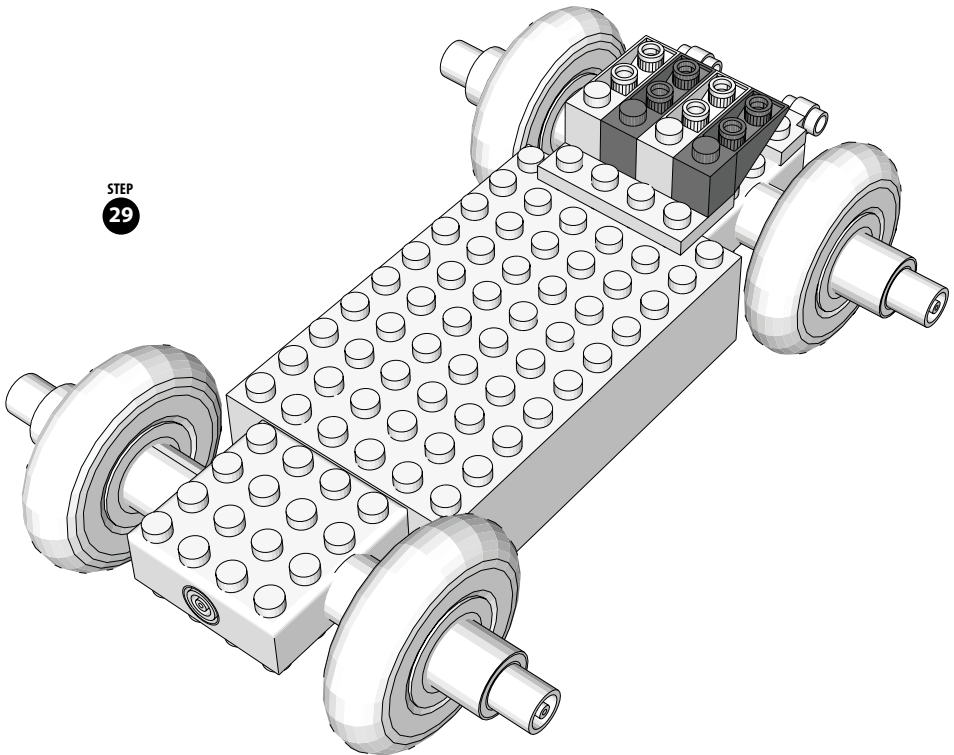
STEP
27



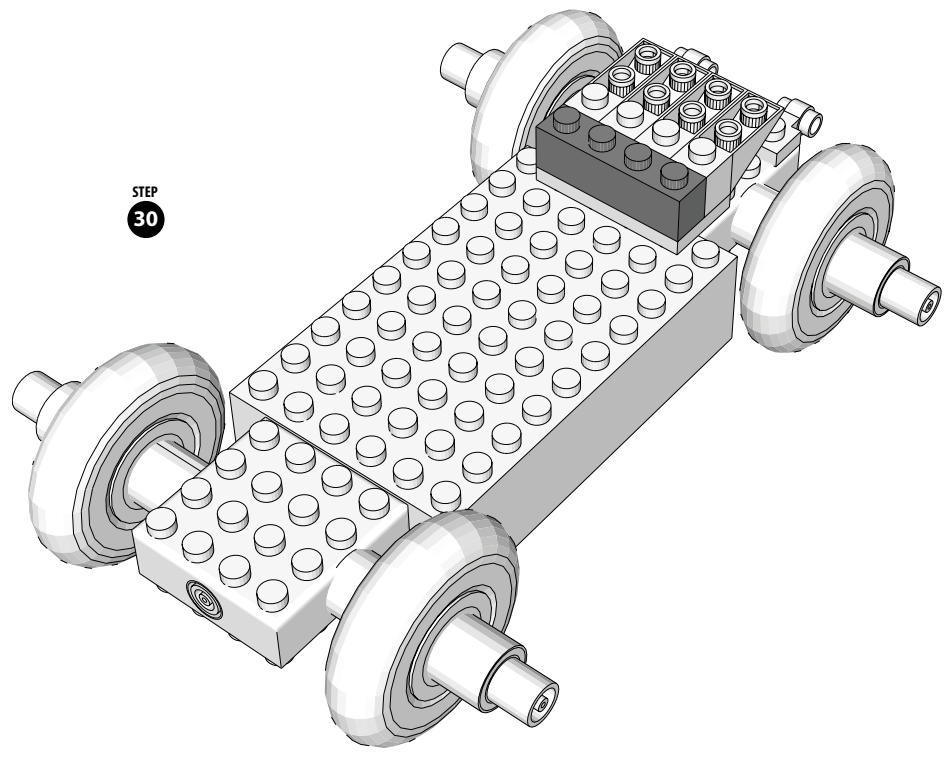
STEP
28



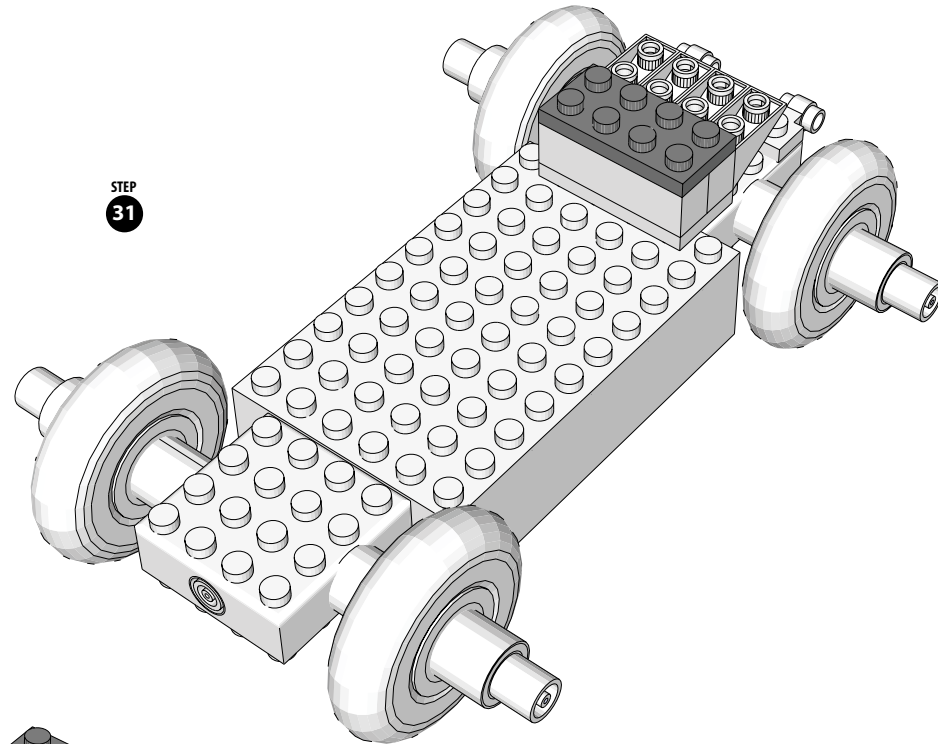
STEP
29



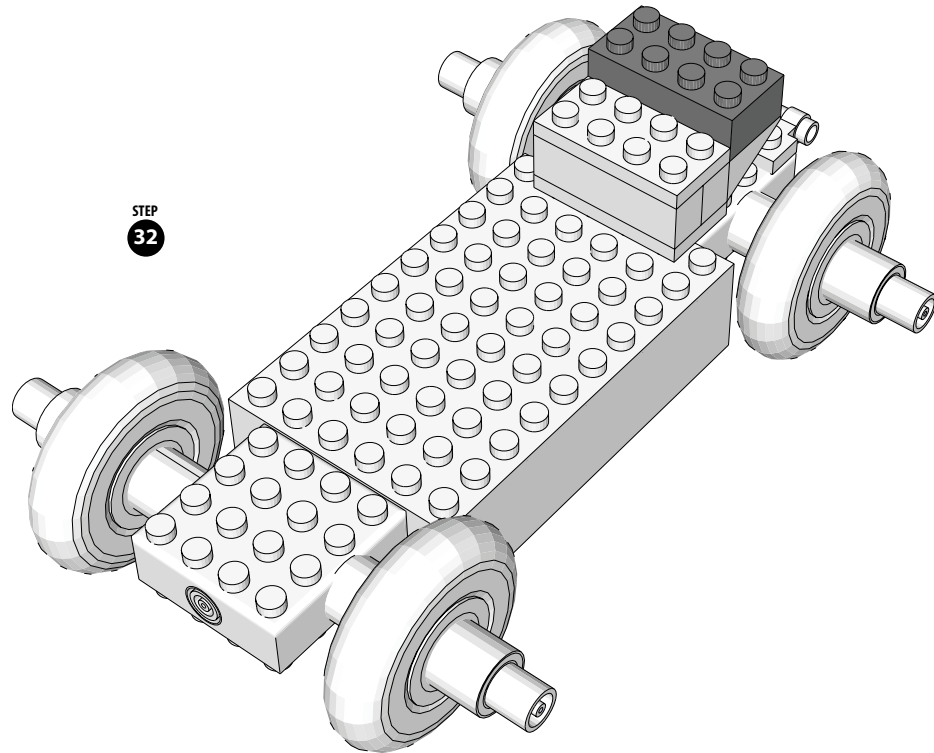
STEP
30



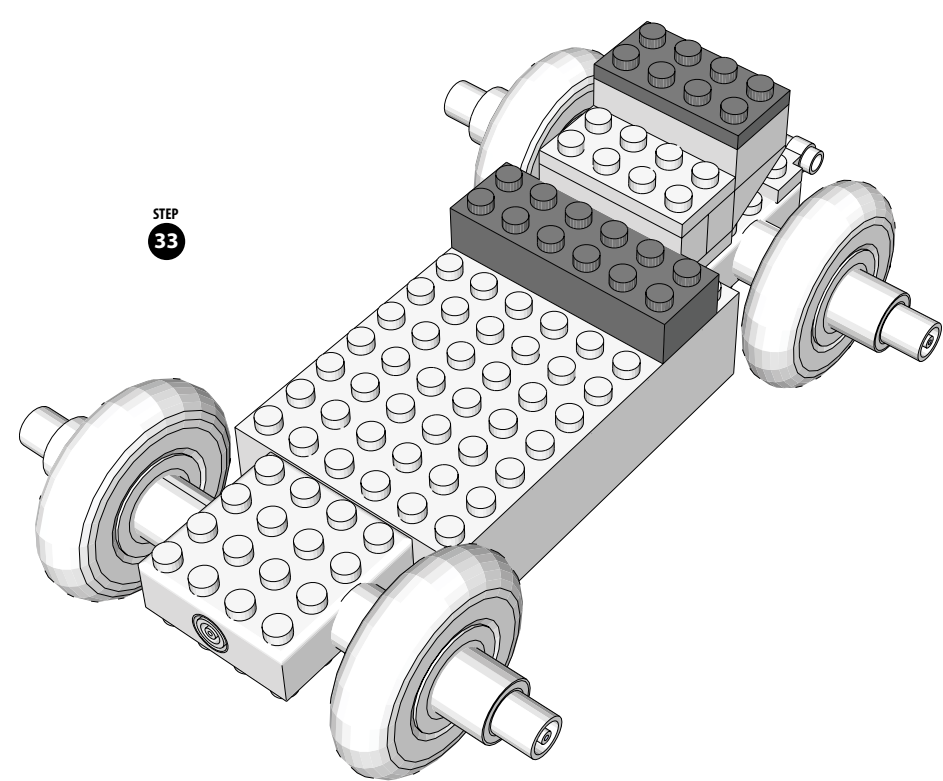
STEP
31



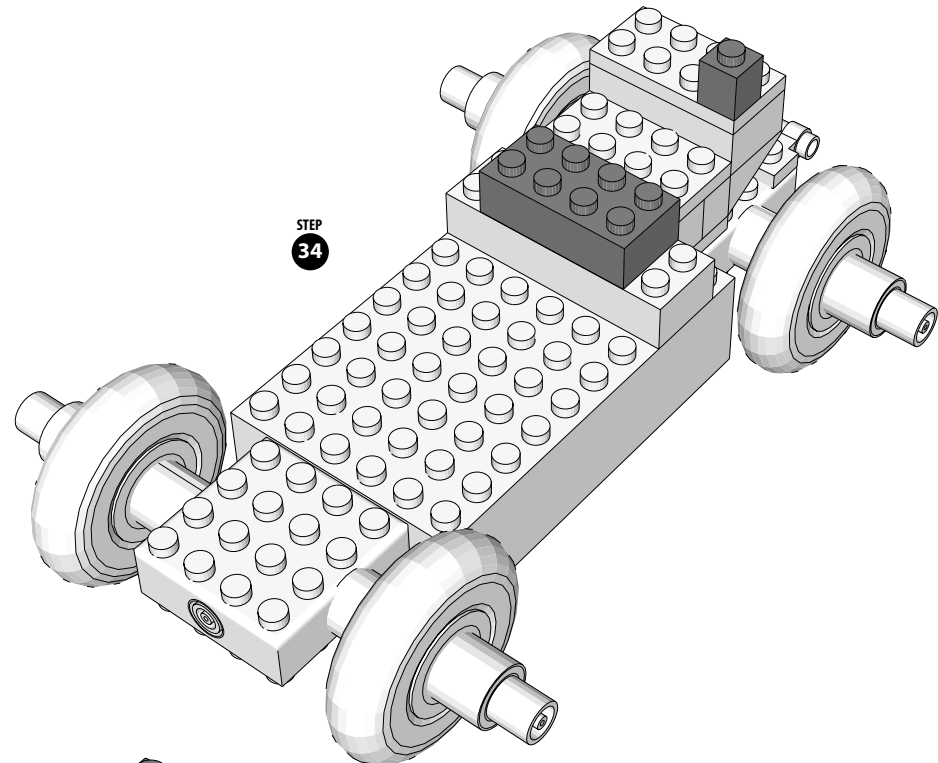
STEP
32



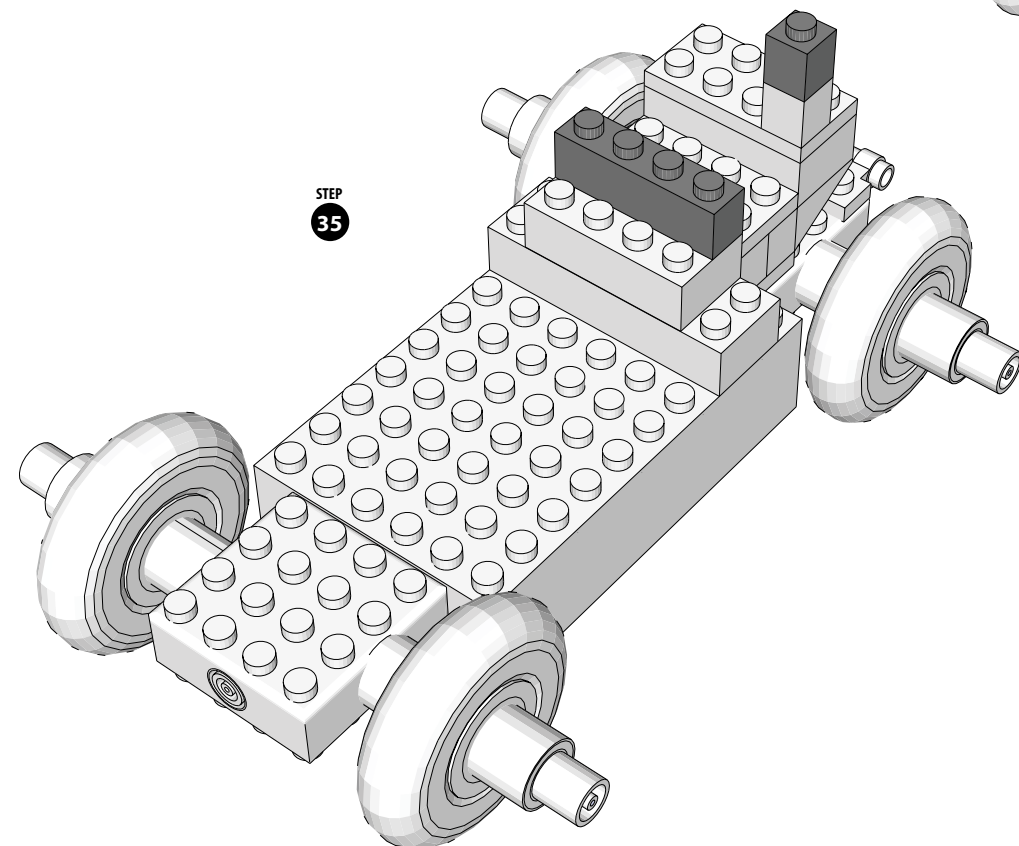
STEP
33



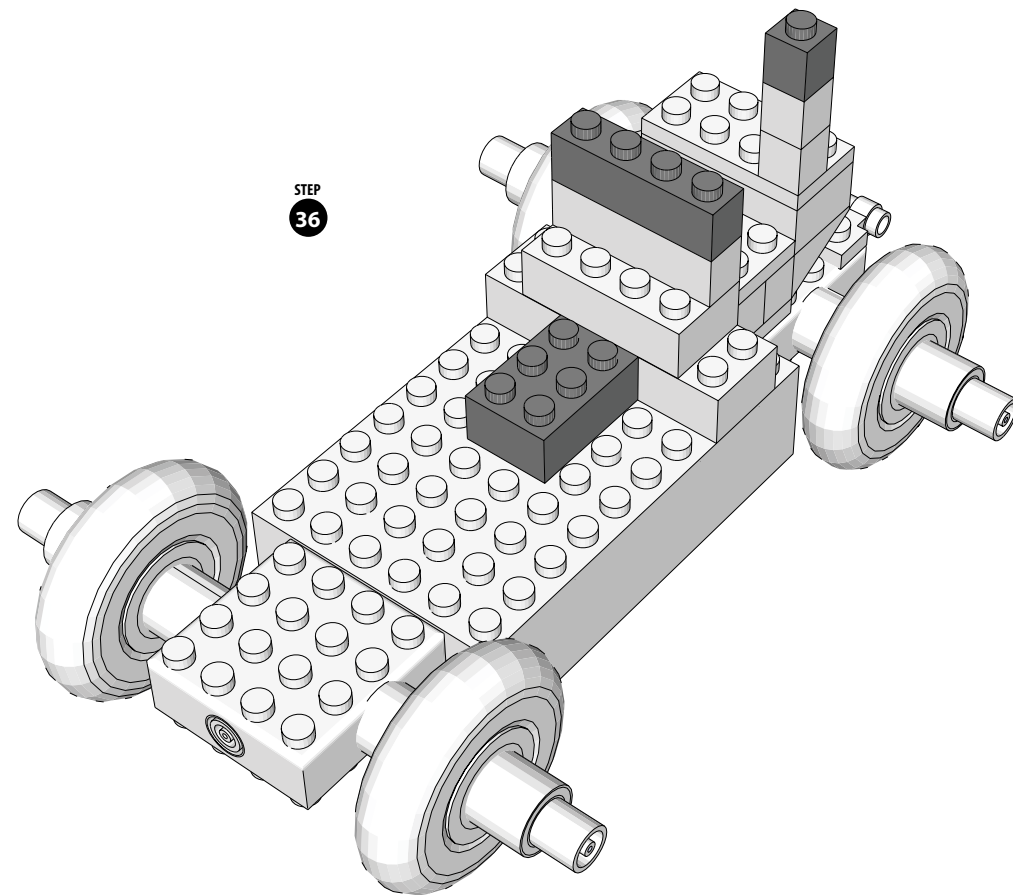
STEP
34



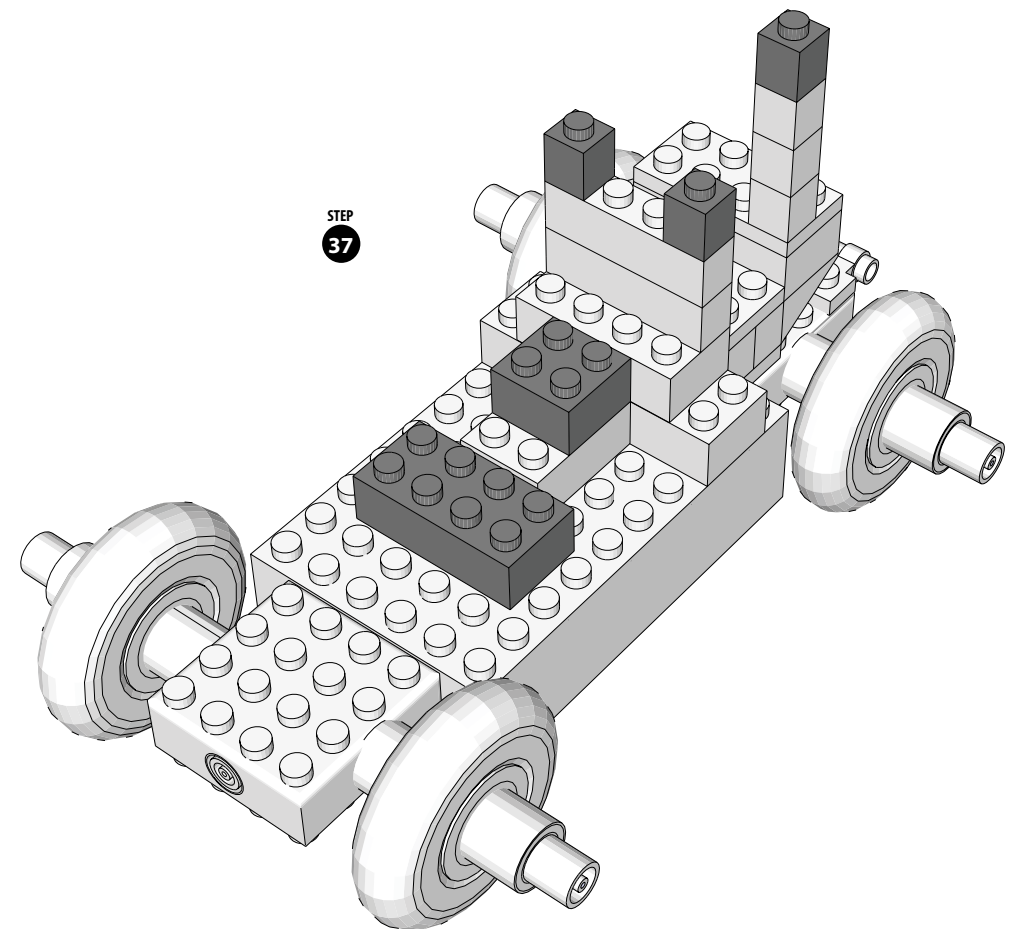
STEP
35



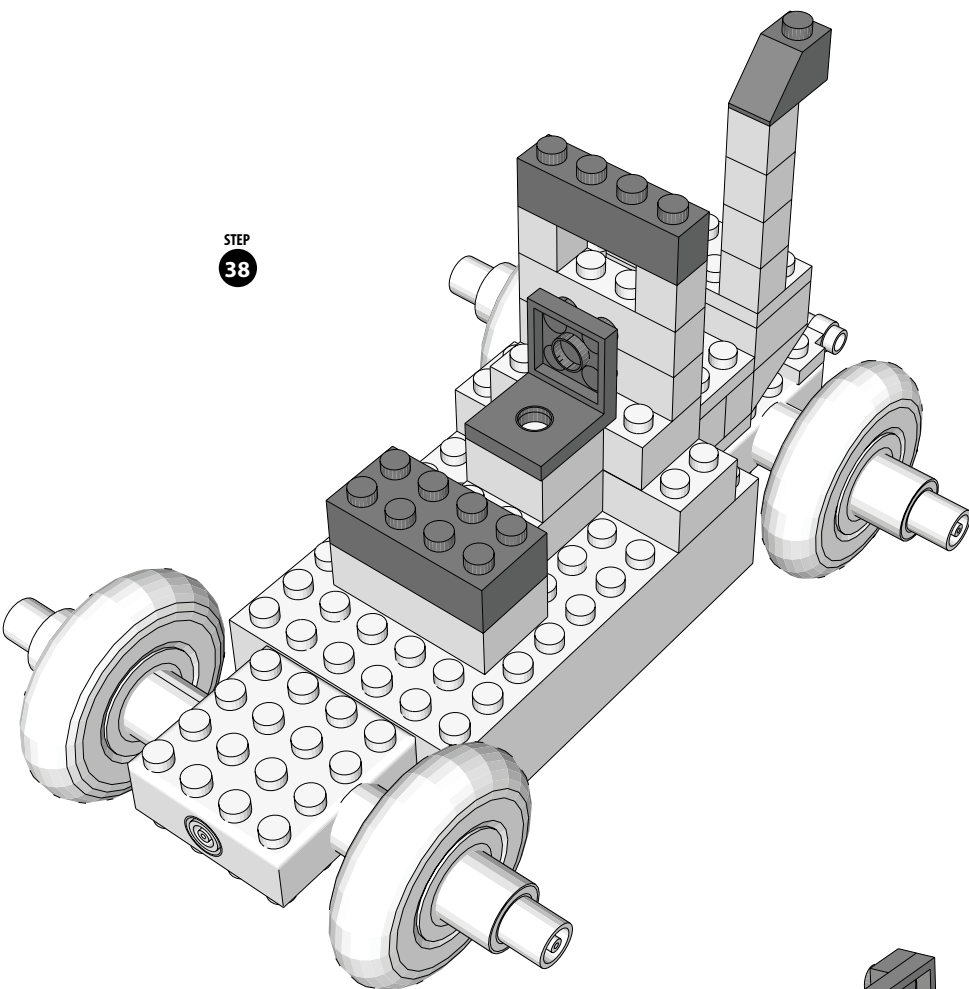
STEP
36



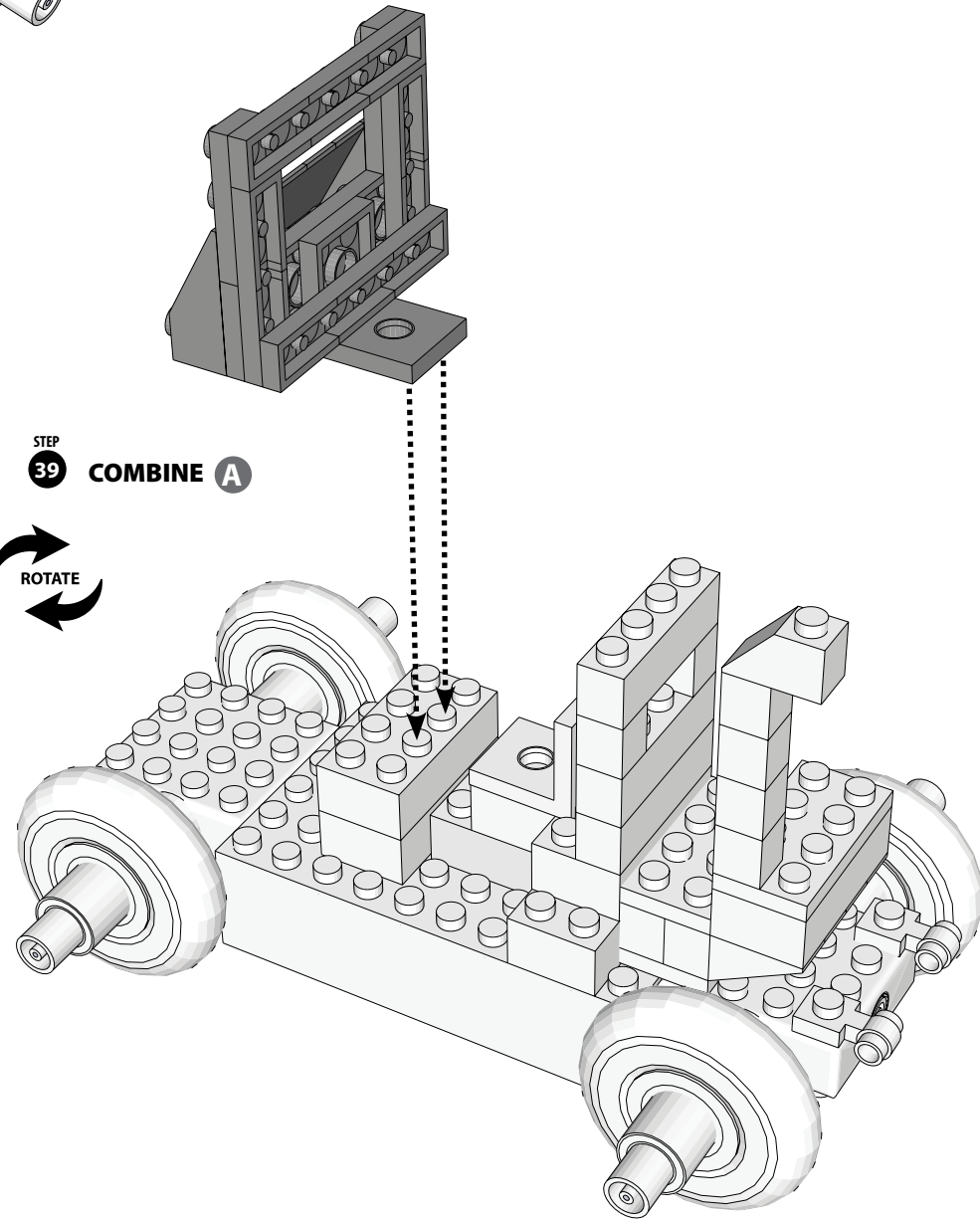
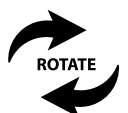
STEP
37



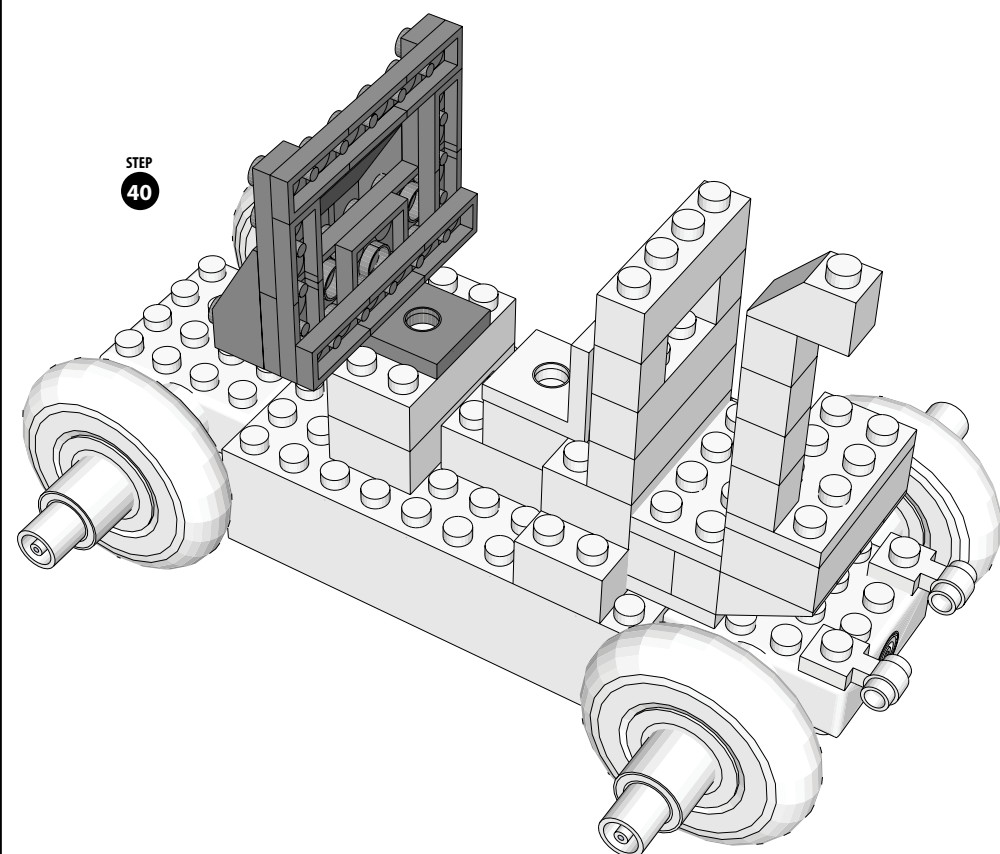
STEP
38



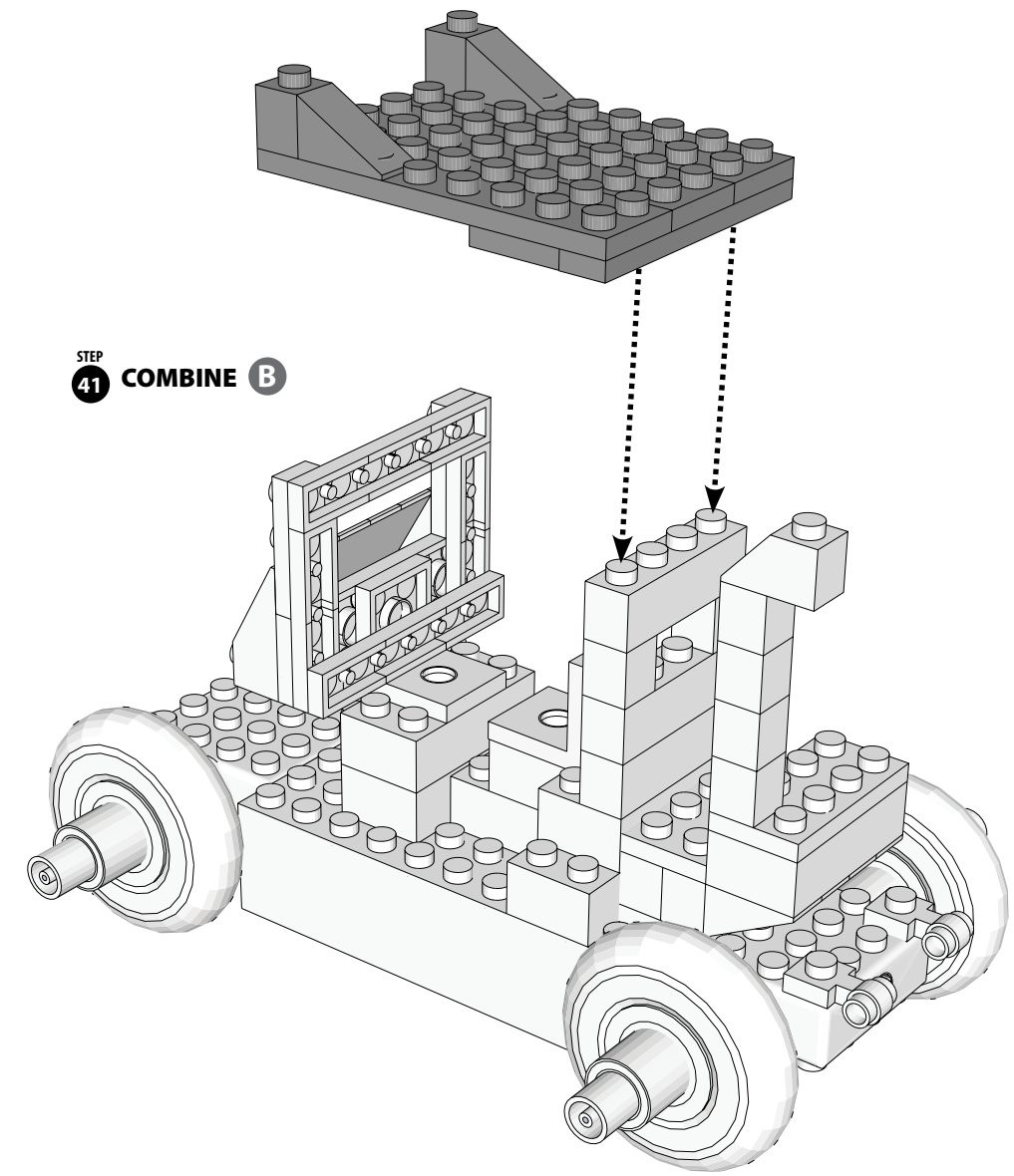
STEP
39 COMBINE A



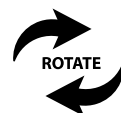
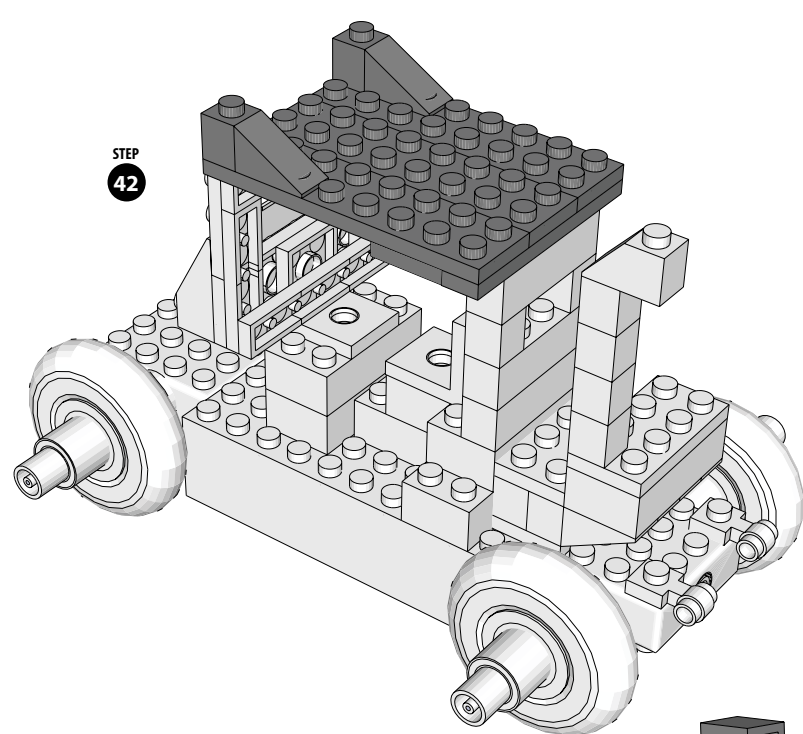
STEP
40



STEP
41 COMBINE B



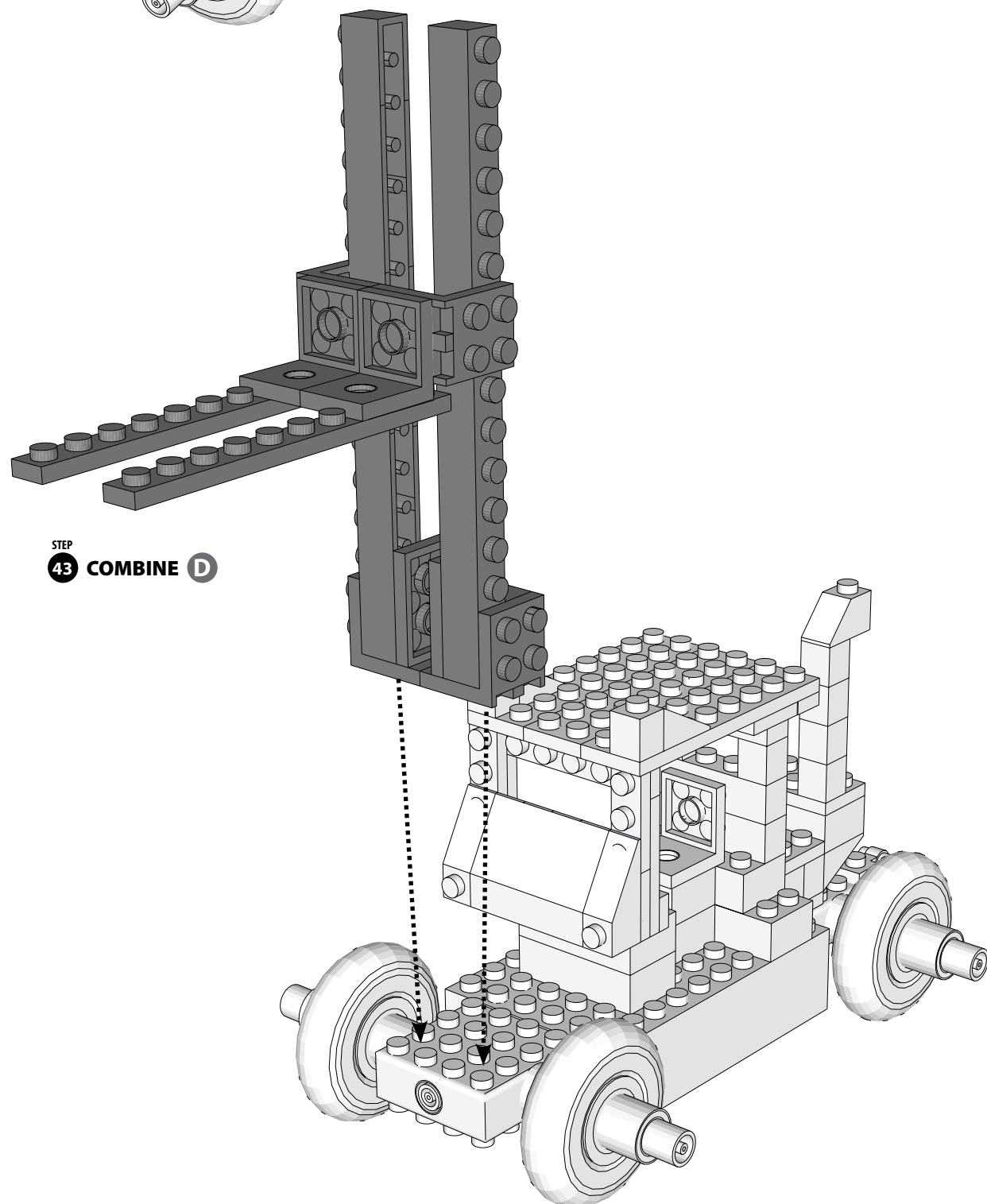
STEP
42



STEP

43

COMBINE D

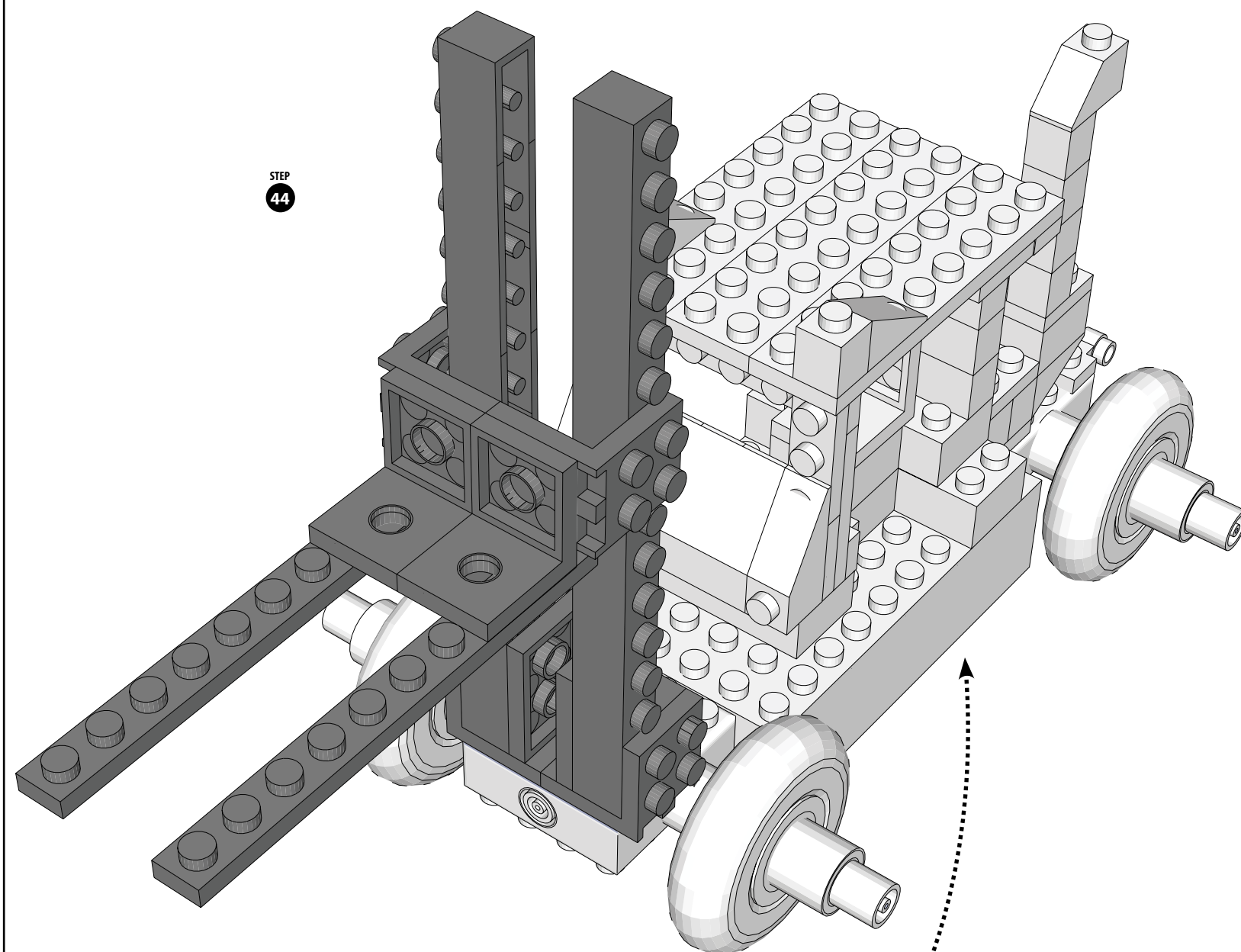


Environmental Phenomena

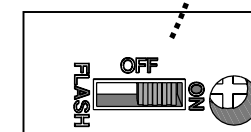
* The unit may malfunction if subjected to radio-frequency interference. It SHOULD revert to normal operation when the interference stops. If not, it may become necessary to turn the power off and back on, or remove and reinstall the batteries. * In the unlikely event of an electrostatic discharge, the unit may malfunction and lose memory, requiring the user to reset the device by removing and reinstalling the batteries.

STEP

44



Slide the switch to Light It Up!



OFF - Turns lights OFF
ON - Turns lights ON
FLASH - Makes lights FLASH

Laser Pegs® CARES
Questions? Comments?
For additional compliance info:
1-866-432-3735
Contact: Support@LaserPegs.com

MADE IN CHINA
www.LaserPegs.com
Copyright 2015© All Rights Reserved
U.S. Patent No. 8,864,546 & Other Patents Pending