

LASER PEGS®

The Ultimate Construction Toy For Kids®

GI670B
CARGO PLANE

AGES 5+
12 Models+
Any creation you can build

LIGHTED
CONSTRUCTION SET INCLUDES:

- 14 Laser Pegs®
- 80 Construction Parts
- Triangle Power Base
- Instruction Manual

Requires 3 AA Batteries

Batteries NOT Included

EN71, RoHS COMPLIANT

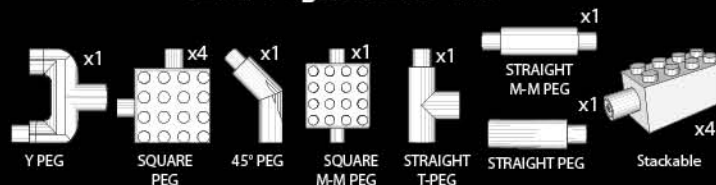
This product complies to all safety requirements of ASTM F 963



MODEL INSTRUCTIONS

All additional model instructions can be downloaded at www.LaserPegs.com

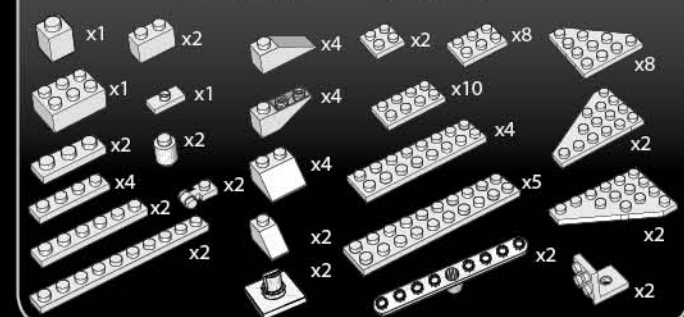
Laser Pegs® Parts List



Each Laser Peg® is color coded on the circuit board inside each shape. There is No LED In The 90 Degree Peg.



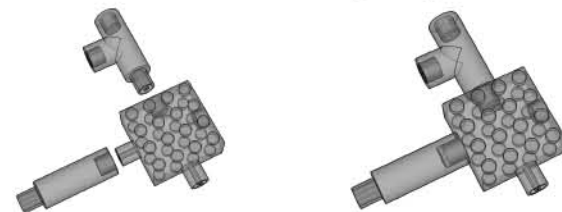
Construction Parts List



www.LaserPegs.com

This manual is copyright and cannot be reproduced or used online without Laser Pegs® Ventures LLC permission. Copyright 2014 © All Rights Reserved US Patent #7,731,558 Additional Global & Multiple Patents Pending. Laser Pegs® Ventures LLC. 8304 Consumer Ct Sarasota FL. 34240. Contact: Support@LaserPegs.com

Connecting Pegs



To construct with Laser Pegs®, slide two pieces together to form a connection. Slide each piece on and off smoothly. The 90° Pegs are essential to construction but they DO NOT LIGHT UP.

Environmental Phenomena

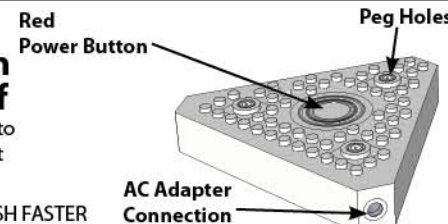
* The unit may malfunction if subjected to radio-frequency interference. It SHOULD revert to normal operation when the interference stops. If not, it may become necessary to turn the power off and back on, or remove and reinstall the batteries.

* In the unlikely event of an electrostatic discharge, the unit may malfunction and lose memory, requiring the user to reset the device by removing and reinstalling the batteries.

Push Red Power Button to turn on/off

Push Red Power Button to cycle through 4 different light settings.

SOUND/ON/FLASH/FLASH FASTER



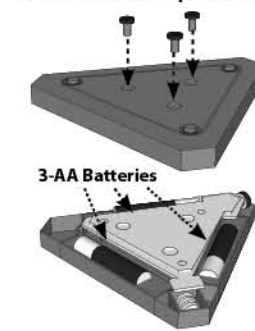
WARNING: STROBE LIGHTS MAY CAUSE SEIZURES

The toy is not to be connected to more than the recommended number of power supplies

Replacing Batteries

1. Remove the three (3) screws.
2. Place three (3) AA batteries in the correct position - as displayed inside the Triangle Power Base.
3. Reassemble the Triangle Power Base.
4. Replace the three (3) screws.
5. Push RED Power Button to turn on!
6. Do not mix old and new batteries.
7. Do not mix alkaline, standard (carbon-zinc), or rechargeable (nickel-cadmium, NiMH) batteries!
8. Exhausted batteries are to be removed from the Triangle Power Base.
9. Never connect more than 200 Laser Pegs®
10. Non-rechargeable batteries are not to be recharged.
11. Rechargeable batteries are only to be recharged under adult supervision.
12. Rechargeable batteries are to be removed from the toy before being recharged.
13. Batteries are to be inserted with the correct polarity.
14. The supply terminals are not to be short-circuited.
15. DO NOT THROW BATTERIES INTO FIRE!

Remove the 3 Phillips head screws

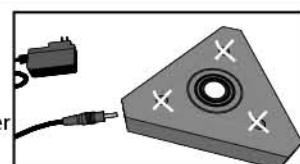


Remove the three Phillips head screws with a 4mm screw driver. Requires (3AA) Batteries

Please dispose of batteries properly as per state and local regulations.

Using an AC Adapter

Remove all batteries from Laser Pegs® power base before using the 5-volt AC adapter.



When using an AC Adapter, NEVER place the adapter plug into the Triangle Power Base top peg holes.

*To avoid short-circuits, keep metal objects and other unauthorized materials from obstructing the peg holes.

Never connect more than 200 Laser Pegs® when using a 5-volt (2000mA) AC Adapter.

The AC adapter and the Triangle Power Base are to be regularly examined for damage to the cord, plug, enclosure and other parts, and in the event of such damage, they must not be used until the damage has been repaired.

WARNING! Each Laser Peg® draws current from the batteries. Therefore, the more pegs you use, the quicker you will deplete your battery power! As the power weakens, the current will slowly fail and some Laser Pegs® will illuminate (typically the reds and yellows) and some won't. When the Laser Pegs® dim the Laser Pegs® are not broken, they just need stronger batteries or an AC Adapter.

You have 3 simple options...

1. Use a 5-volt AC Adapter -available from www.LaserPegs.com
2. Change the batteries.
3. Use high quality batteries. They will last a little longer, but they will still deplete rapidly the more laser pegs you connect!

DO NOT SUBMERGE IN WATER

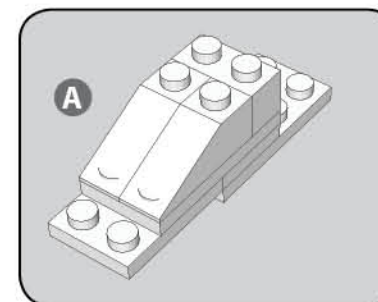
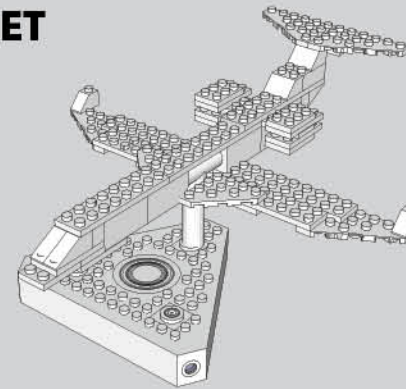
EXECUTIVE JET - One of the first "ultra-long range" business aircraft capable of carrying up to 16 people in standard seating configurations, and able to fly up to 6,500 miles.



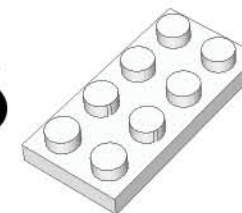
EXECUTIVE JET

Model Difficulty Level

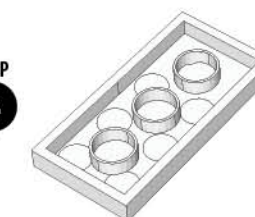
3



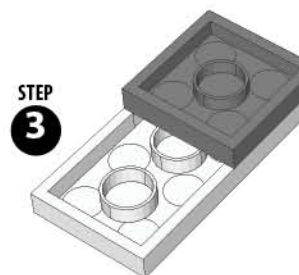
STEP 1



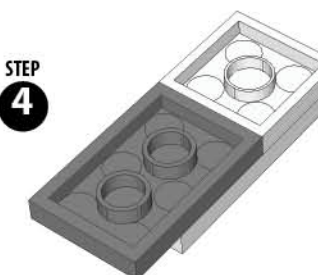
STEP 2



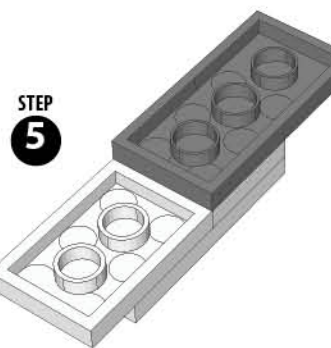
STEP 3



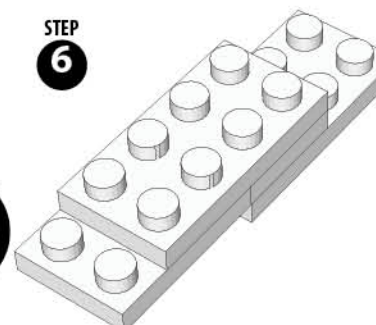
STEP 4



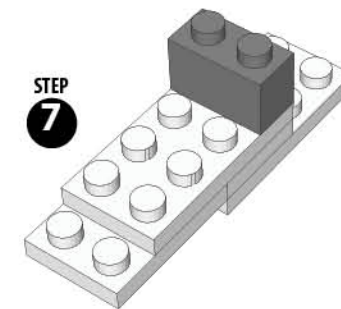
STEP 5



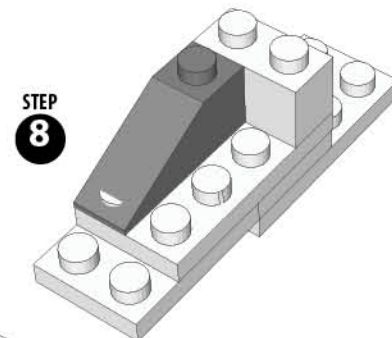
STEP 6



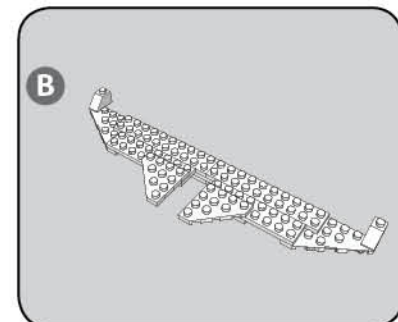
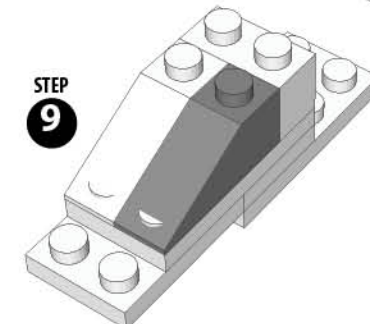
STEP 7



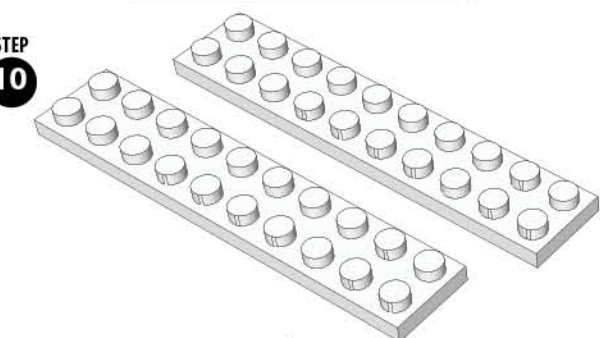
STEP 8



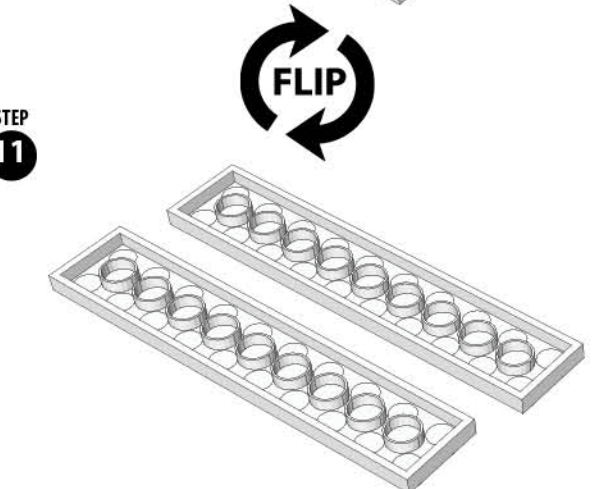
STEP 9



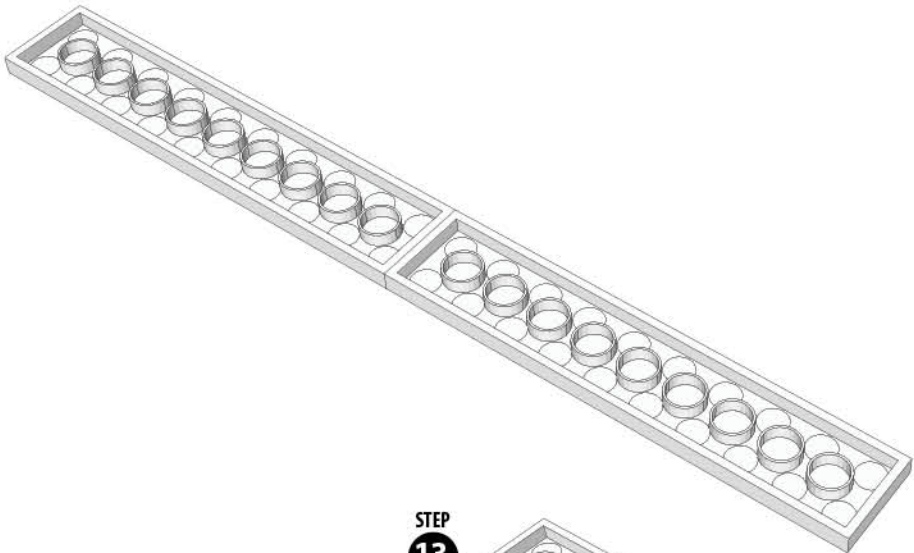
STEP 10



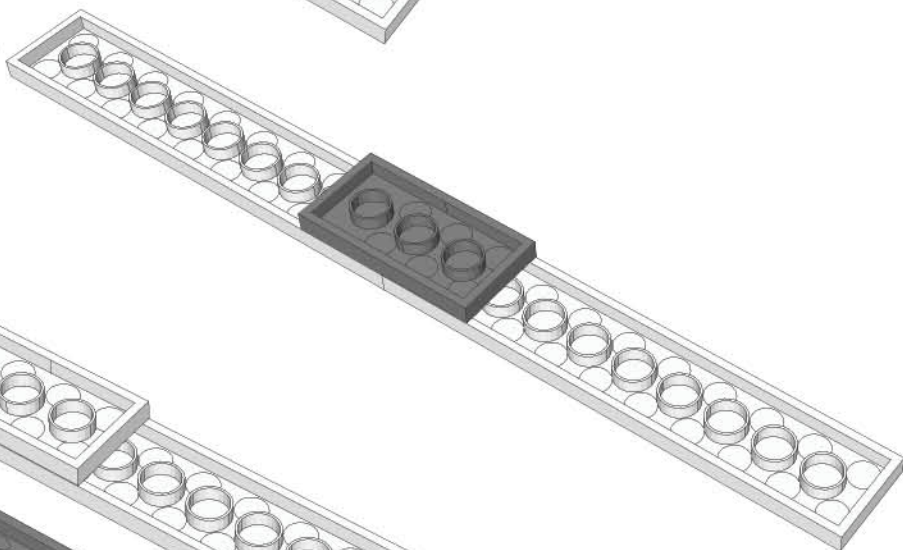
STEP 11



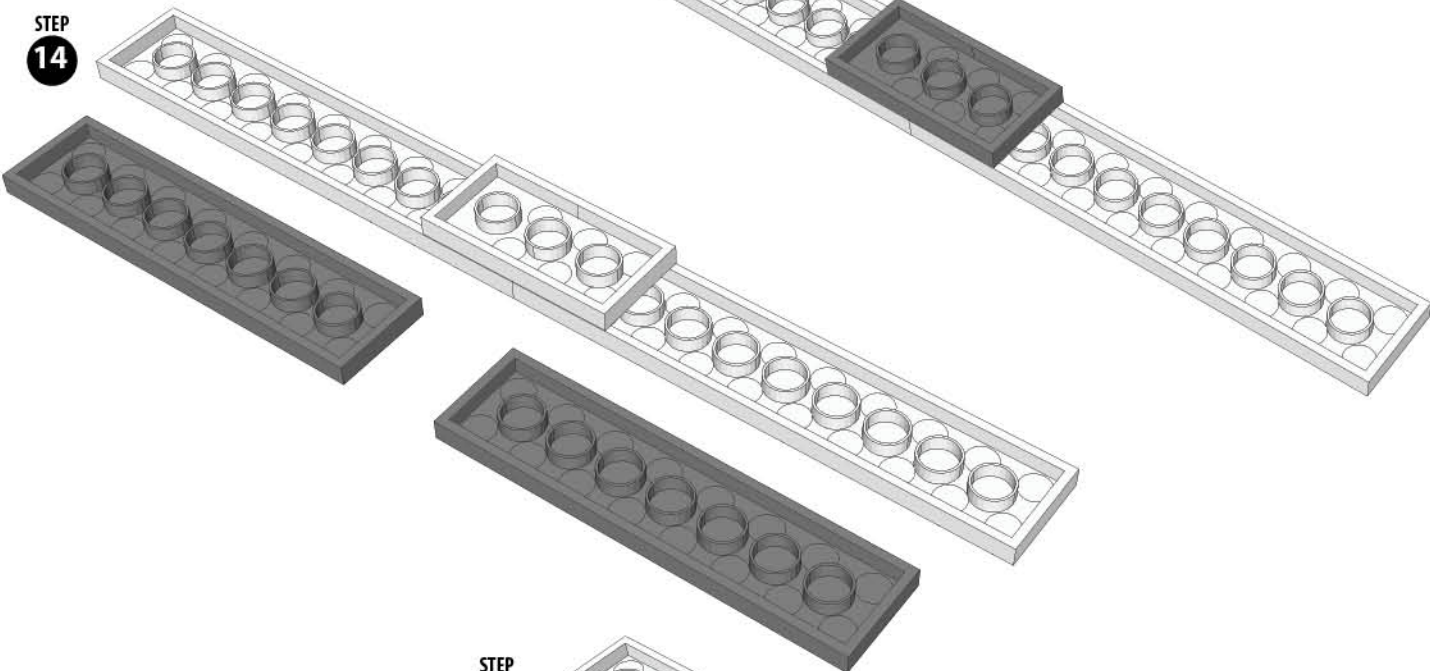
STEP
12



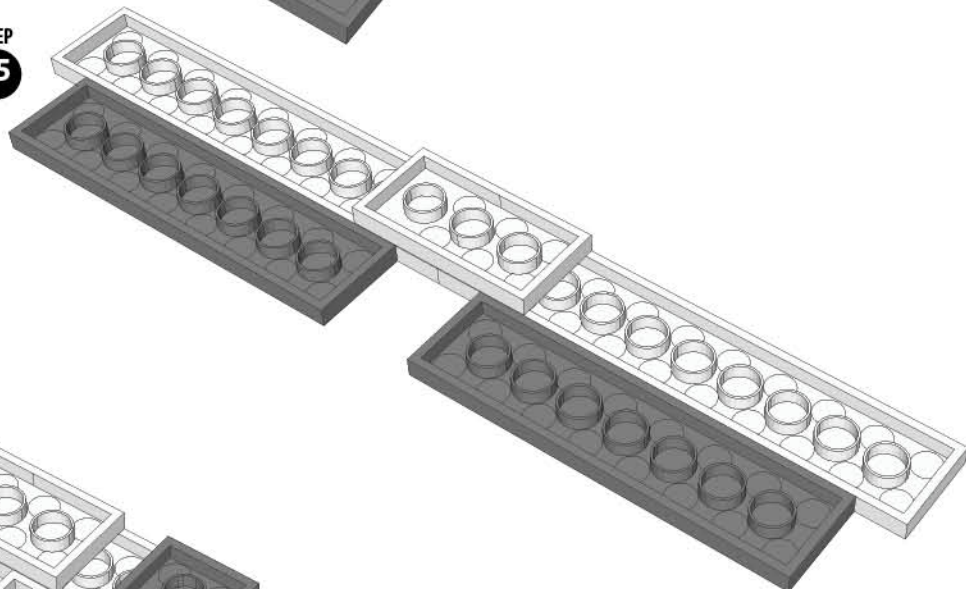
STEP
13



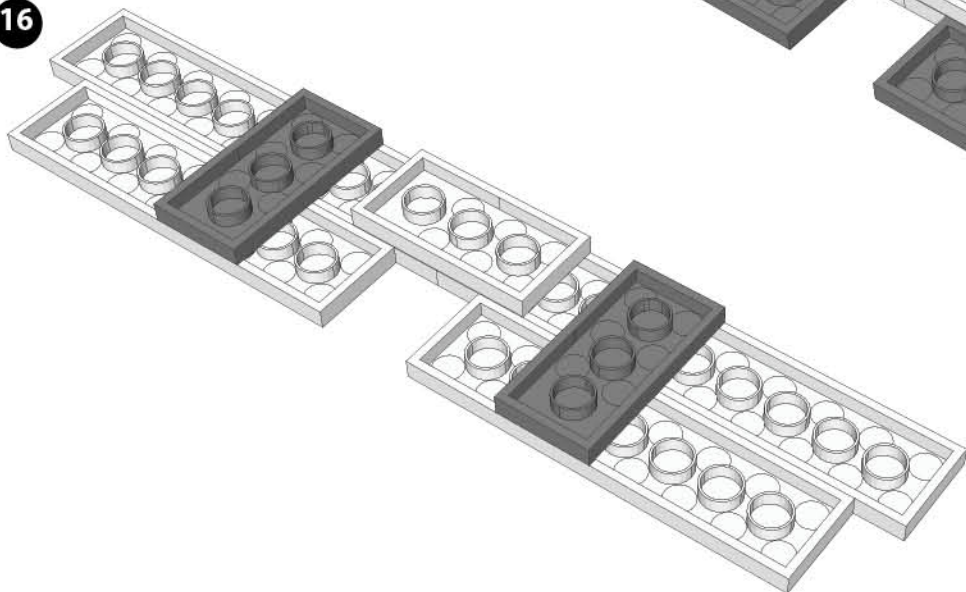
STEP
14



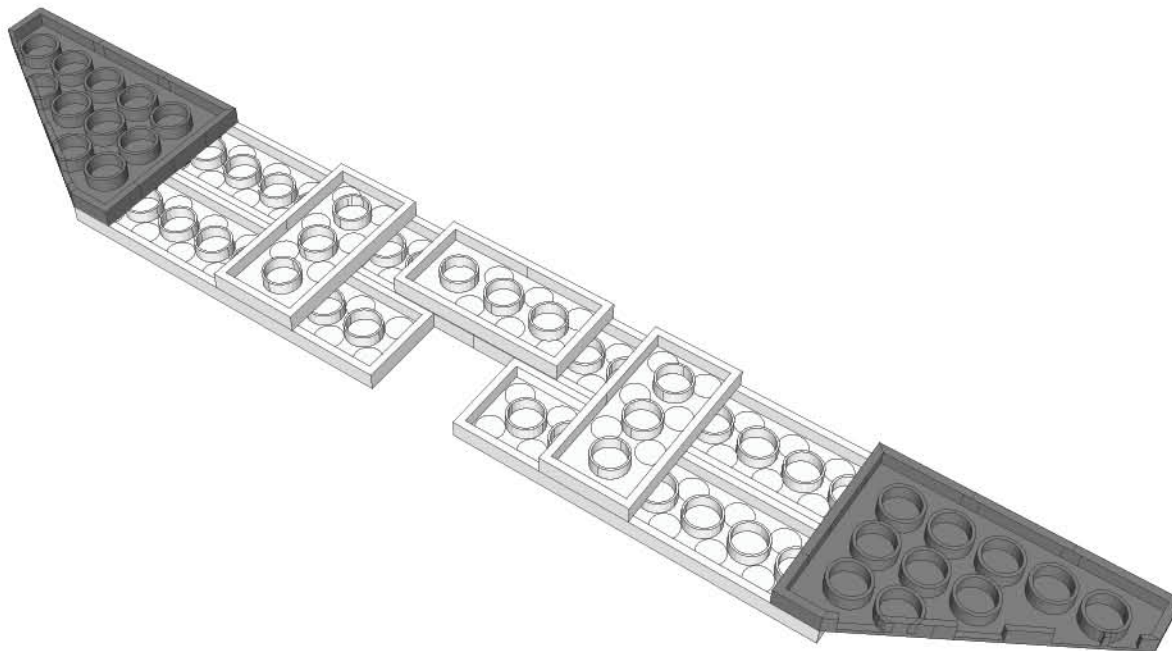
STEP
15



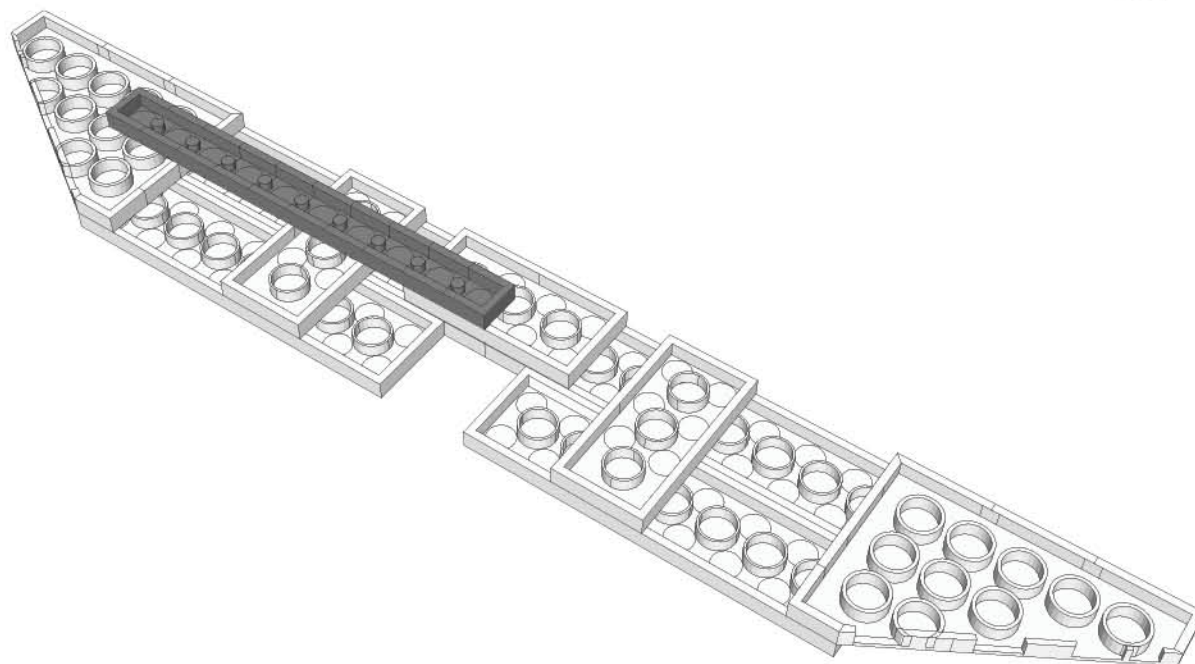
STEP
16



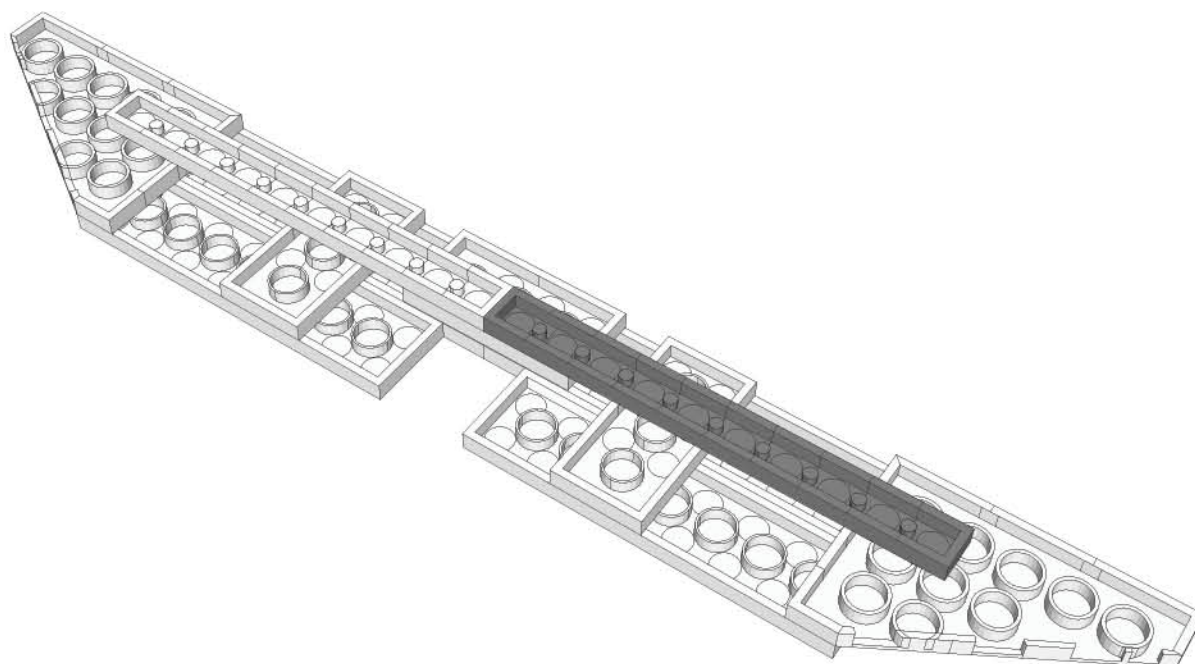
STEP
17

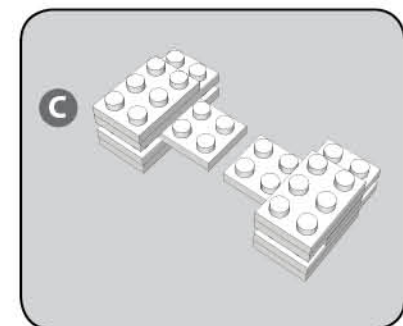
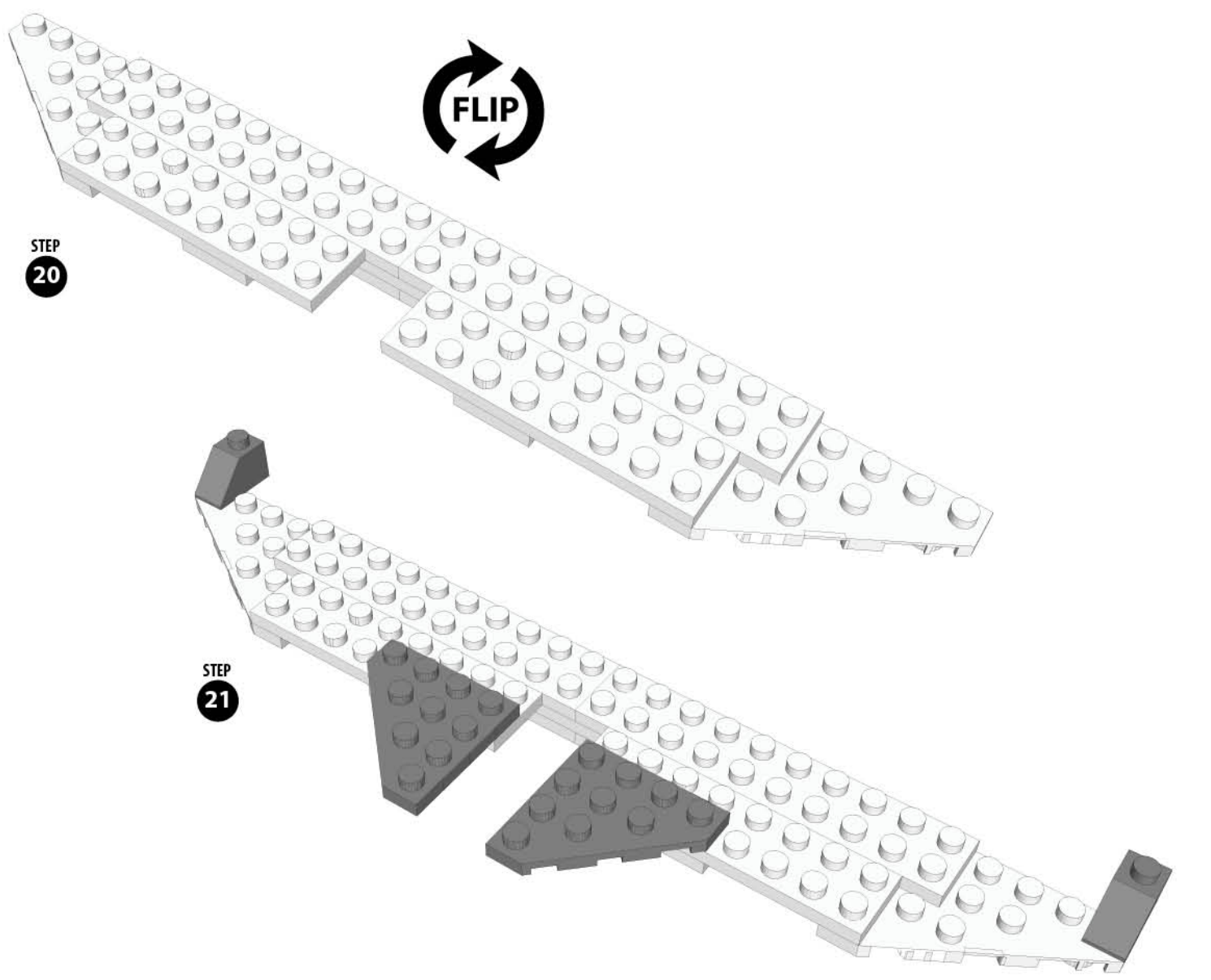


STEP
18

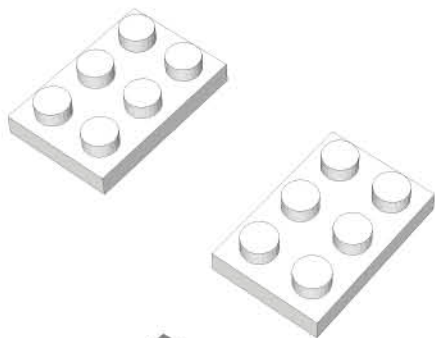


STEP
19

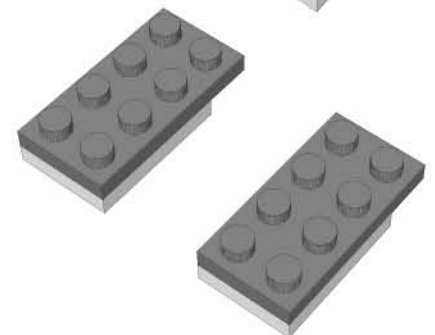




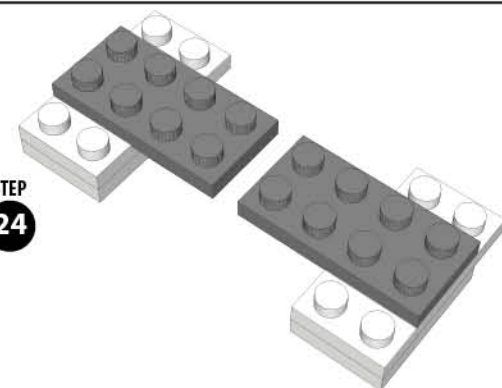
STEP 22



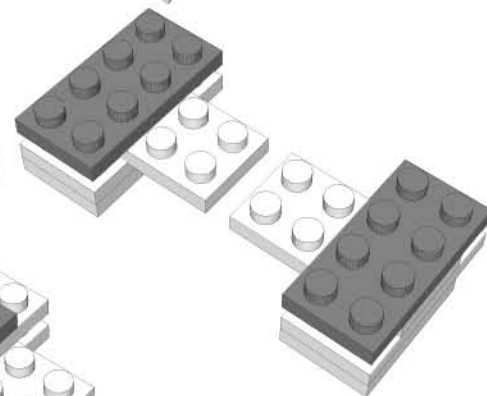
STEP 23



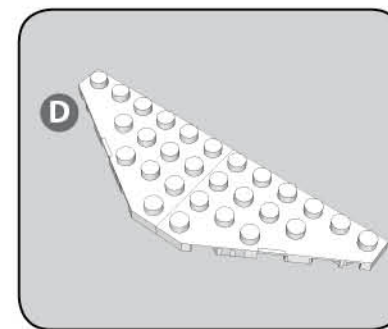
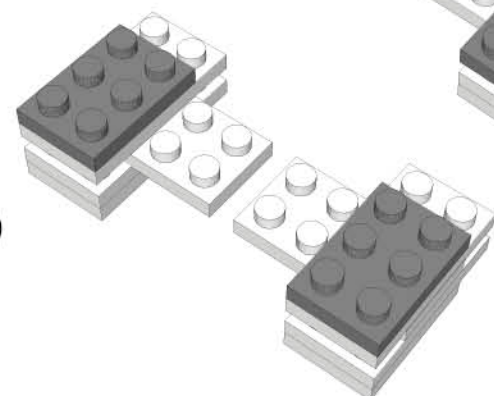
STEP 24



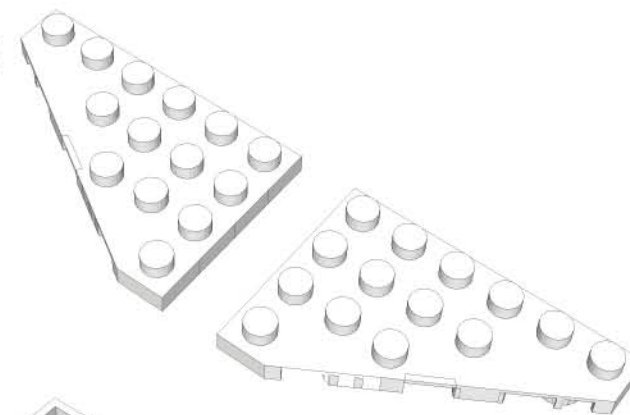
STEP 25



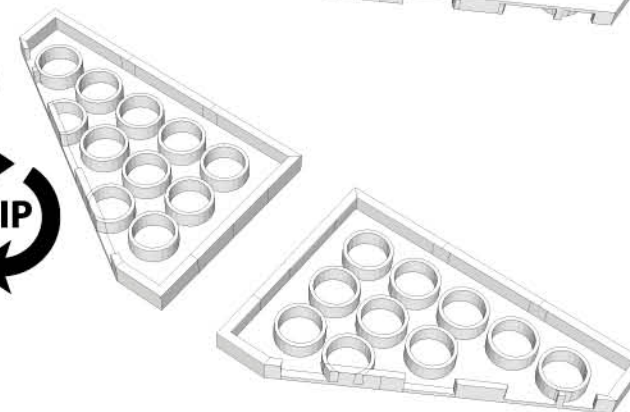
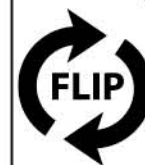
STEP 26



STEP 27



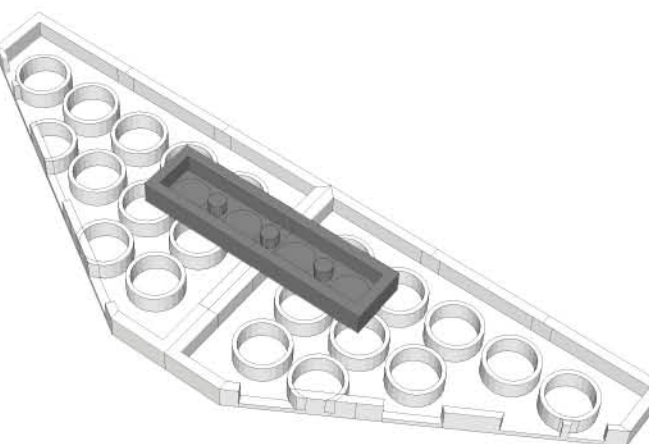
STEP 28



STEP 29

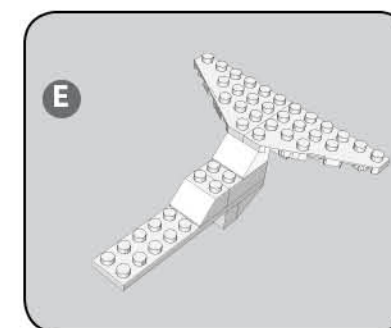
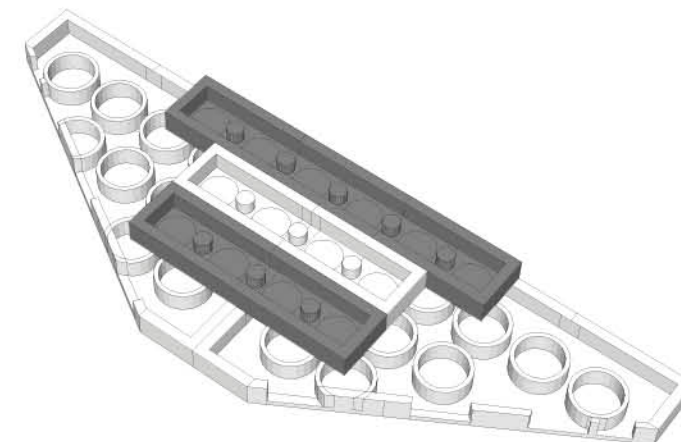


STEP 30



MADE IN CHINA

STEP 31



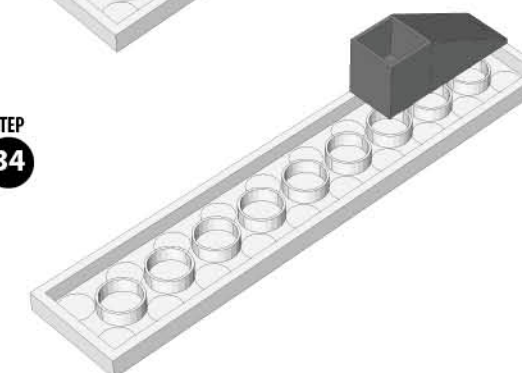
STEP 32



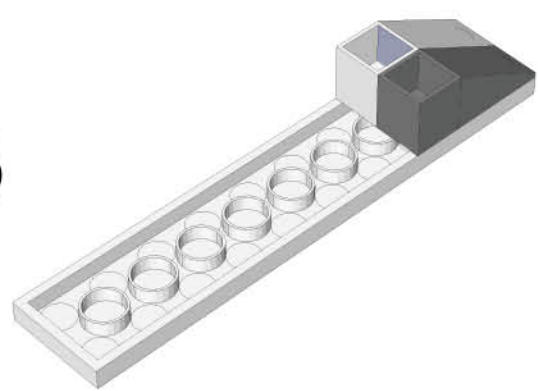
STEP 33



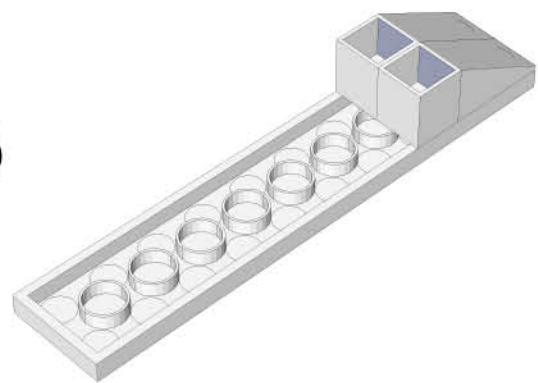
STEP 34



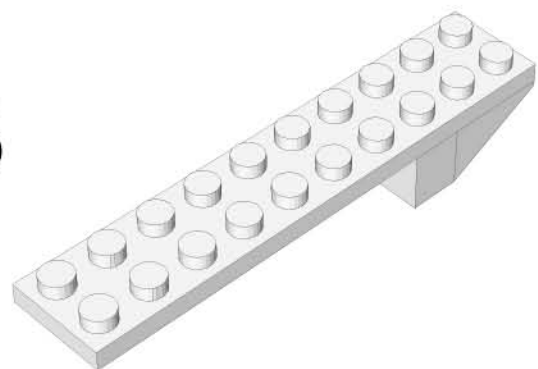
STEP
35



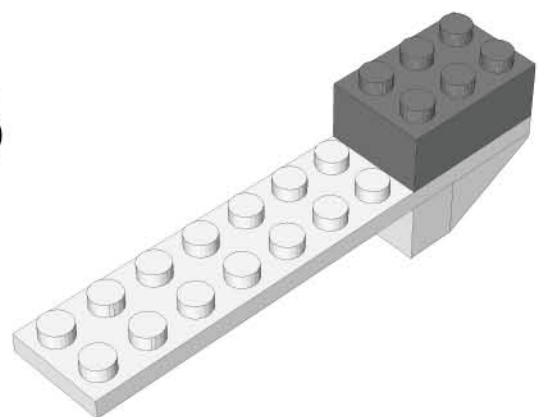
STEP
36



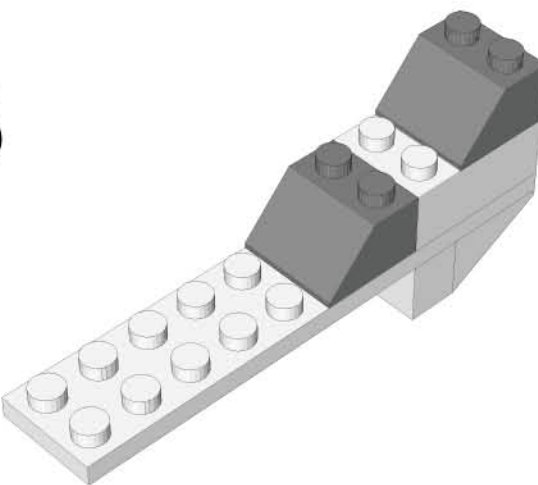
STEP
37



STEP
38



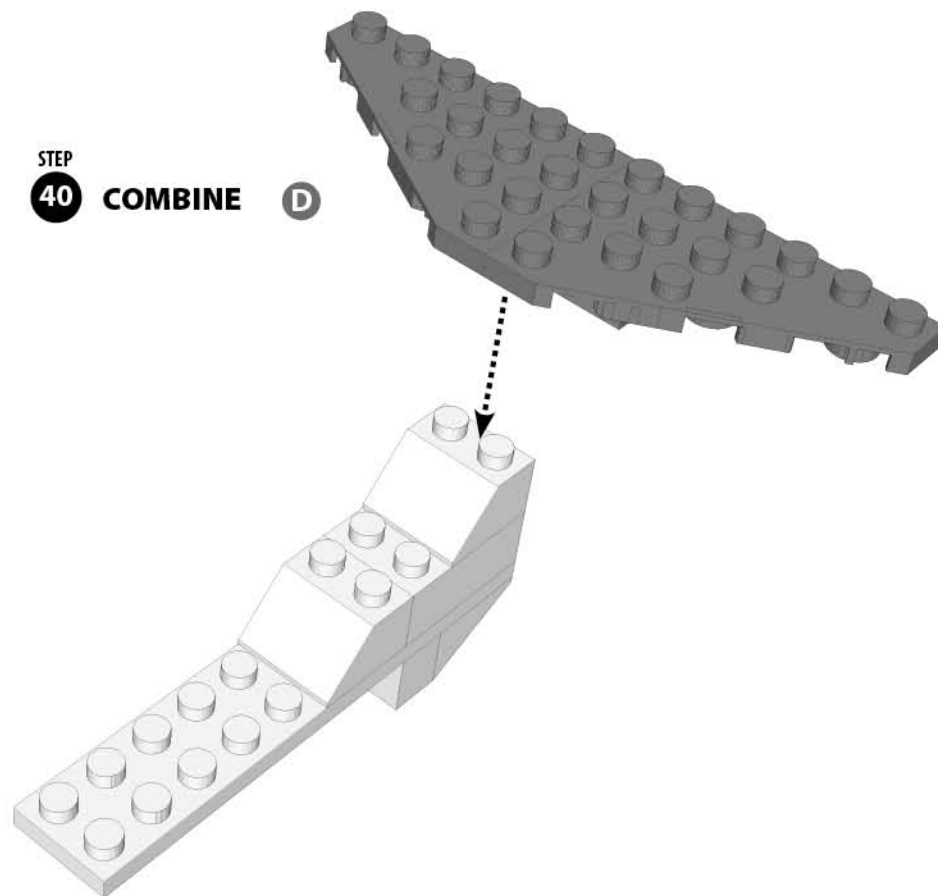
STEP
39



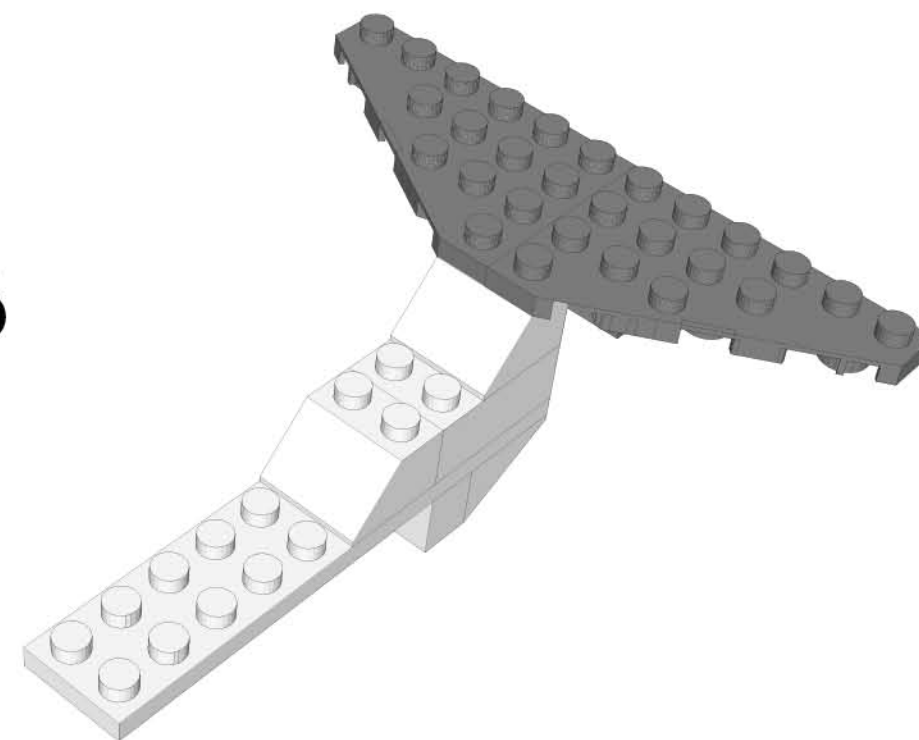
STEP
40

COMBINE

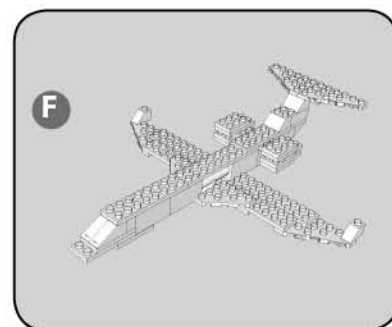
D



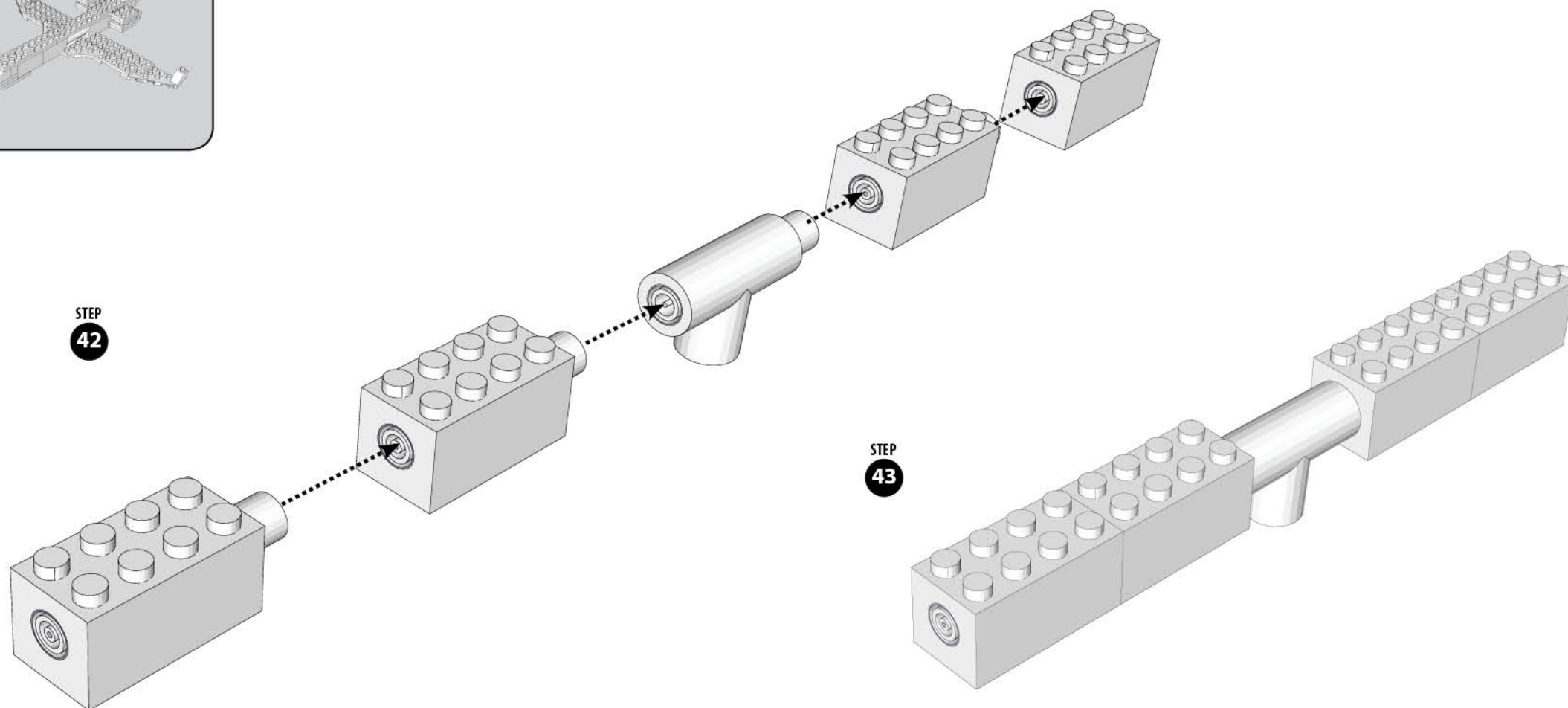
STEP
41



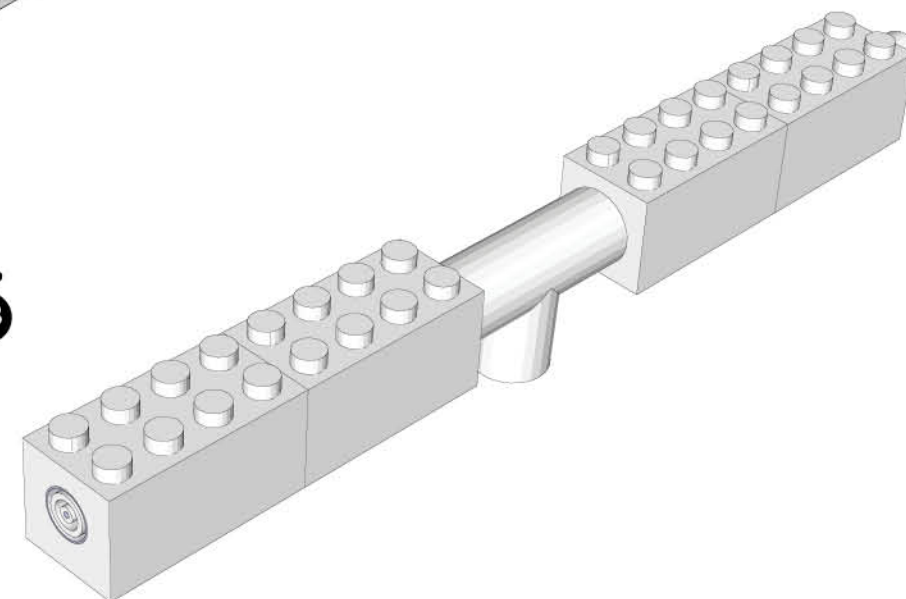
F



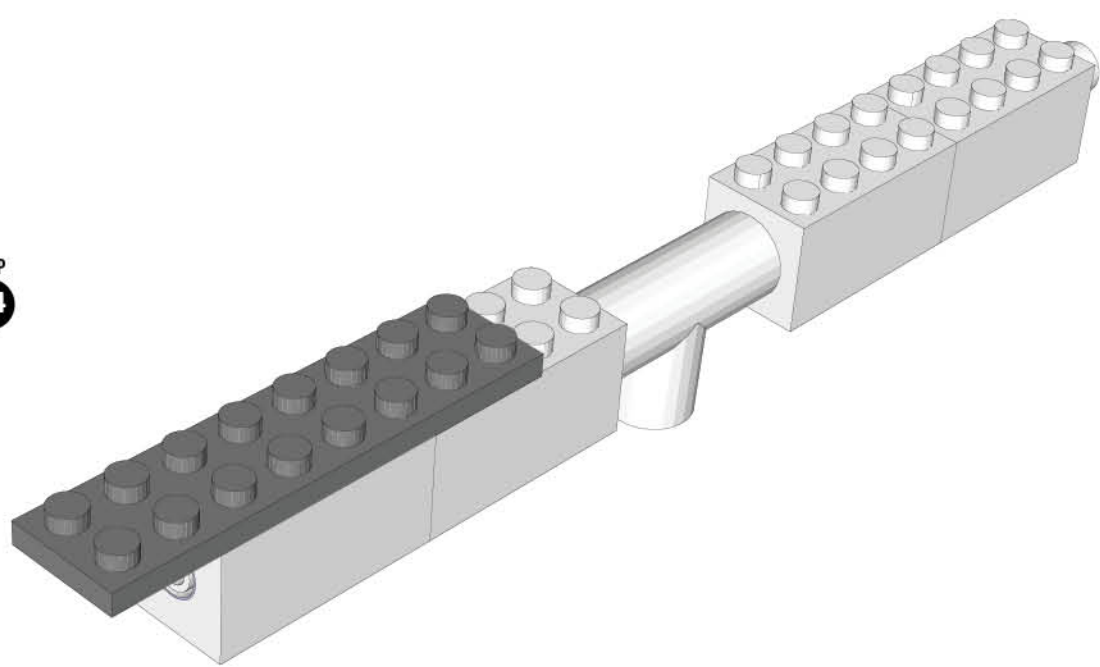
STEP
42



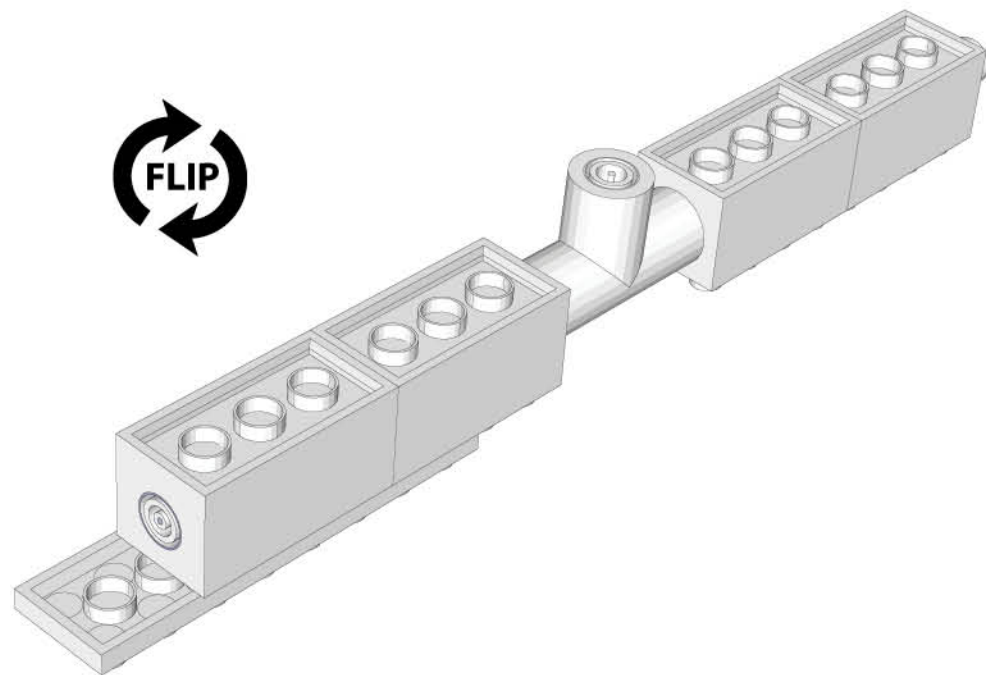
STEP
43



STEP
44

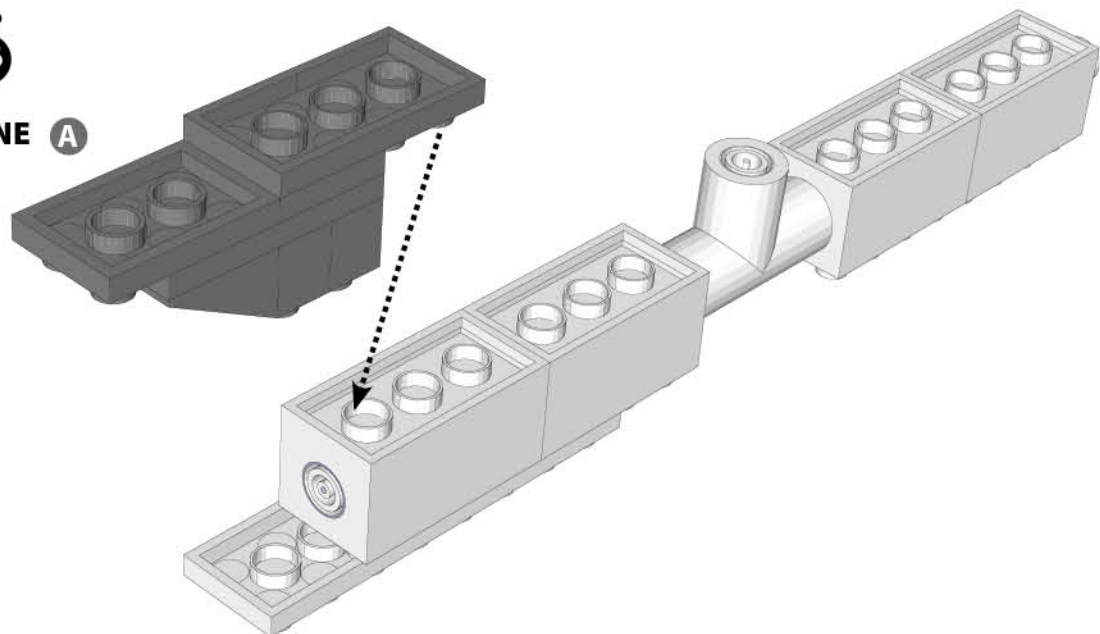


STEP
45

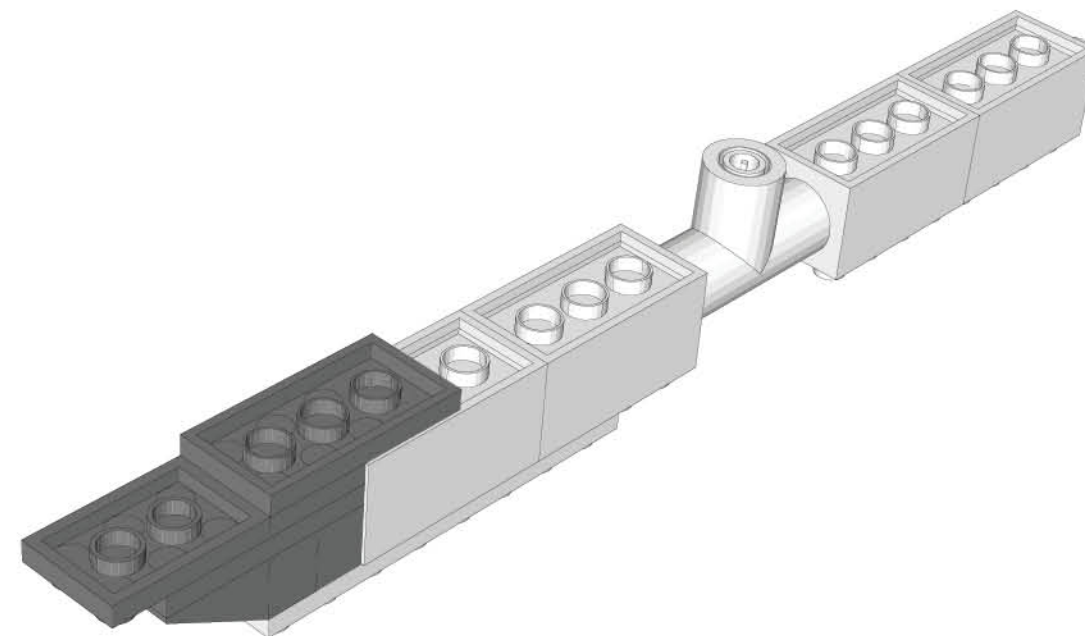


STEP
46

COMBINE A



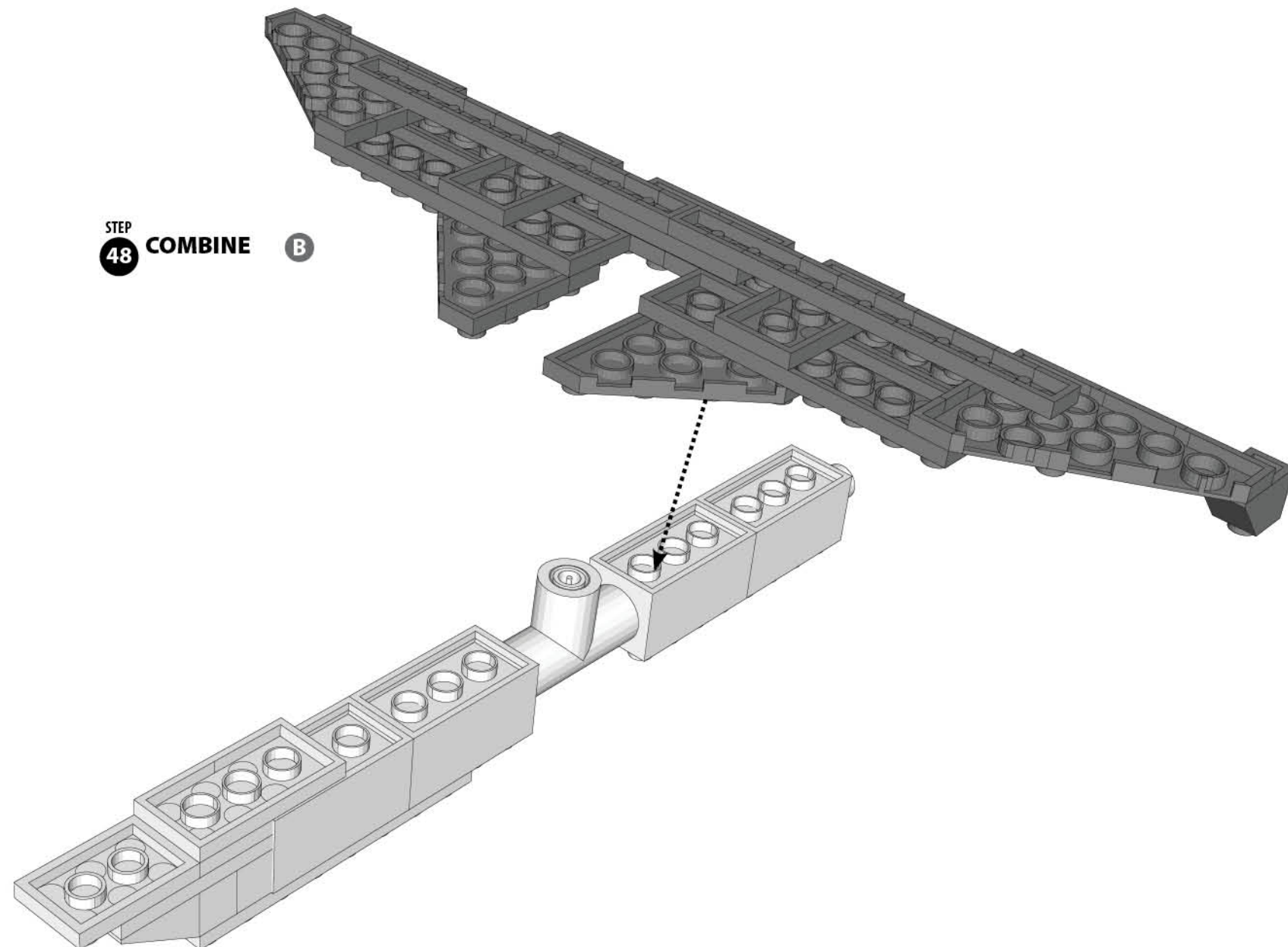
STEP
47



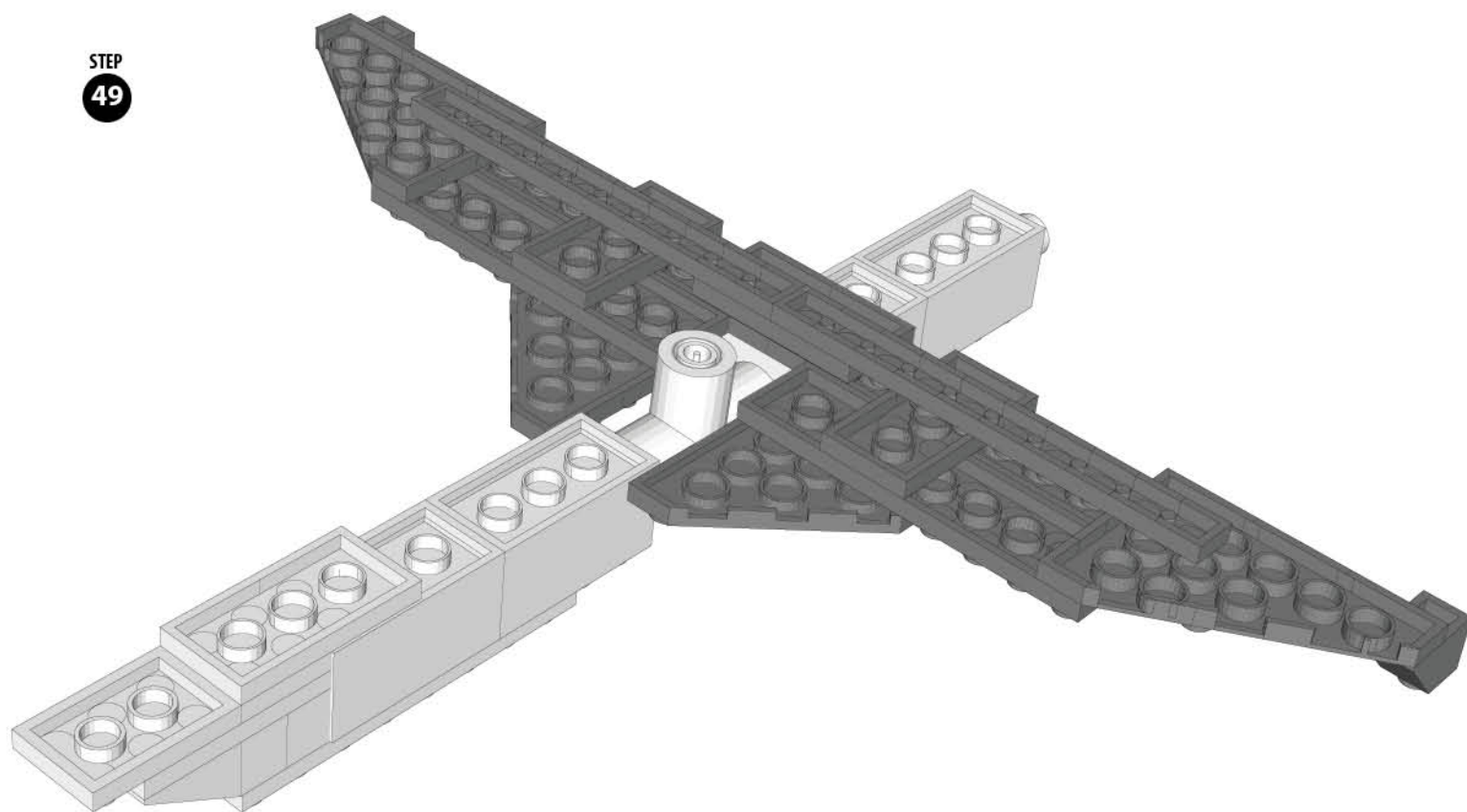
STEP
48

COMBINE

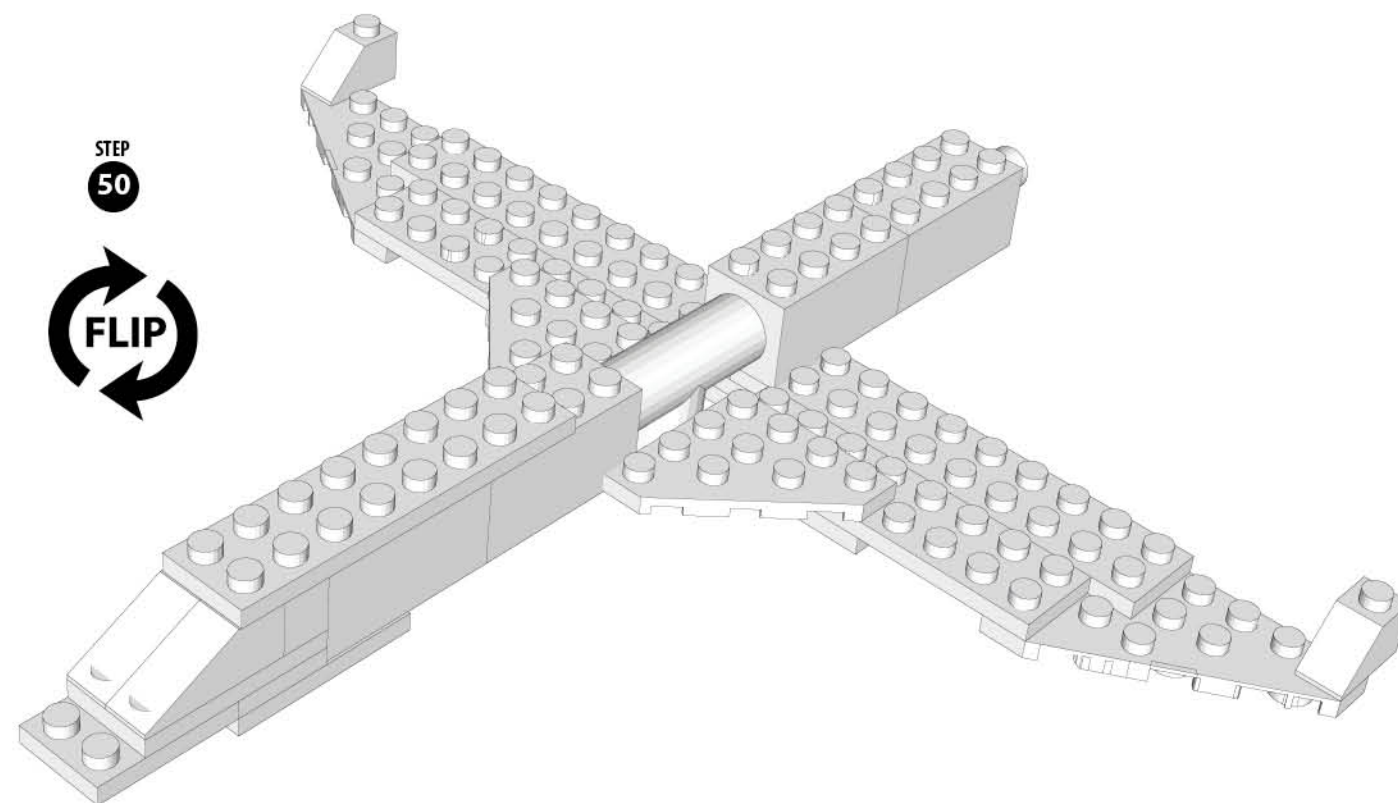
B



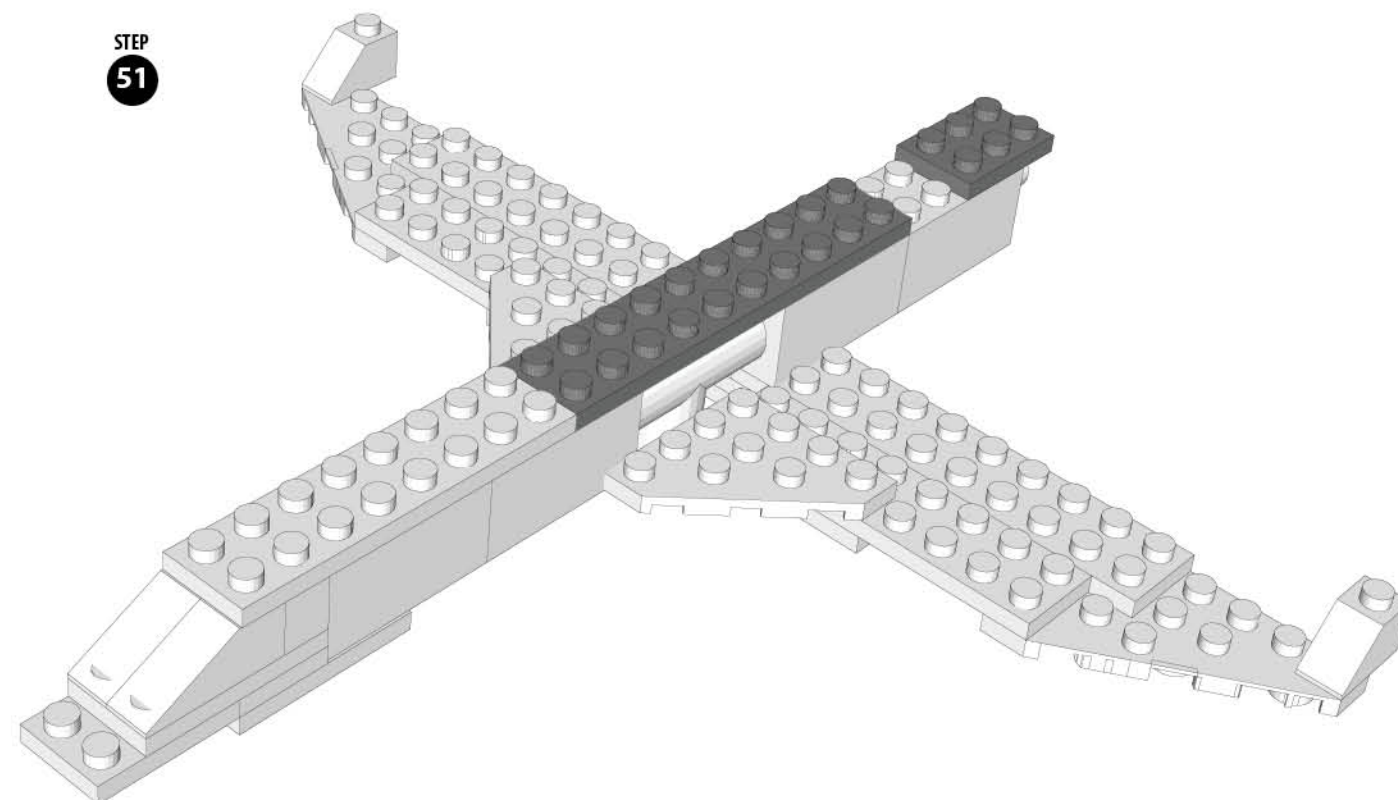
STEP
49



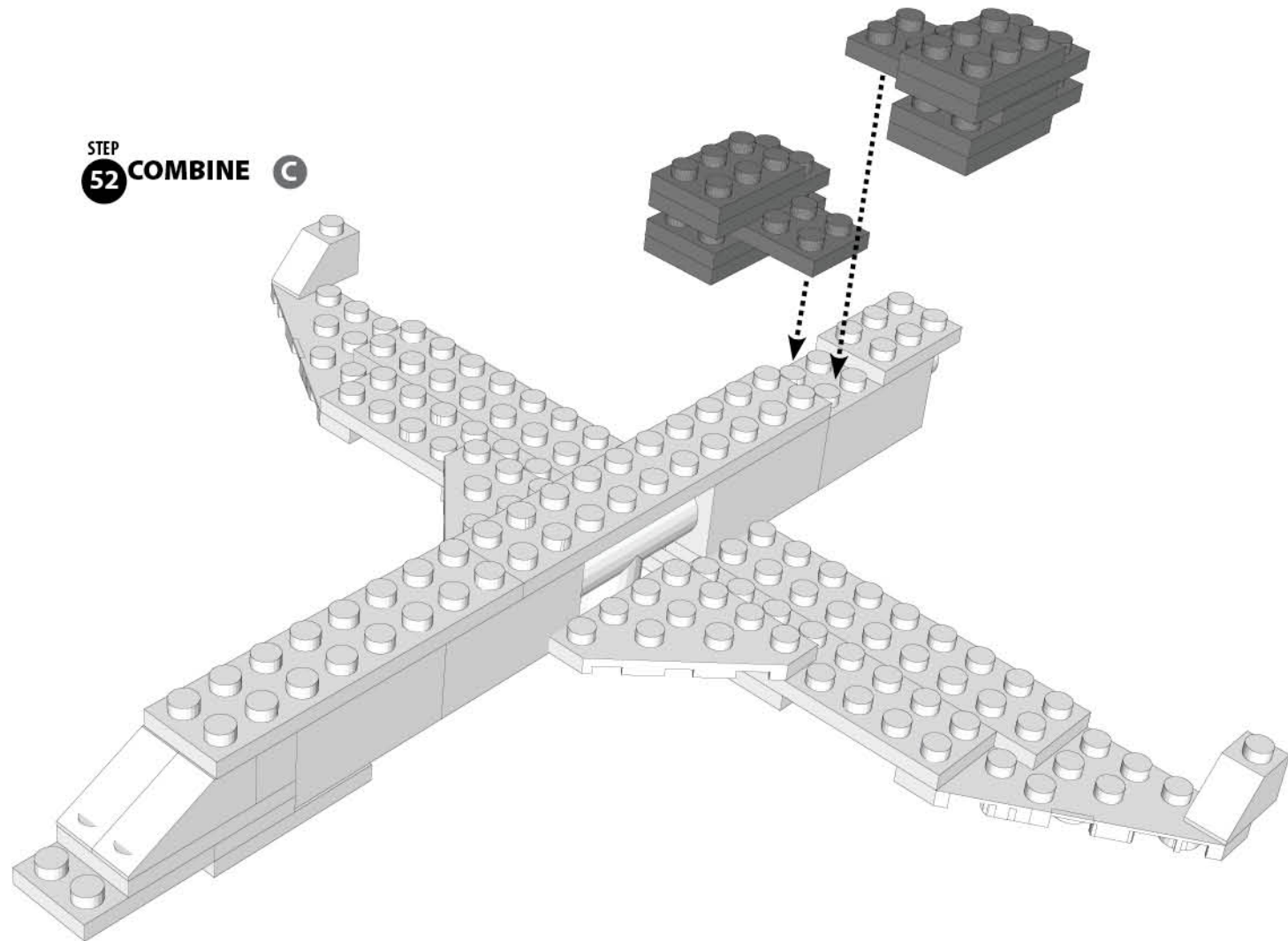
STEP
50



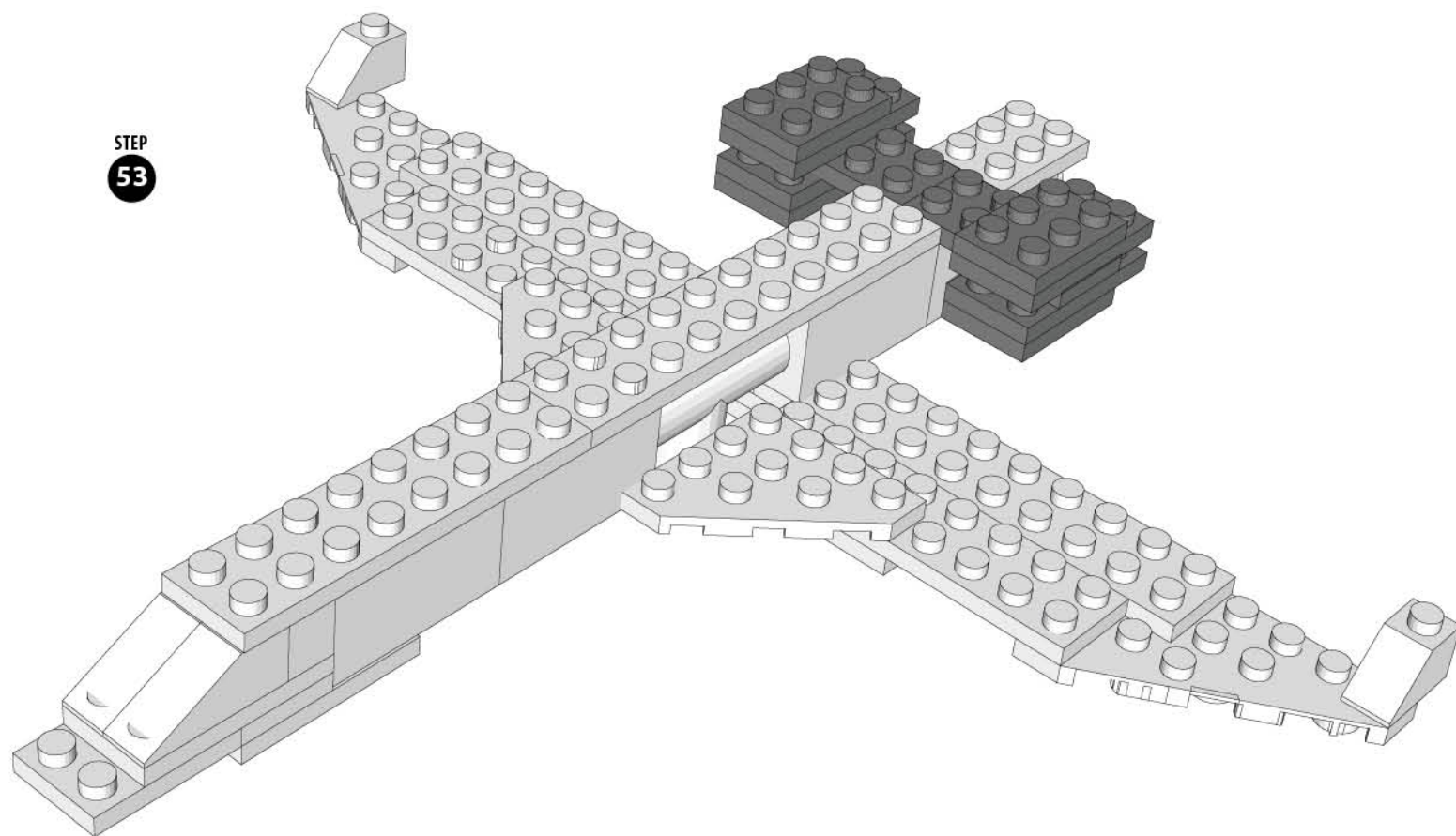
STEP
51



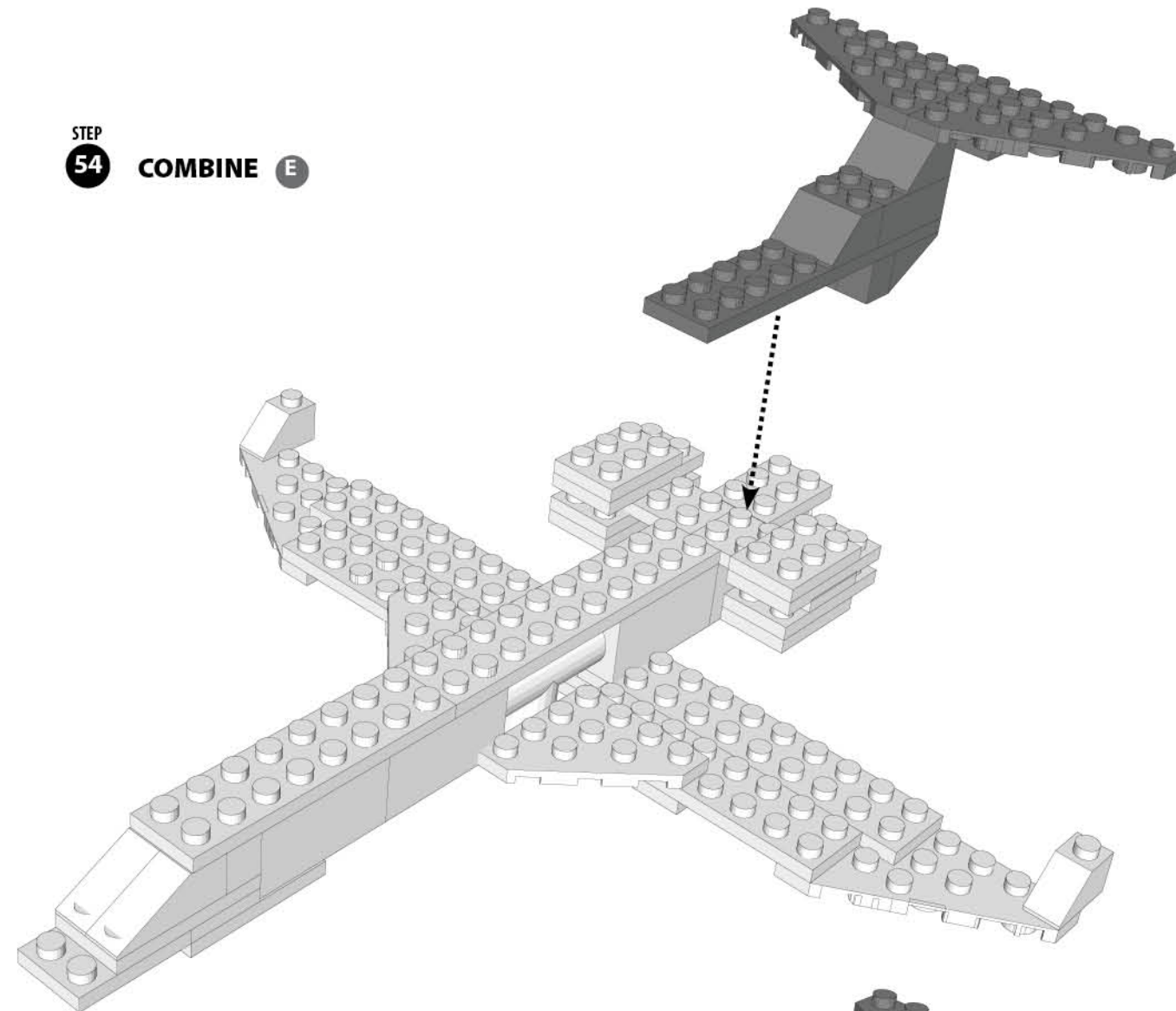
STEP
52 COMBINE C



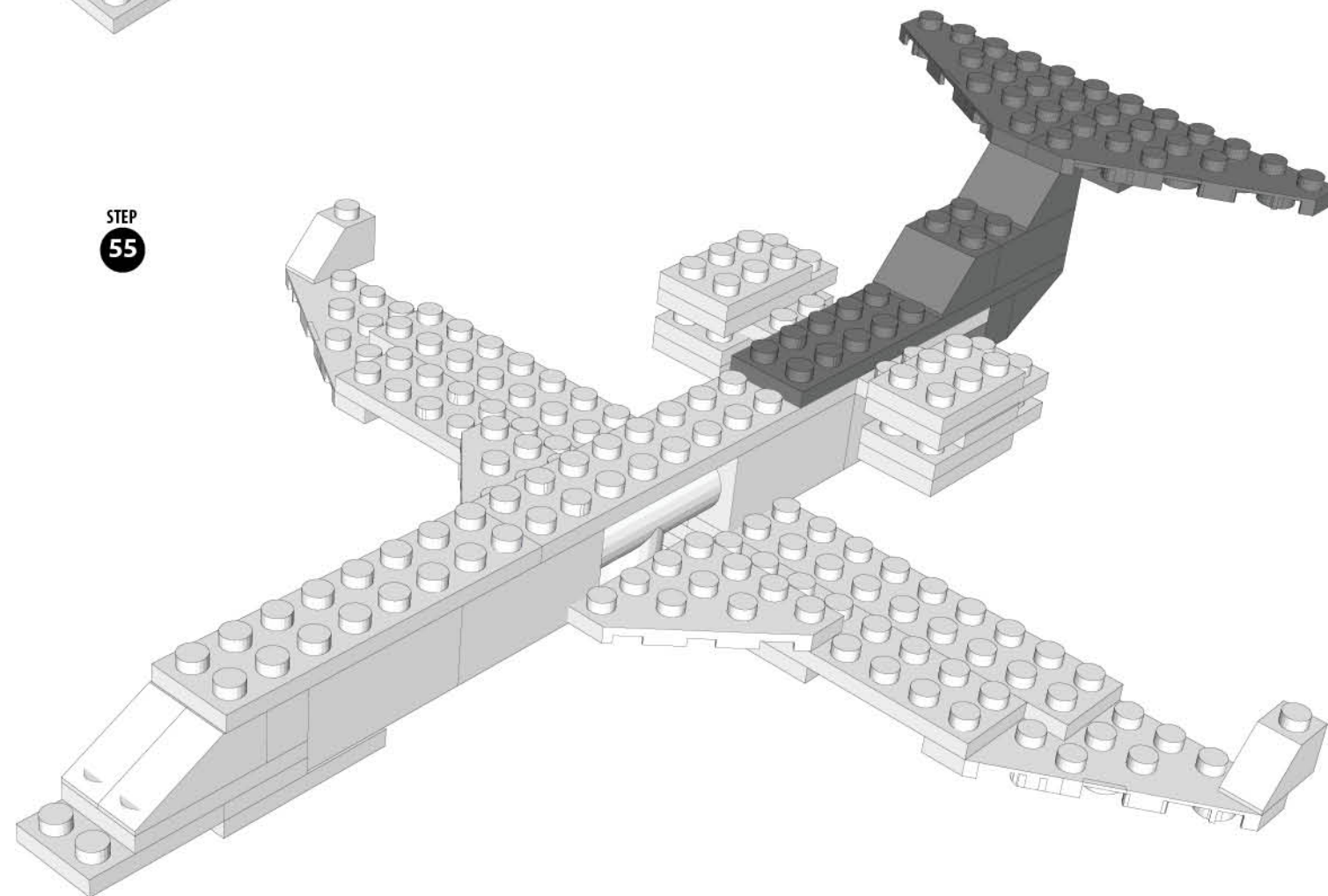
STEP
53



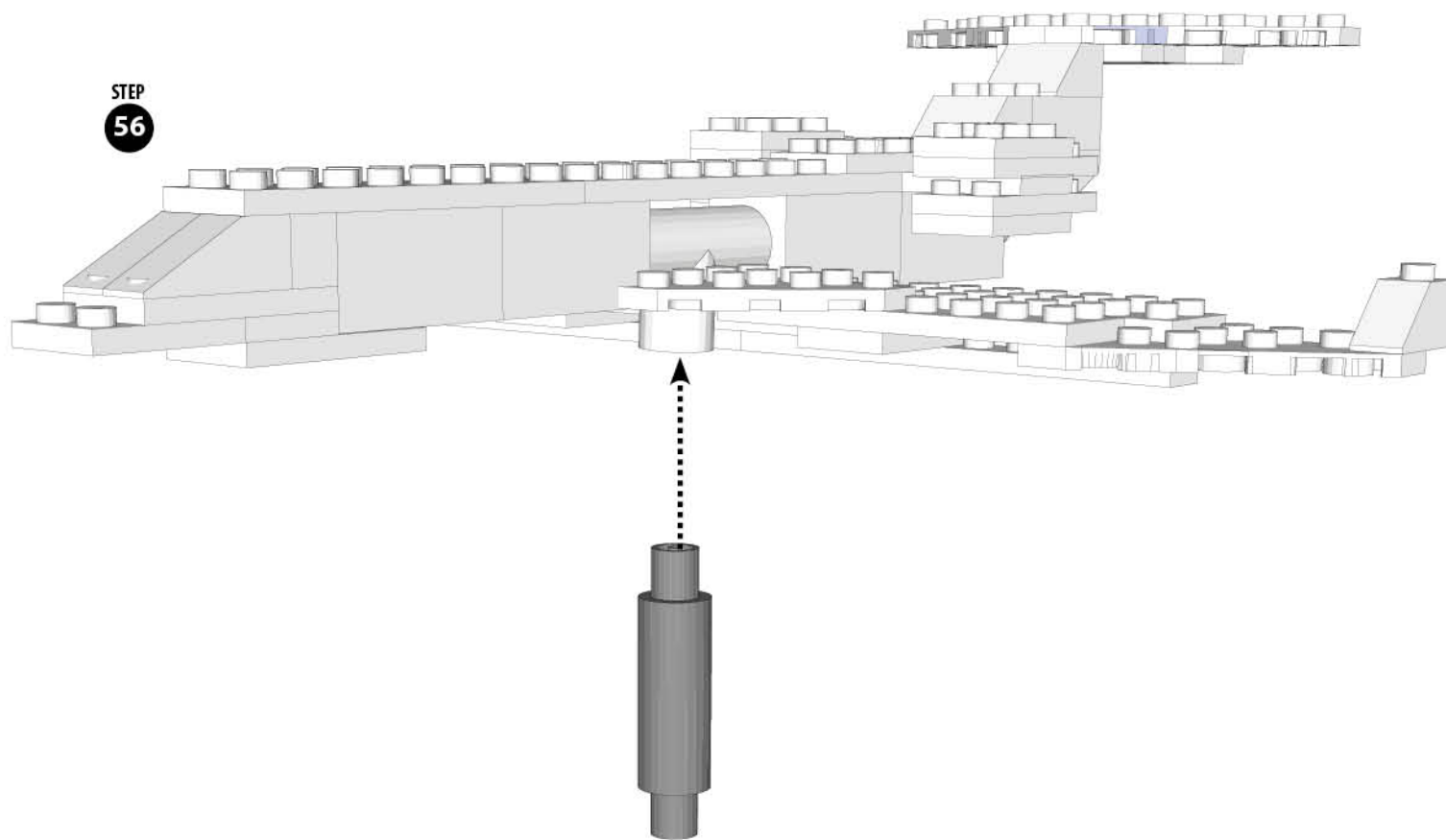
STEP
54 COMBINE E



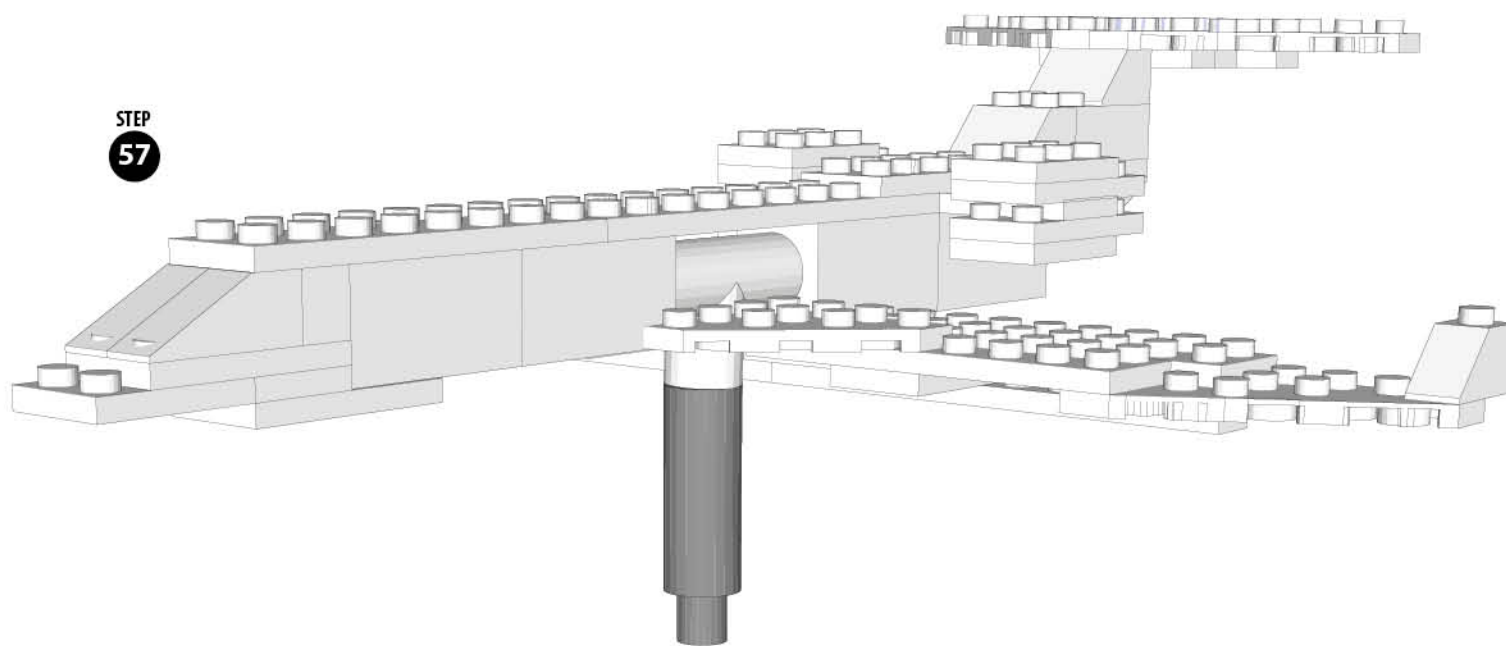
STEP
55



STEP
56



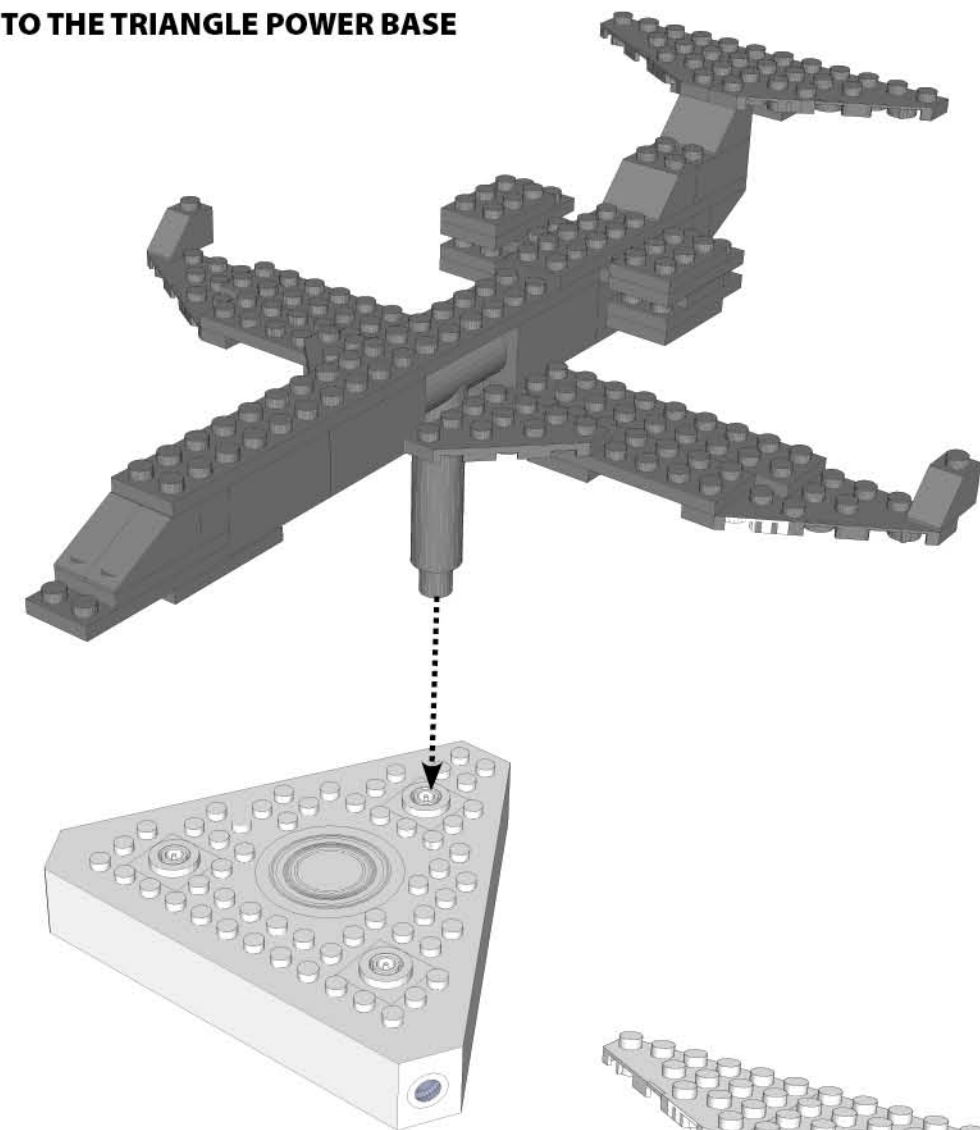
STEP
57



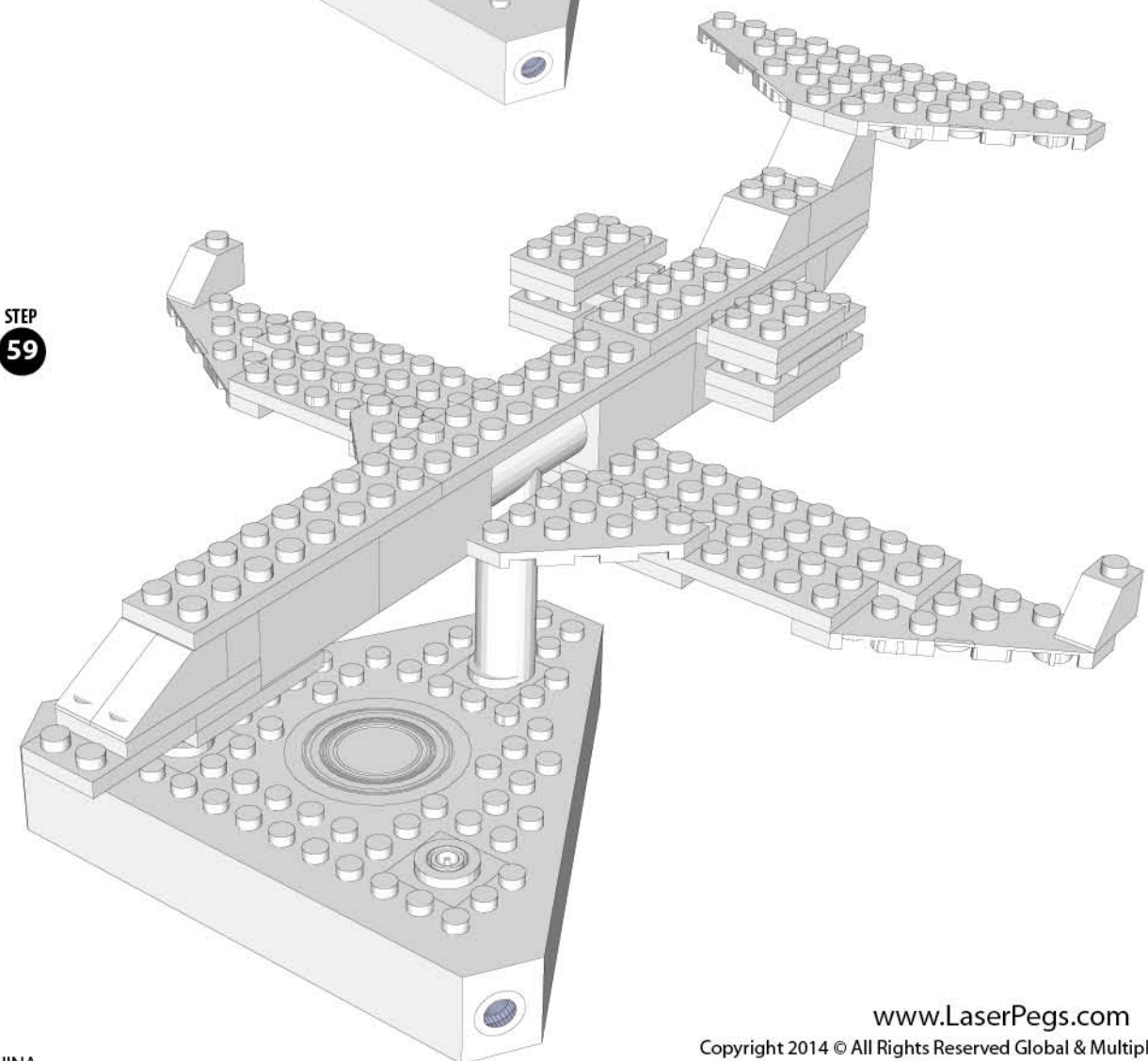
Laser Pegs® CARES
Questions? Comments?
For additional compliance info:
1-866-432-3735
Contact: Support@LaserPegs.com

ATTACH MODEL TO THE TRIANGLE POWER BASE

STEP
58



STEP
59



MADE IN CHINA

www.LaserPegs.com
Copyright 2014 © All Rights Reserved Global & Multiple Patents Pending.
US Patent #7,731,558