

LASER PEGS®

The Ultimate Construction Toy For Kids®

G9030B

**SPACE
FIGHTER
AGES 5+**

16 Models+
Any creation you can build

LIGHTED
CONSTRUCTION SET INCLUDES:

- 20 Laser Pegs®
 - 82 Construction Parts
 - Triangle Power Base
 - Instruction Manual
- Requires 3 AA Batteries

Batteries NOT
Included

**WARNING:
CHOKING HAZARD**—Small parts.
Not for children under 3 yrs.
Do not submerge in water.

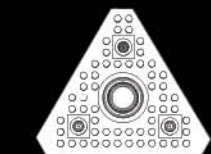
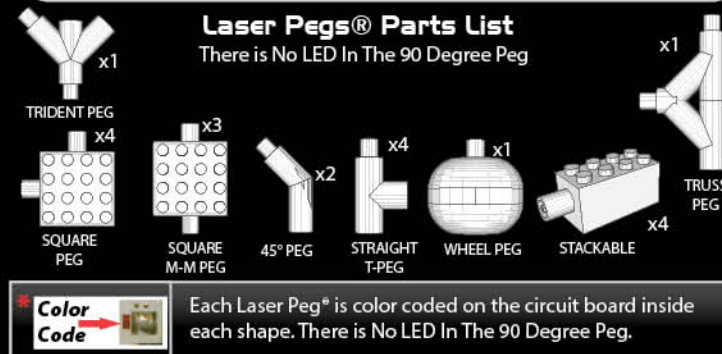
EN71, RoHS COMPLIANT



This product complies to
all safety requirements
of ASTM F 963

MODEL INSTRUCTIONS

All additional model instructions can
be downloaded at www.LaserPegs.com

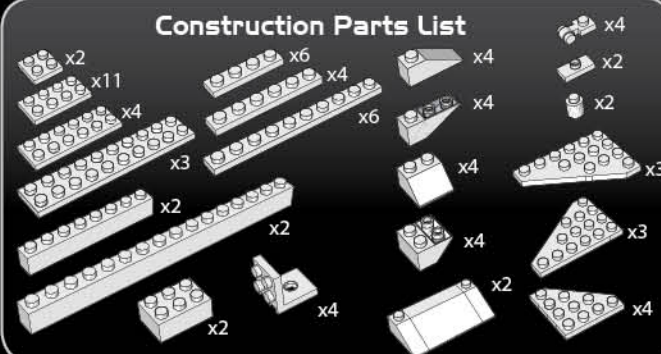


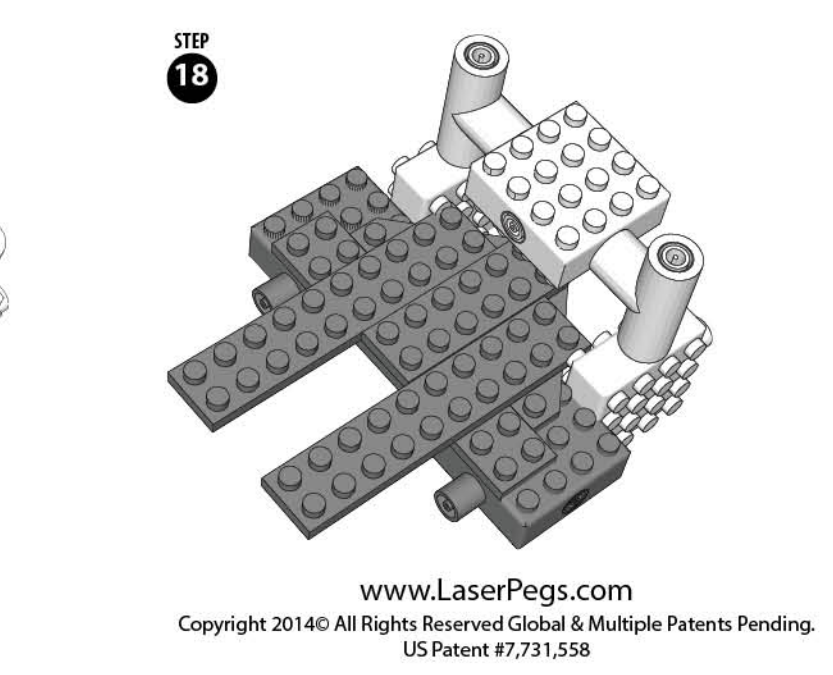
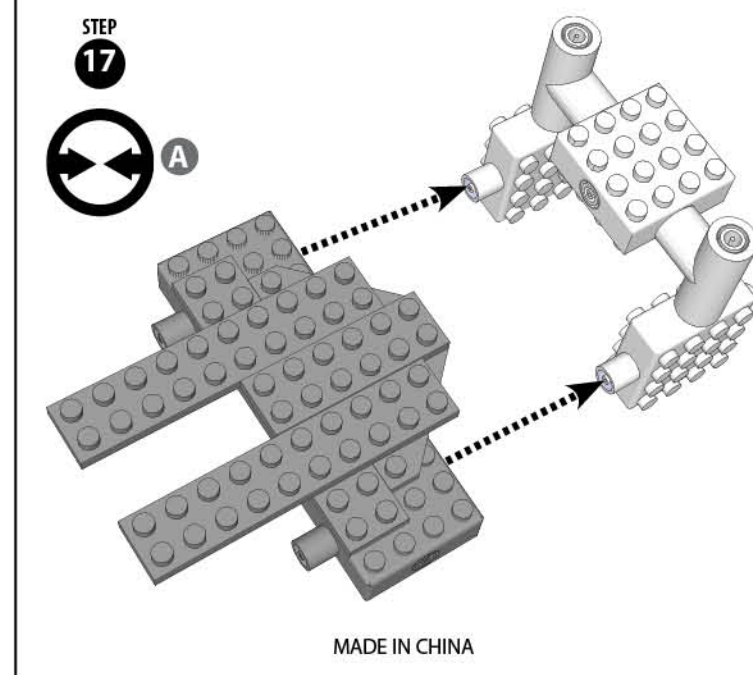
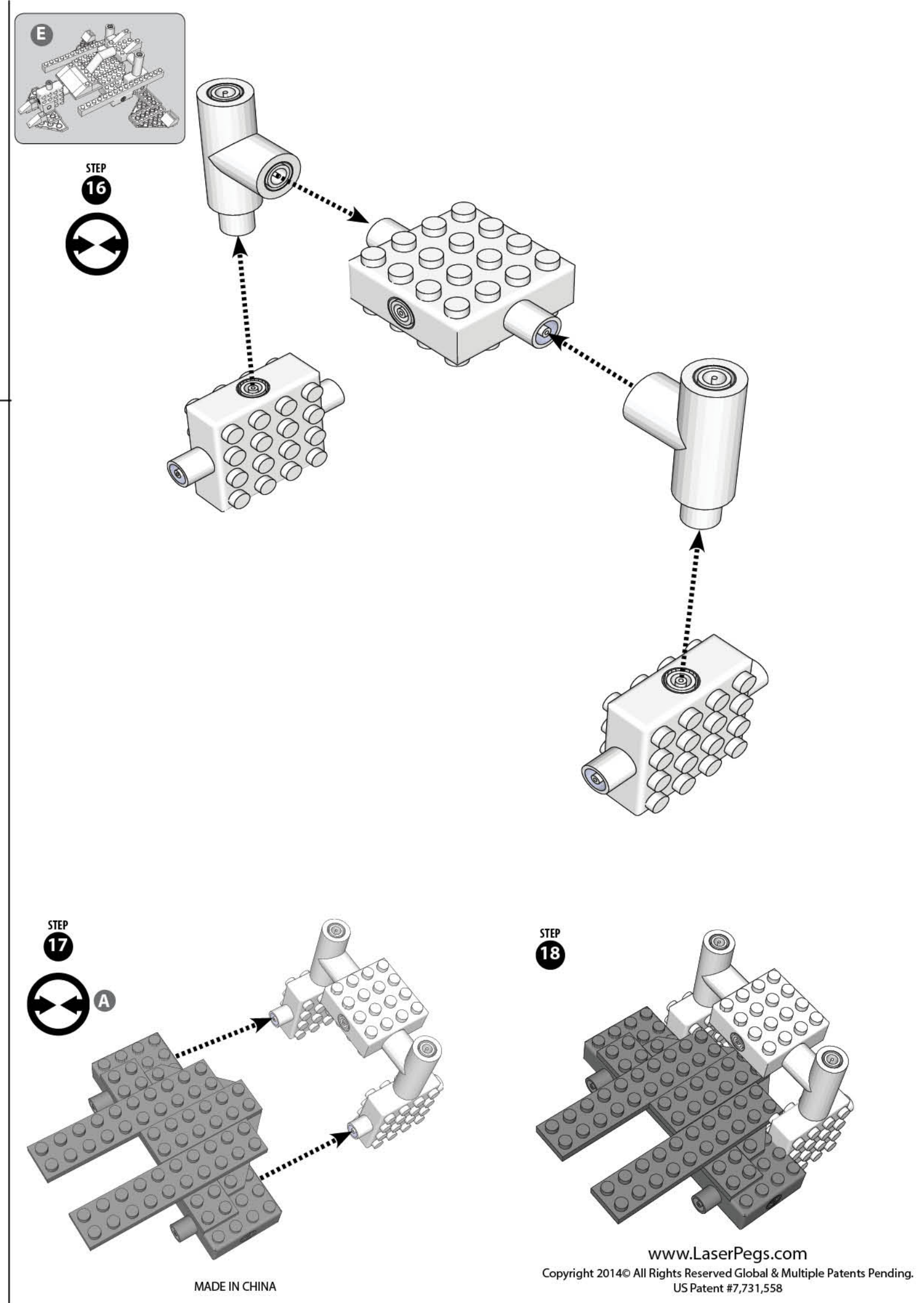
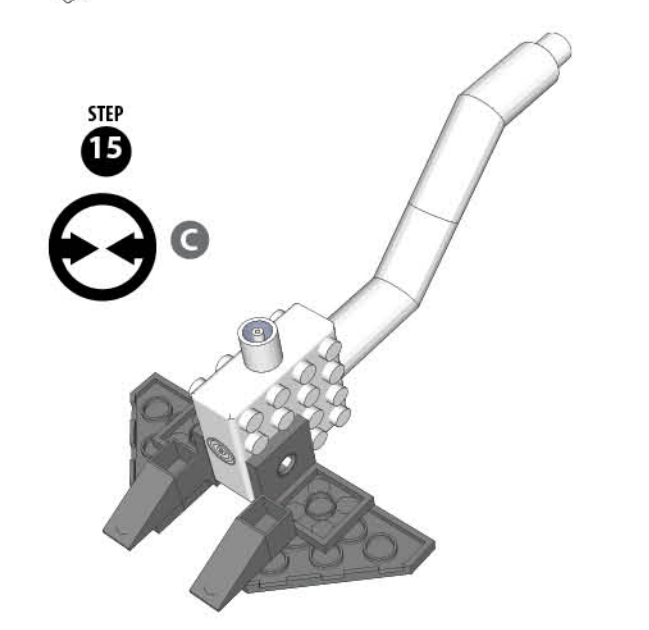
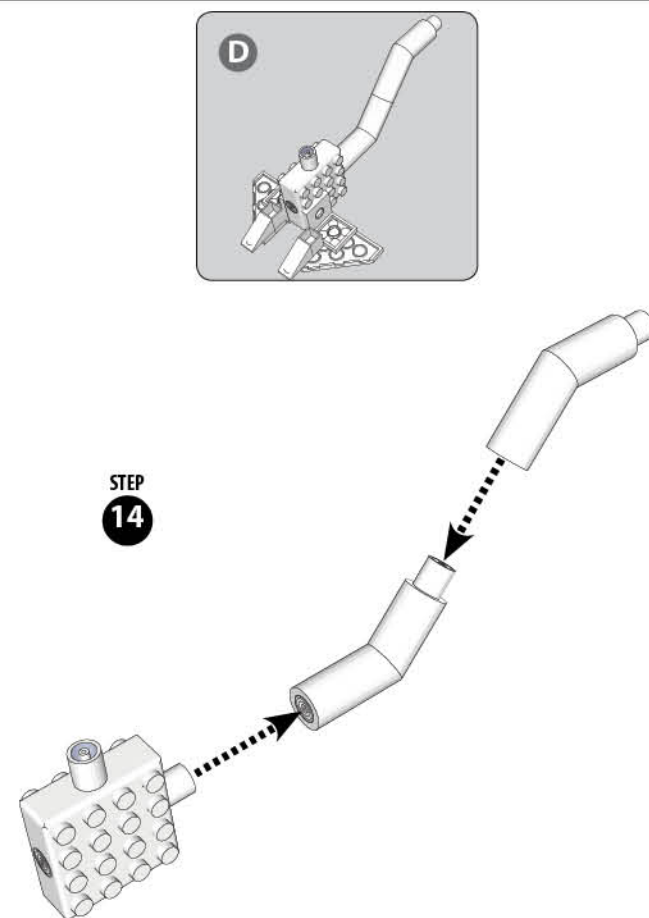
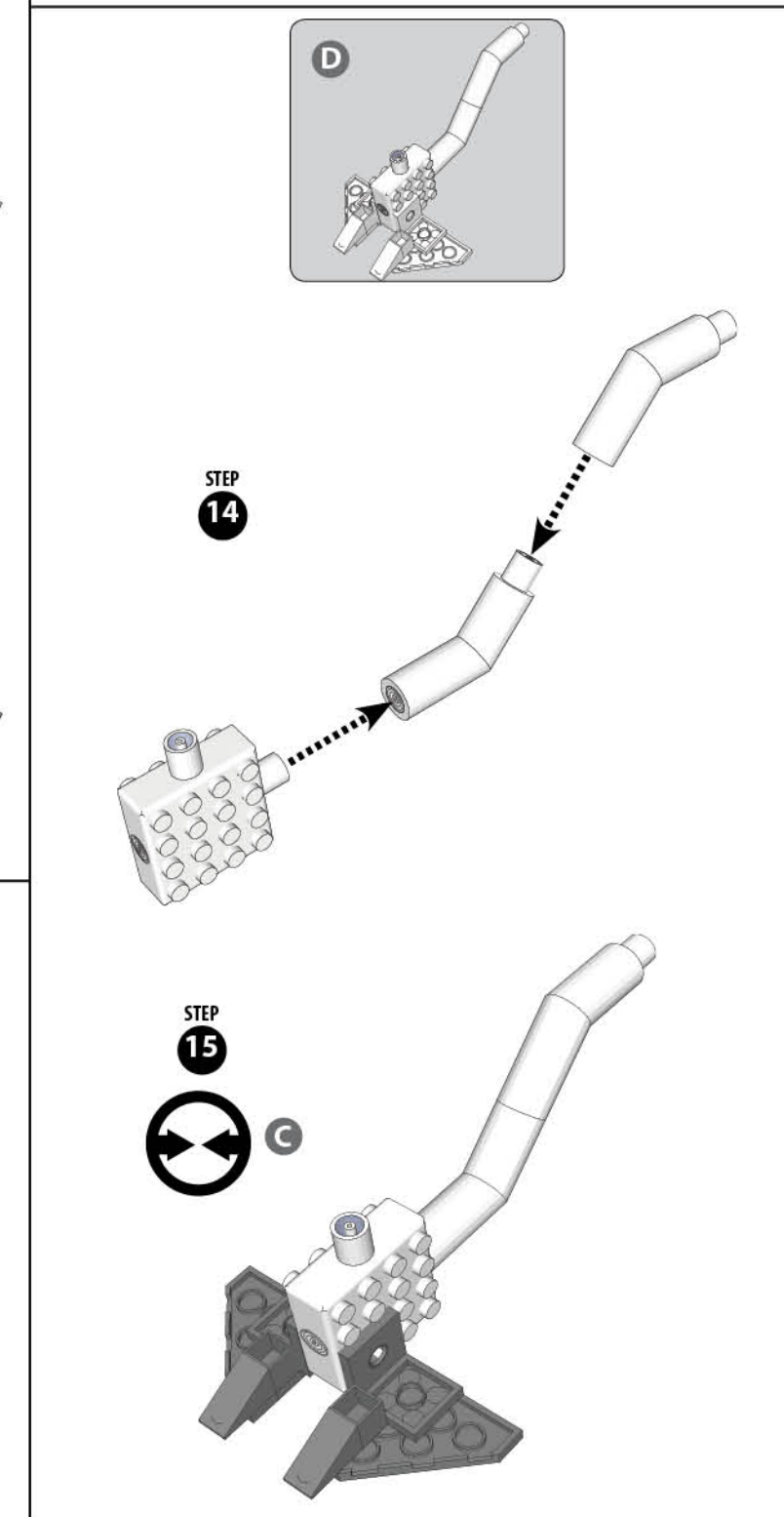
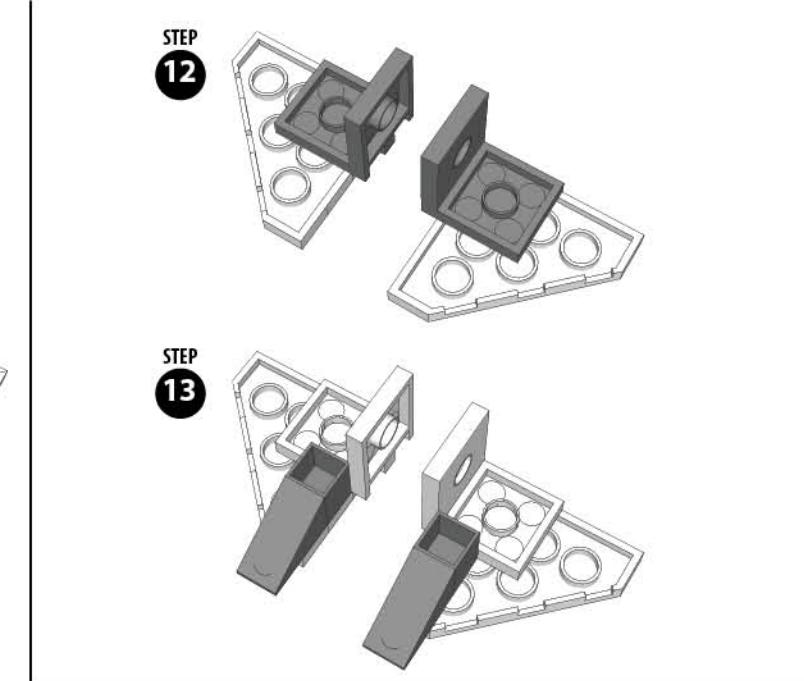
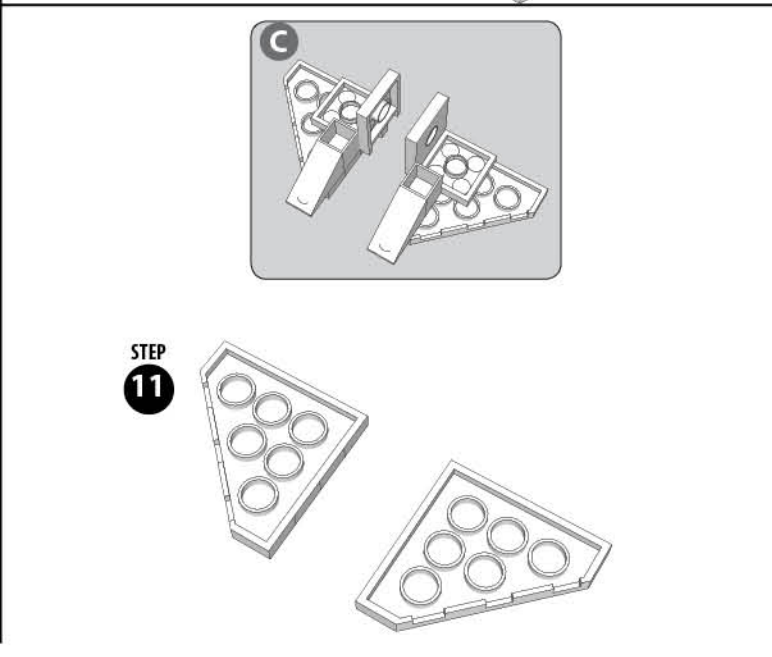
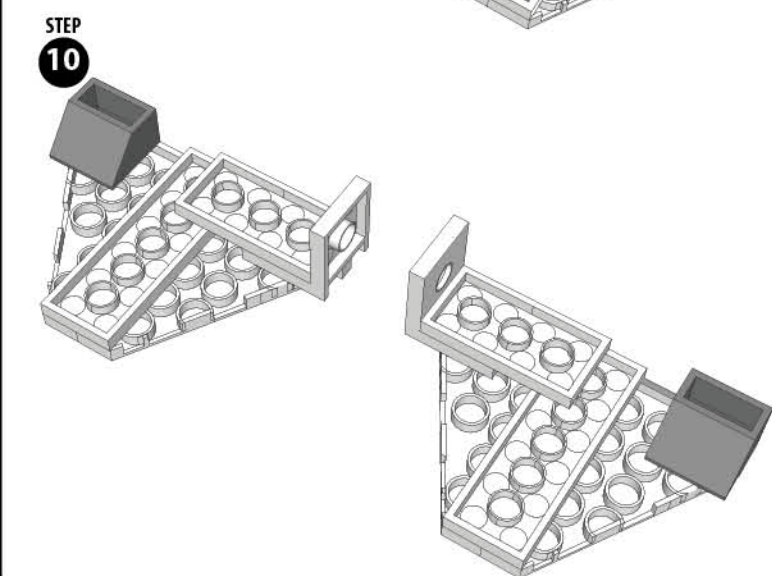
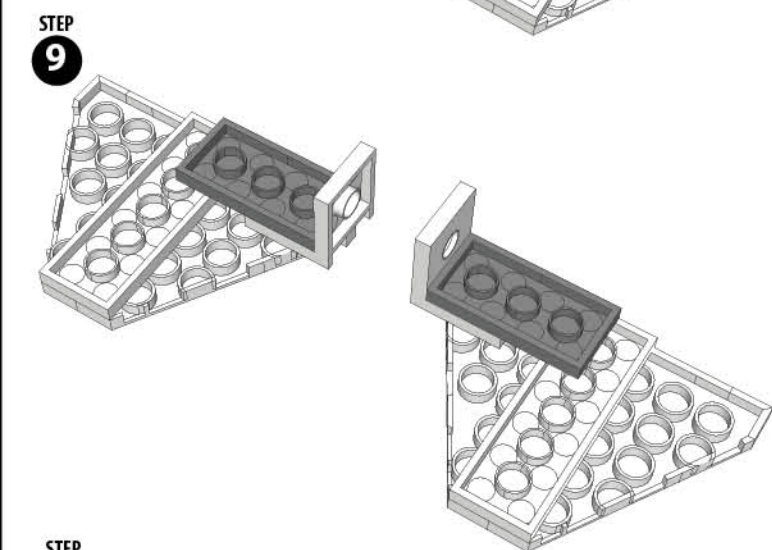
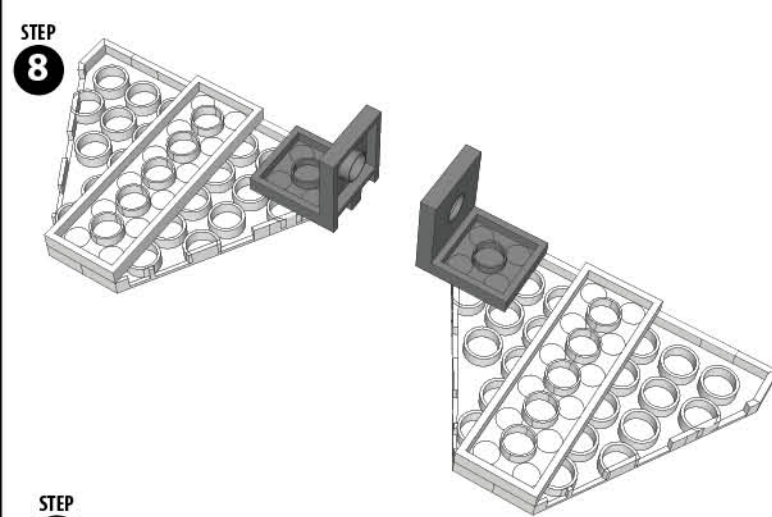
Sound Activated
Triangle Power Base

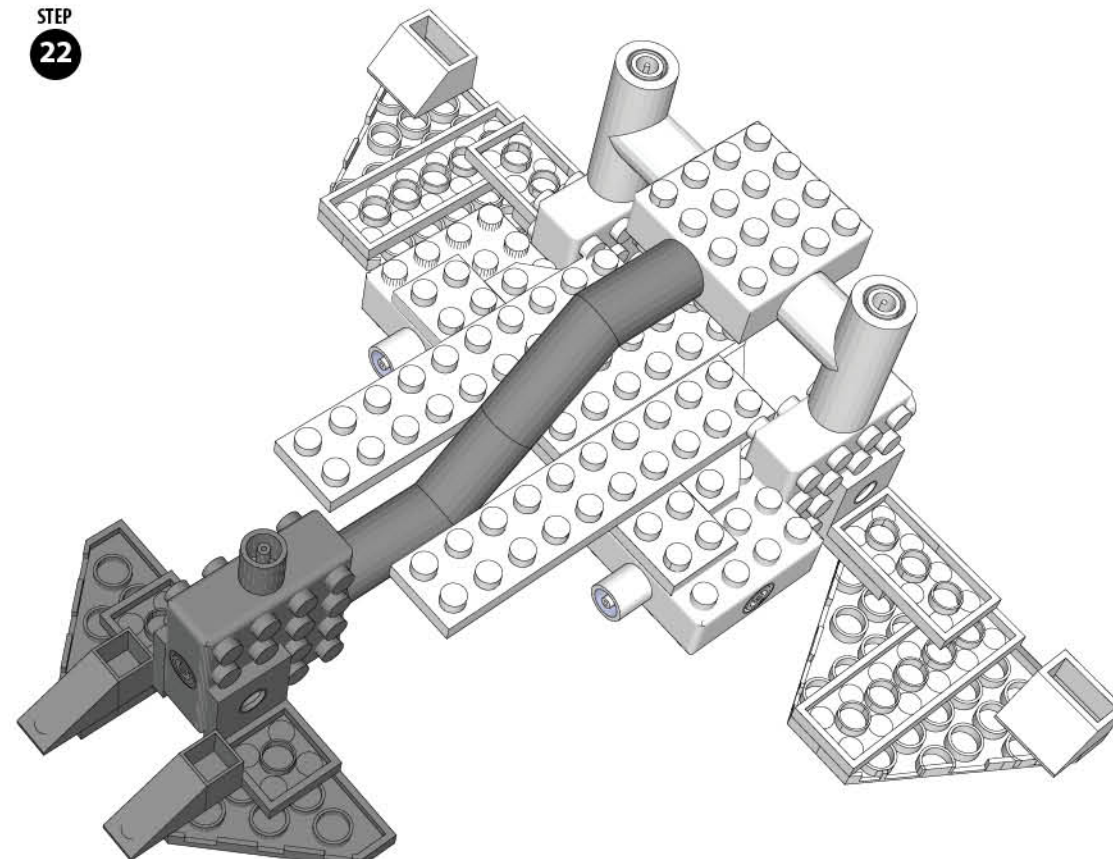
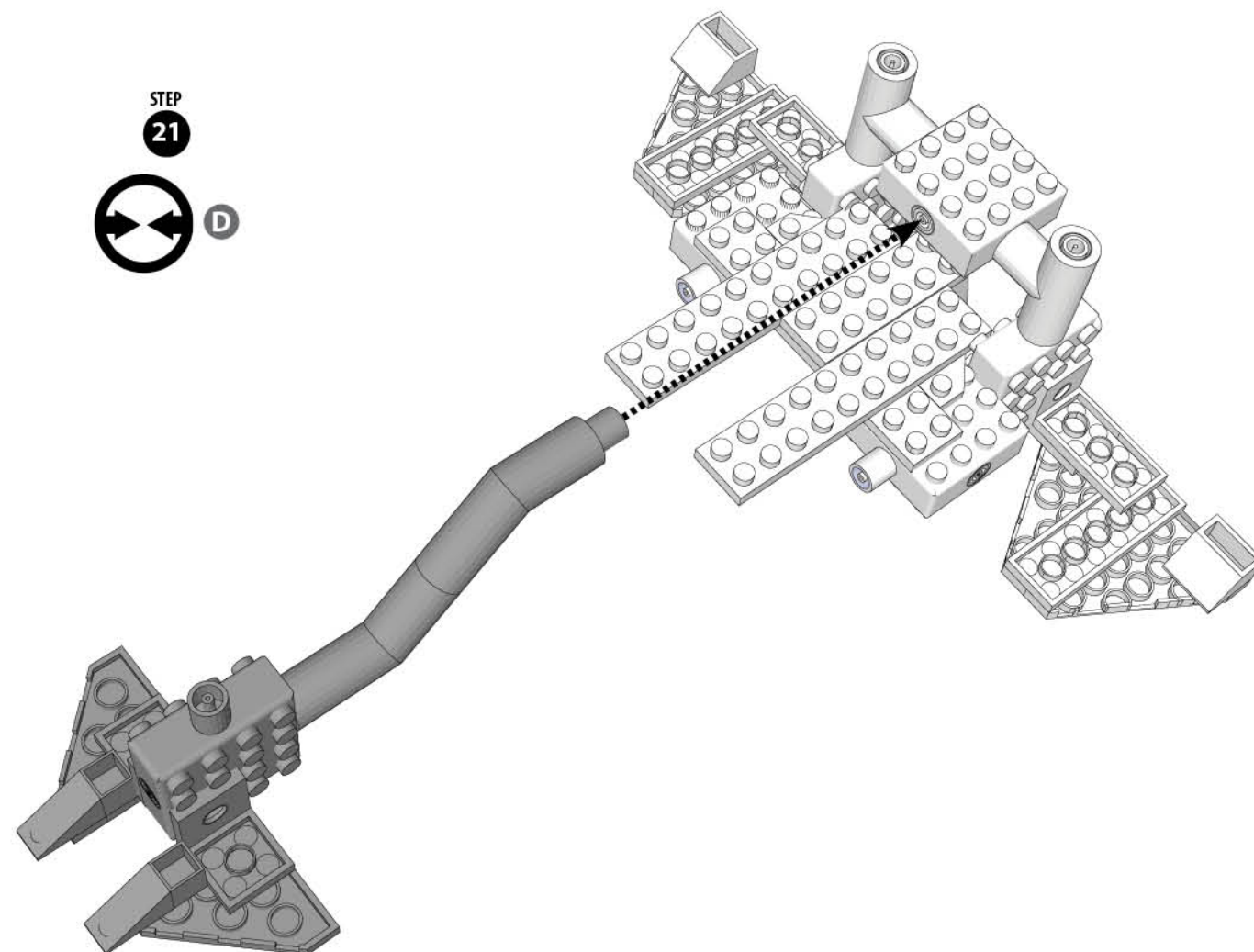
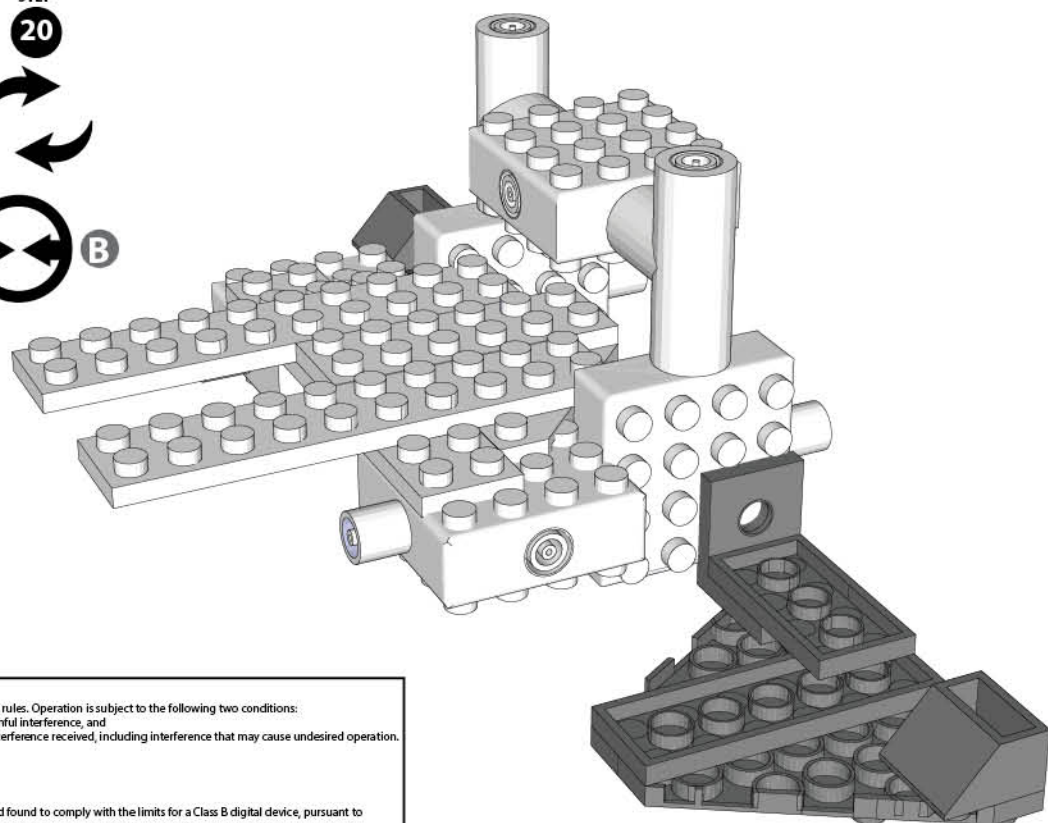
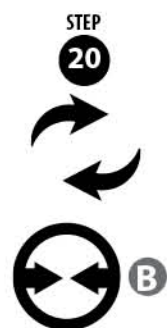
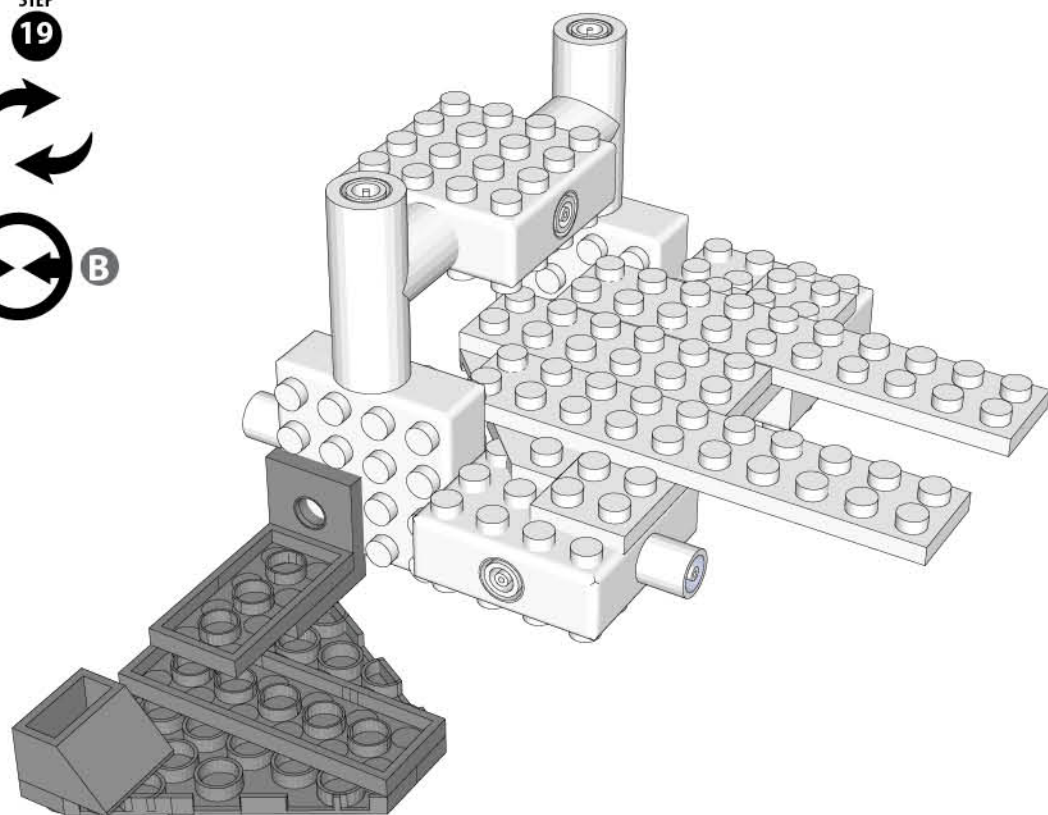
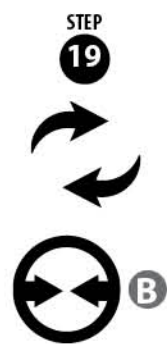


Laser Pegs®
Peg Cord

Construction Parts List







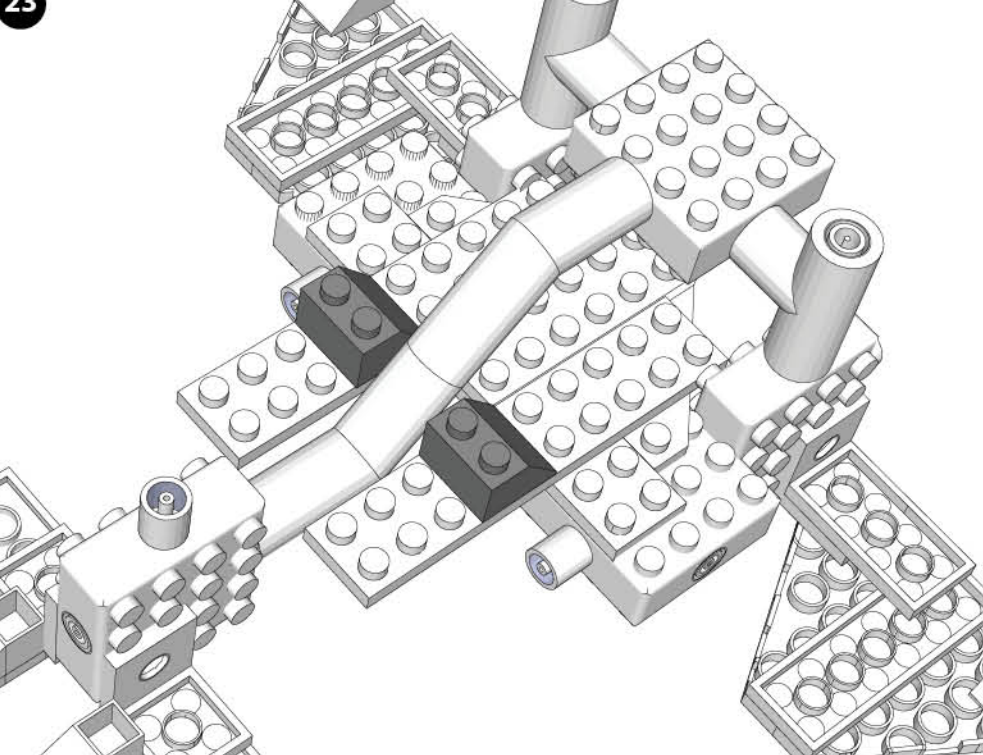
FCC Notice:
This device complies with Part 15 of the FCC rules. Operation is subject to the following two conditions:
1) This device may not cause harmful interference, and
2) This device must accept any interference received, including interference that may cause undesired operation.

CAN ICES-3 (B) / NMB-3 (B)

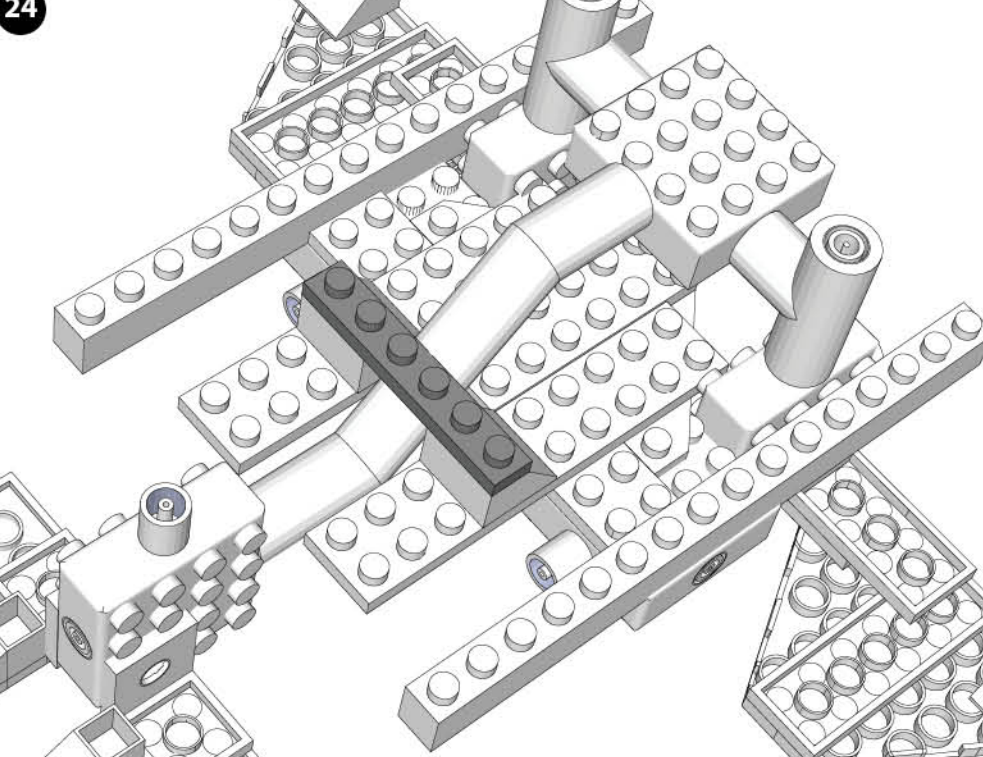
NOTE: This equipment has been tested and found to comply with the limits for a Class B digital device, pursuant to Part 15 of the FCC Rules. These limits are designed to provide reasonable protection against harmful interference in a residential installation. This equipment generates, uses and can radiate radio frequency energy and, if not installed and used in accordance with the instructions, may cause harmful interference to radio communications. However, there is no guarantee that interference will not occur in a particular installation. If this equipment does cause harmful interference to radio or television reception, which can be determined by turning the equipment off and on, the user is encouraged to try to correct the interference by one or more of the following measures:

- Reorient or relocate the receiving antenna.
- Increase the separation between the equipment and receiver.
- Consult the dealer or an experienced radio/TV technician for help.

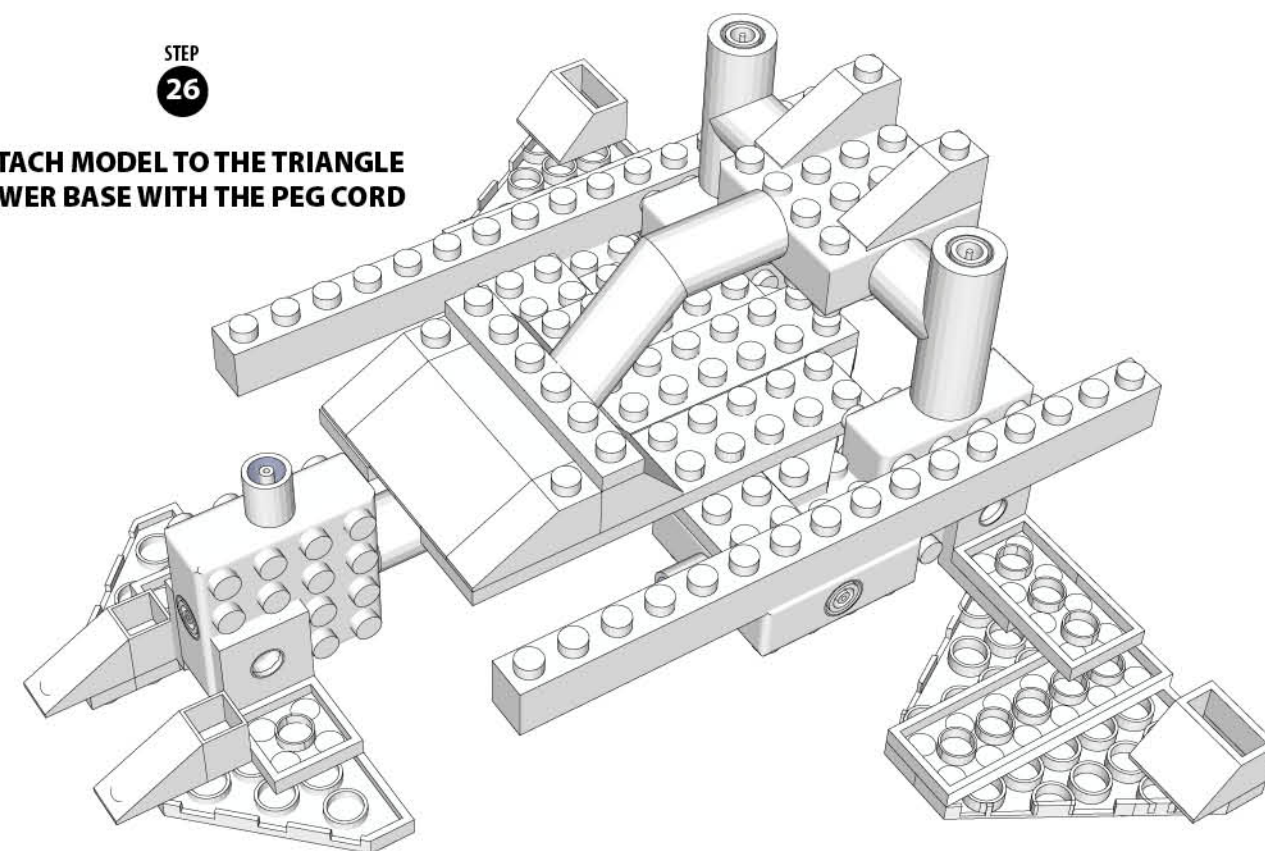
STEP
23



STEP
24

[illegible]

**ATTACH MODEL TO THE TRIANGLE
POWER BASE WITH THE PEG CORD**



MADE IN CHINA
www.LaserPegs.com
Copyright 2014© All Rights Reserved Global & Multiple Patents Pending.
US Patent #7,731,558