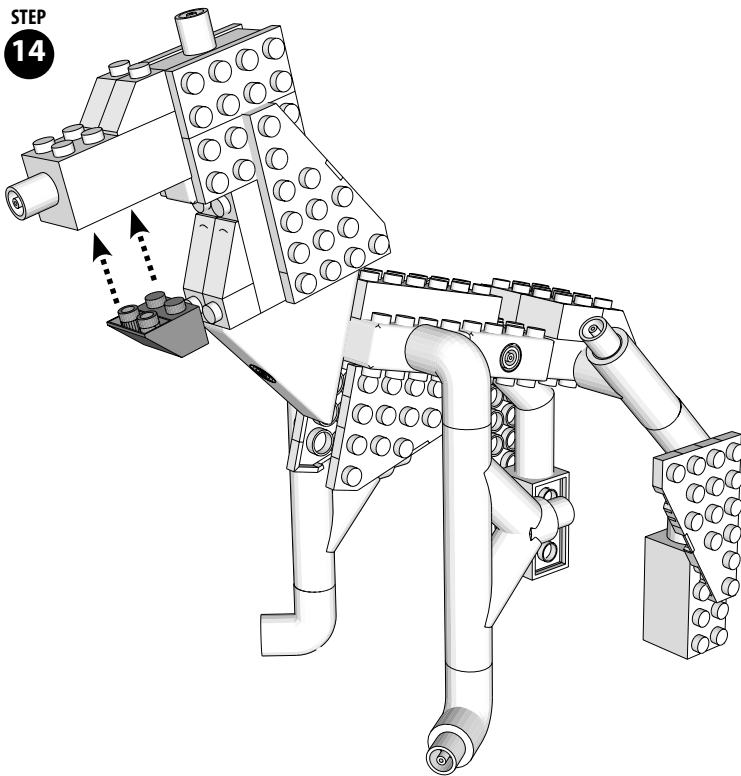
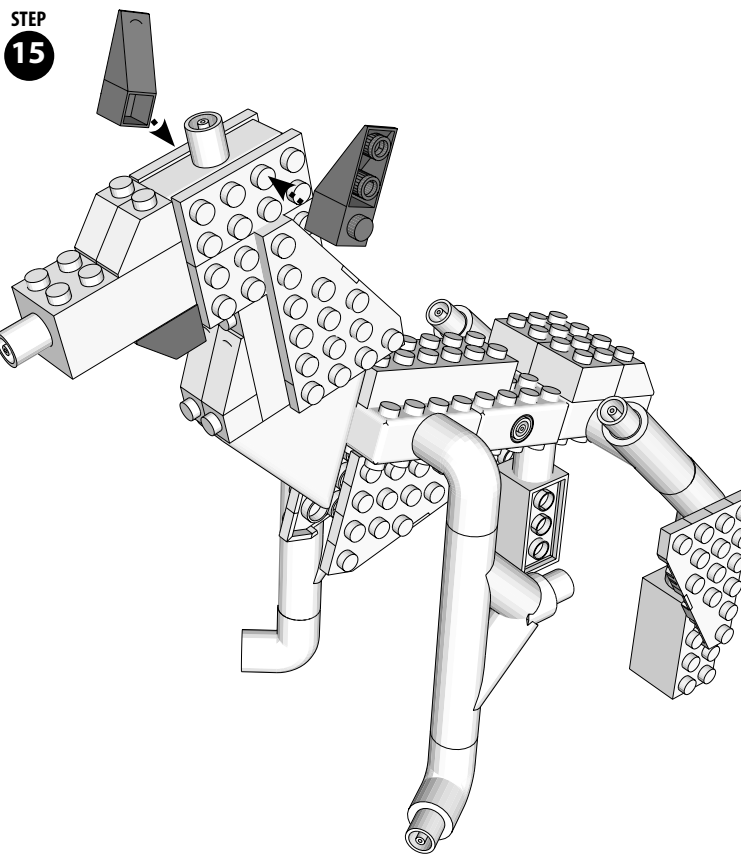


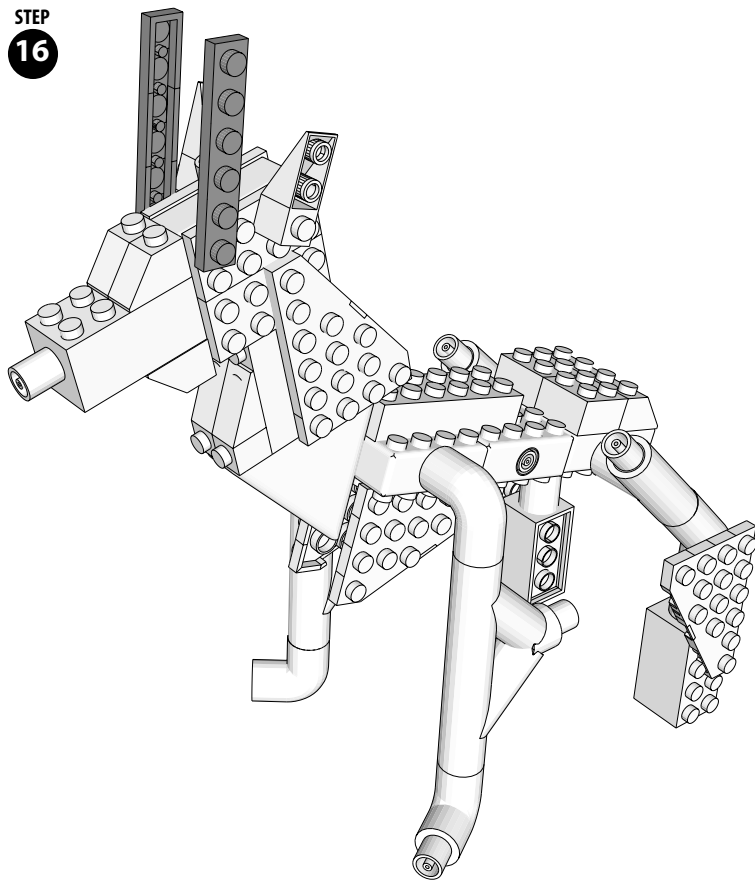
STEP  
14



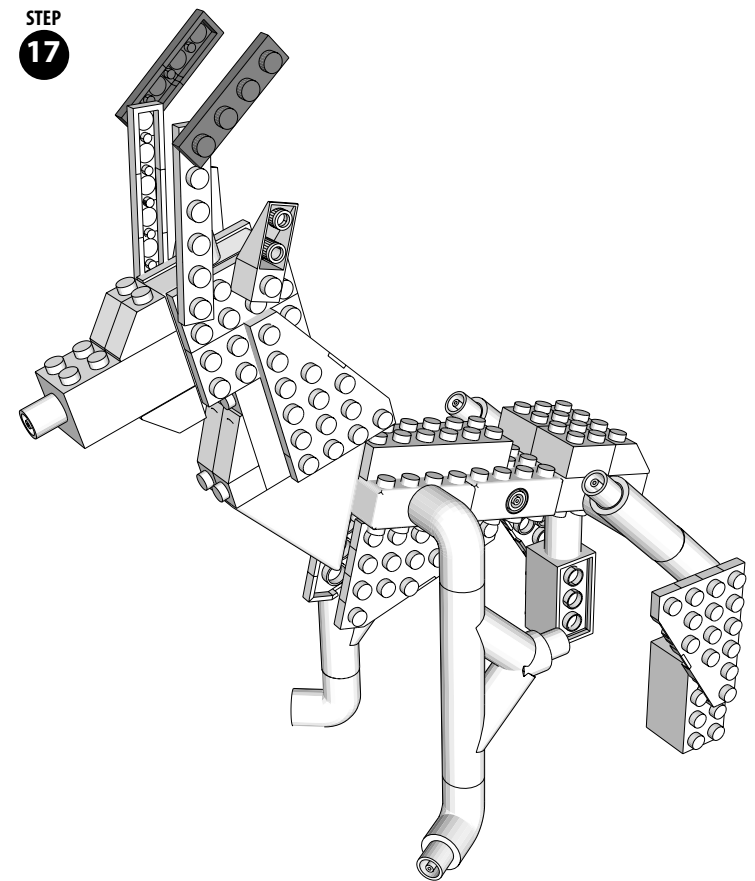
STEP  
15



STEP  
16



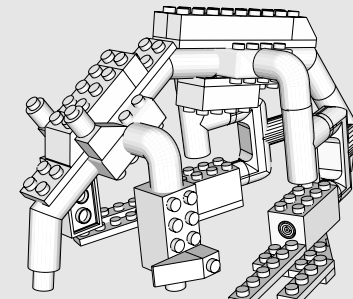
STEP  
17



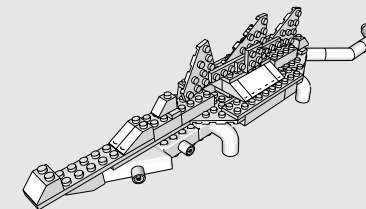
**ATTACH THE MODEL TO THE TRIANGLE  
POWER BASE WITH THE PEG CORD**

## MODEL INSTRUCTIONS

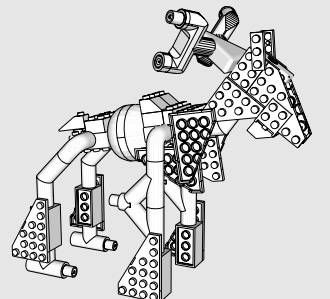
All additional model instructions can  
be downloaded at [www.LaserPegs.com](http://www.LaserPegs.com)



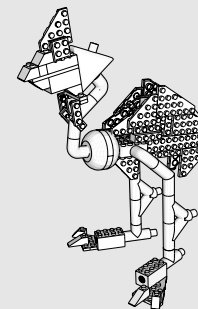
**AARDVARK**



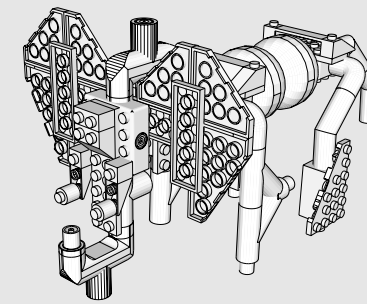
**ASIAN PACIFIC CROCODILE**



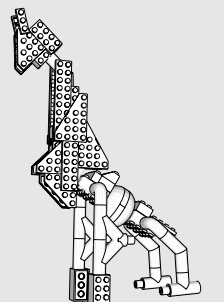
**CARIBOU**



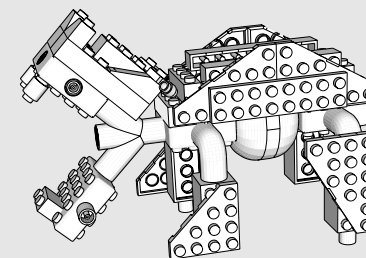
**CASSOWARY**



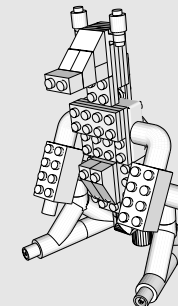
**ELEPHANT**



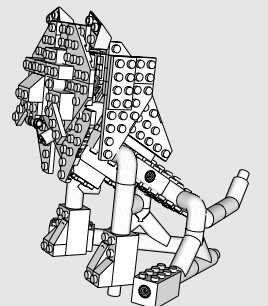
**GIRAFFE**



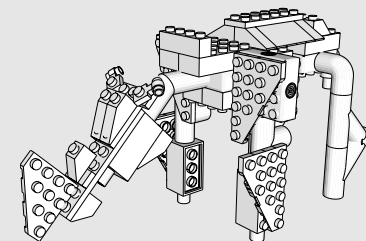
**HIPPOPOTAMUS**



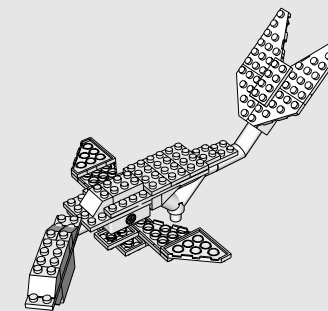
**KANGAROO**



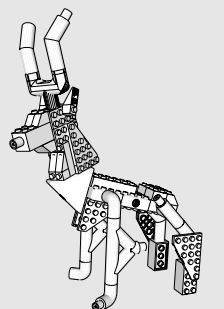
**LION**



**RHINOCEROS**



**SEAL**



**THOMSON'S GAZELLE**



National Geographic's net proceeds support vital exploration, conservation, research, and education programs.

Laser Pegs® CARES  
Questions? Comments?  
For additional compliance info:  
1-866-432-3735  
Contact: [Support@LaserPegs.com](mailto:Support@LaserPegs.com)

MADE IN CHINA  
[www.LaserPegs.com](http://www.LaserPegs.com)  
Copyright 2014 © All Rights Reserved Global & Multiple Patents Pending.  
US Patent #7,731,558